

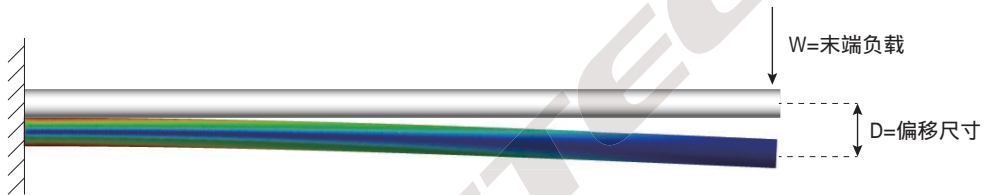
管材棒材

UYATECH管材棒材包含尺寸标准，见下方选型图表：

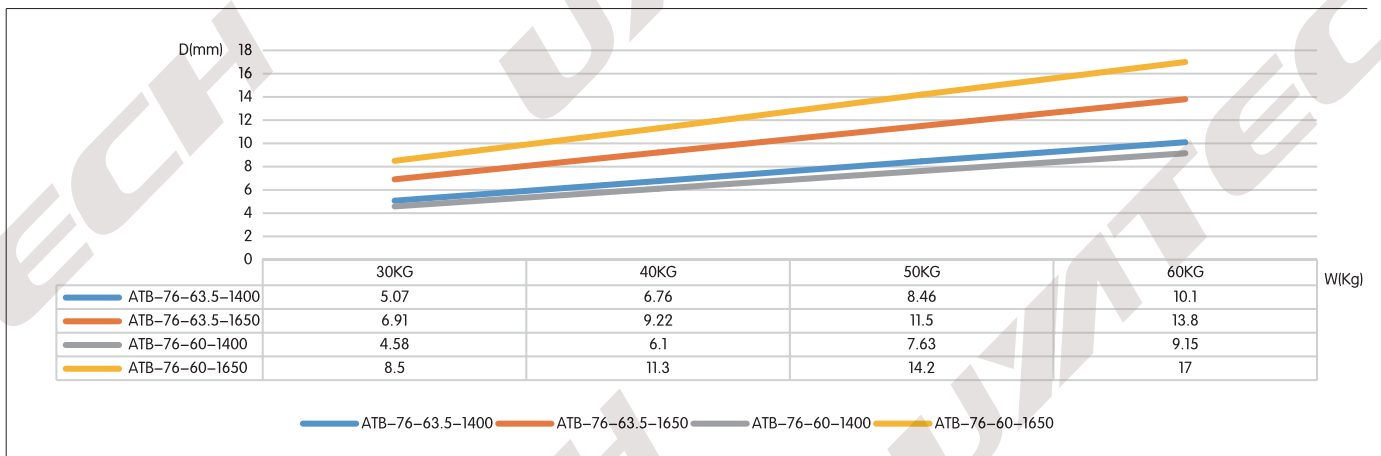
ALT	-76	-5	-L	备注
ALR	25	3	50-2000	铝管类
	30	4	50-2000	
	38	4	300-2000	
	40	3	300-2000	
	40	5	300-2000	
	40-3X	3	300-2000	
	60-5X	5	300-2000	
	60	5	300-2000	
ALR	76	5	300-2000	铝管类
	76	8	300-2000	
ALR	25	-	50-2000	铝棒类
	25	2	50-2000	
STT	28	2.5	50-2000	钢管类
	30	2.5	50-2000	
ATB	76-60	-	1400	锥型铝管类
	76-60	-	1650	
	76-63.5	-	1400	
	76-63.5	-	1650	

- 精密模具制造工艺，保证每批次的公差
- 铝管材料6061-T6，铝挤出型材
- 钢管材料20#，热压无缝钢管
- 长期备有足量库存
- 铝管表面处理可选阳极化或硬质氧化
- 钢管表面处理可选发蓝或镀蓝白锌

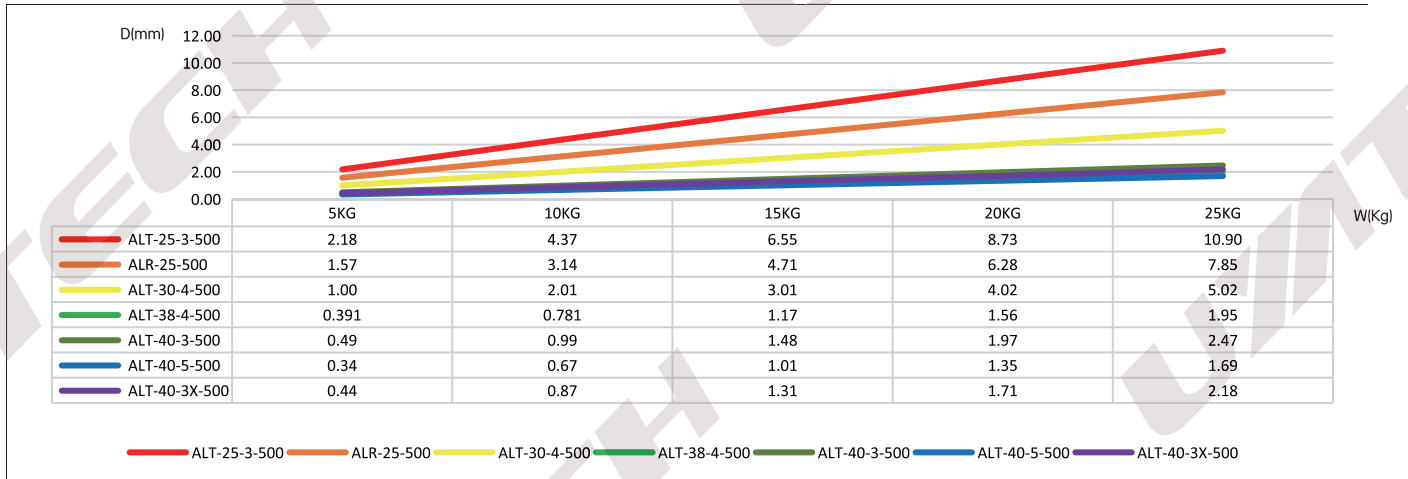
挠度分析



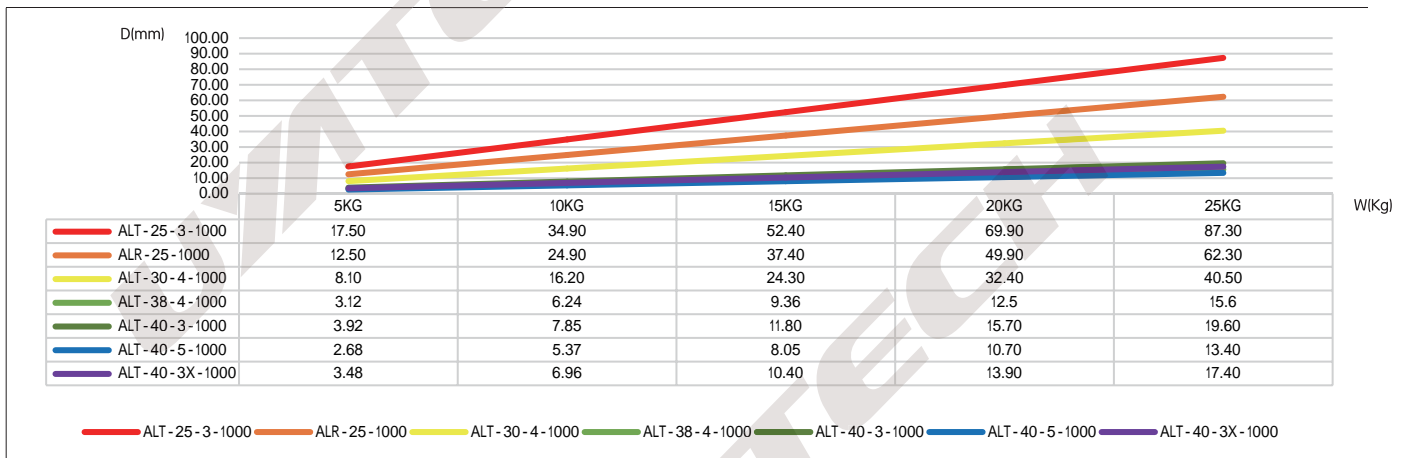
外径76锥型铝管挠度分析，长度1400mm/1650mm



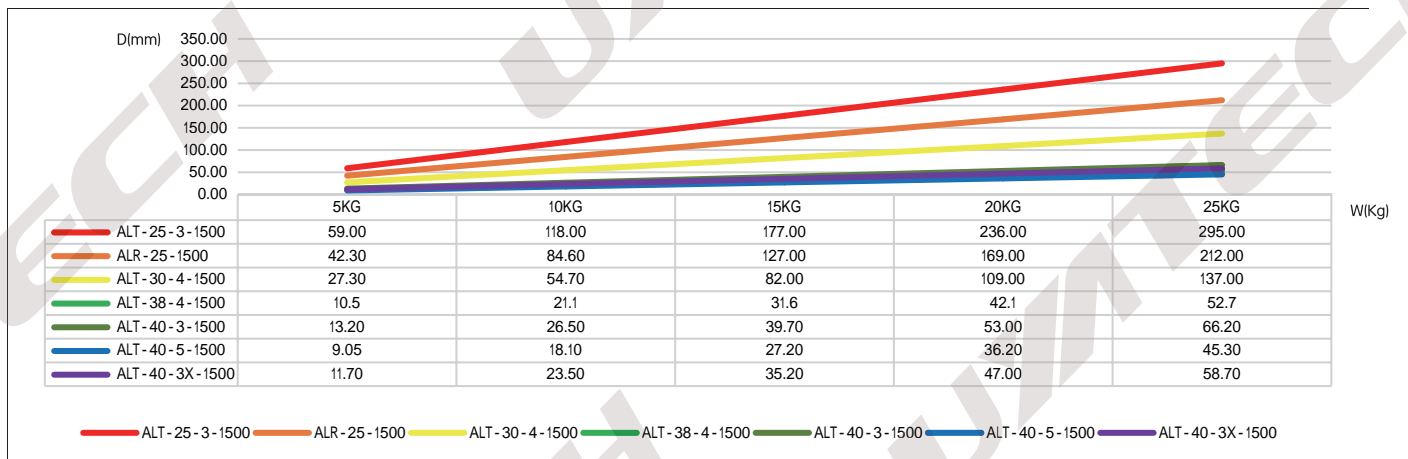
外径25/30/38/40铝管材挠度分析，长度500mm



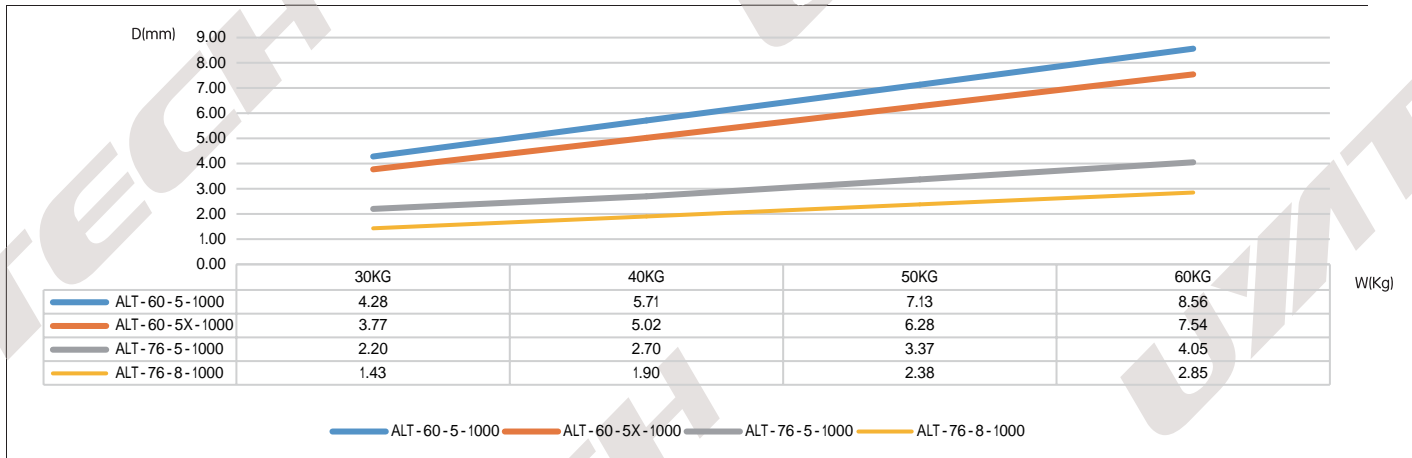
外径25/30/38/40铝管材挠度分析，长度1000mm



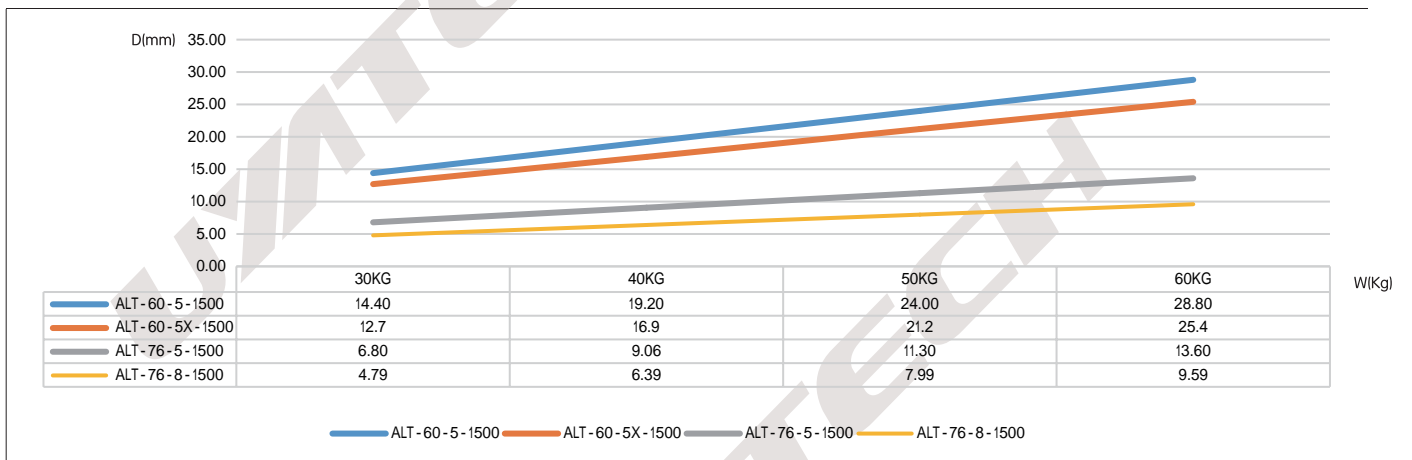
外径25/30/38/40铝管材挠度分析，长度1500mm



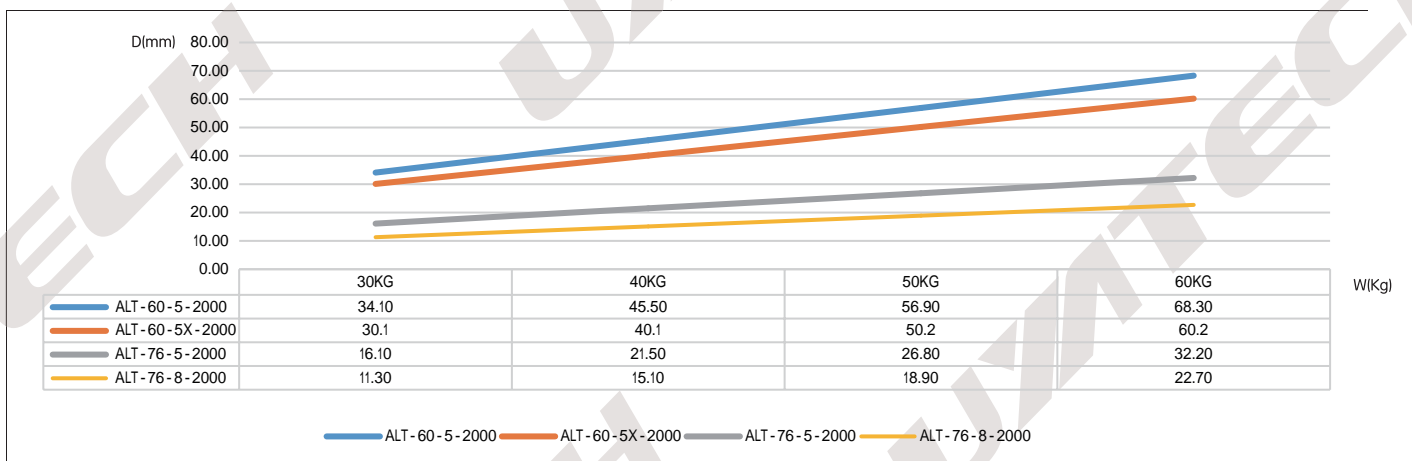
外径60/76铝管材挠度分析, 长度1000mm



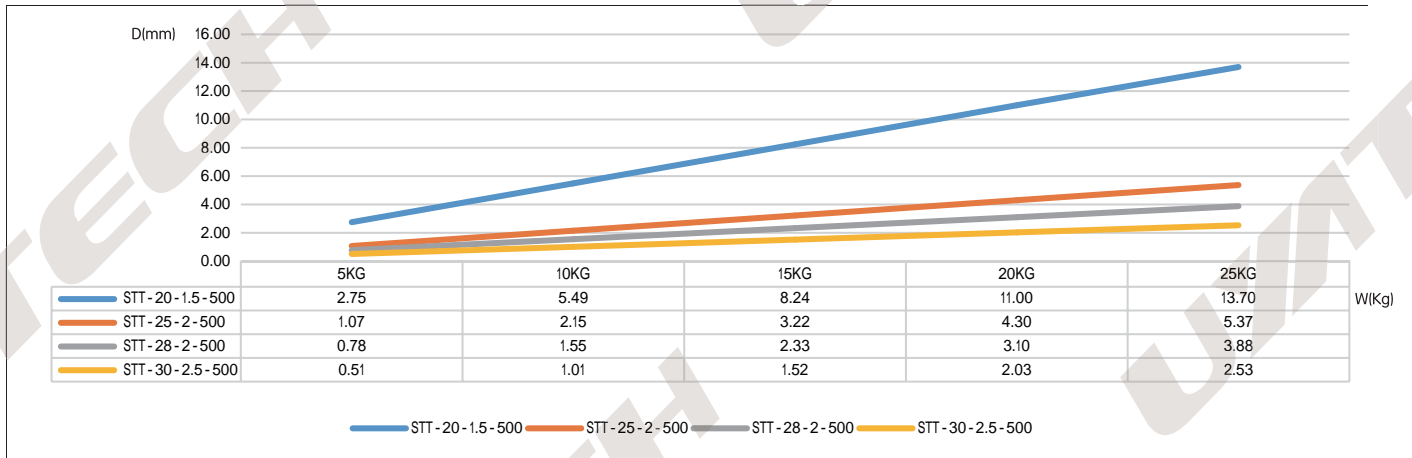
外径60/76铝管材挠度分析, 长度1500mm



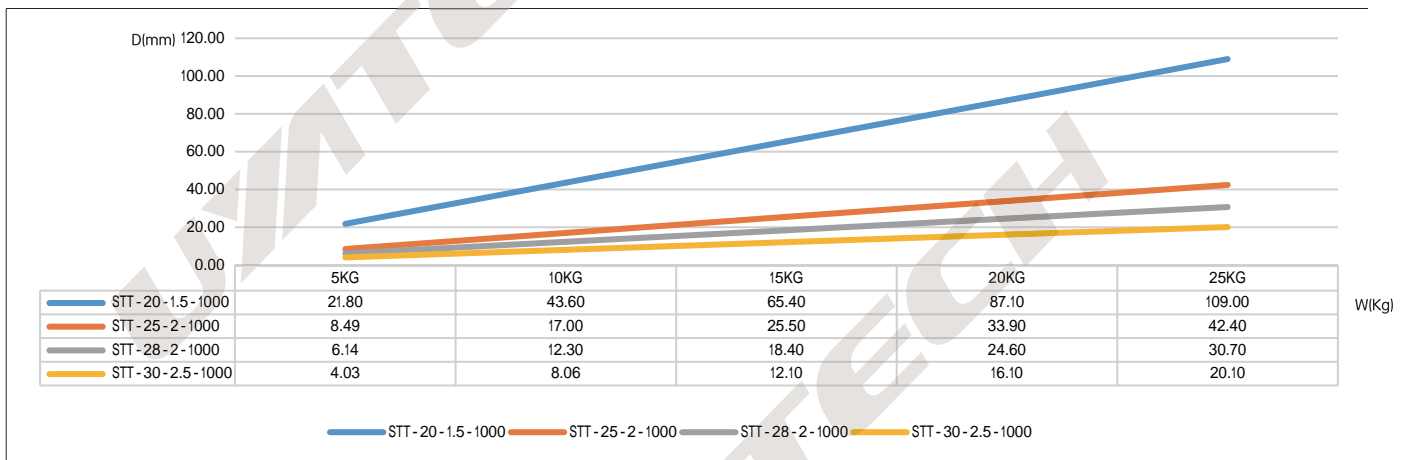
外径60/76铝管材挠度分析, 长度2000mm



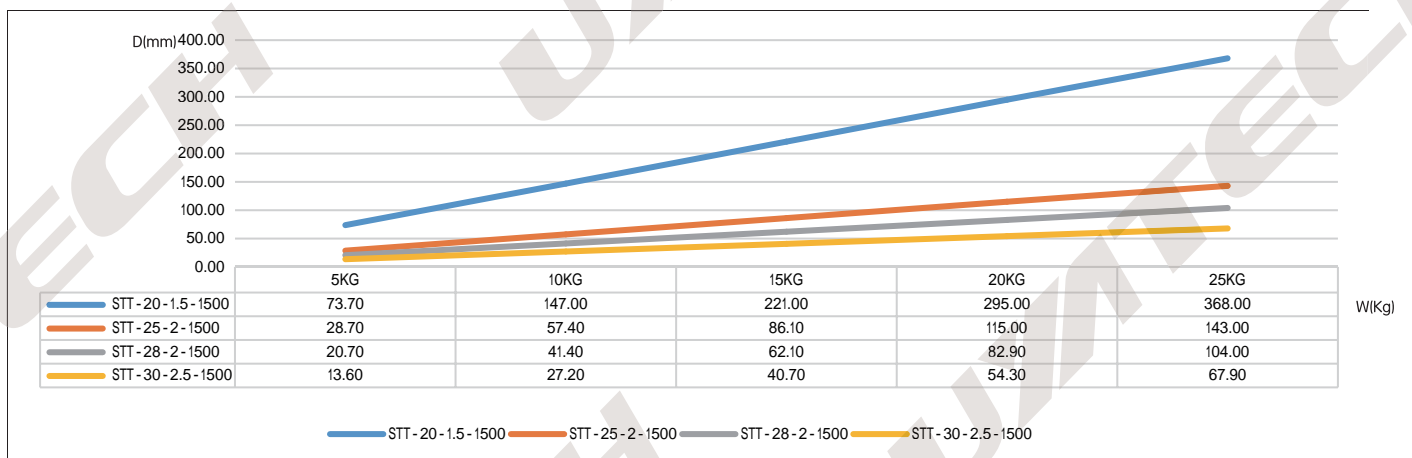
外径20/25/28/30钢管材挠度分析，长度500mm



外径20/25/28/30钢管材挠度分析，长度1000mm

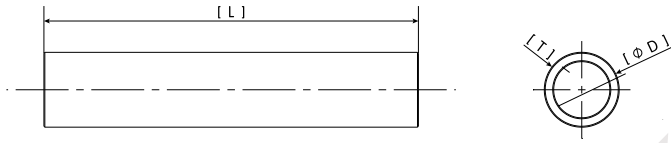


外径20/25/28/30钢管材挠度分析，长度1500mm



ALT | 铝管

外形尺寸

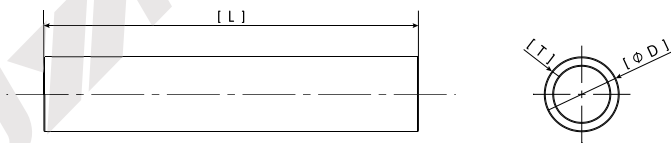


订购方式

产品型号	订购代码	型号说明	D	T	L
ALT-76-8-L	21538101	76铝管, 壁厚8	76	8	300-2000
ALT-76-5-L	21538102	76铝管, 壁厚5	76	5	300-2000
ALT-60-5-L	21538103	60铝管, 壁厚5	60	5	300-2000
ALT-40-5-L	21538105	40铝管, 壁厚5	40	5	300-2000
ALT-40-3-L	21538106	40铝管, 壁厚3	40	3	300-2000
ALT-38-4-L	21538107	38铝管, 壁厚4	38	4	300-2000
ALT-30-4-L	21538108	30铝管, 壁厚4	30	4	50-2000
ALT-25-3-L	21538109	25铝管, 壁厚3	25	3	50-2000

STT | 钢管

外形尺寸



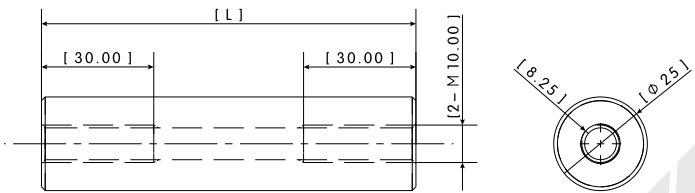
订购方式

产品型号	订购代码	型号说明	D	T	L
STT-30-2.5-L	74818101	30钢管, 壁厚2.5	30	2.5	50-2000
STT-28-2-L	74818102	28钢管, 壁厚2	28	2	50-2000
STT-25-2-L	74818103	25钢管, 壁厚2	25	2	50-2000
STT-20-1.5-L	74818104	20钢管, 壁厚1.5	20	1.5	50-2000

ALR-25 | 25铝棒



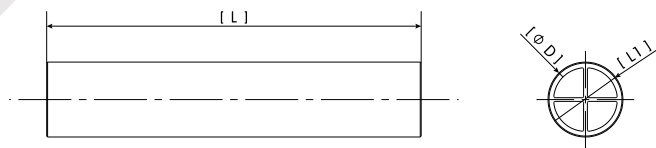
外形尺寸



ALT-40/60-X | 十字筋铝管



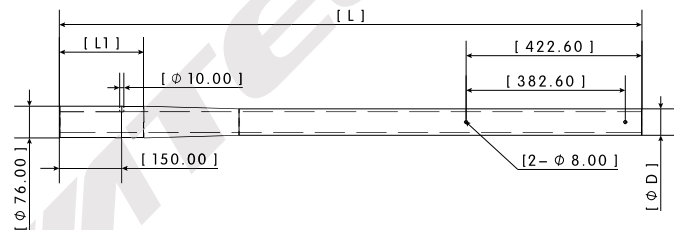
外形尺寸



ATB | 锥型铝管



外形尺寸



订购方式

产品型号	订购代码	型号说明	L	L1	D	重量
ALR-25-L	21537305	25铝棒 (L可定制)	50-1000	-	-	-
ALT-40-3X-L	21538140	40十字筋铝管 (L可定制)	300-2000	40	3	-
ALT-60-5X-L	21538141	60十字筋铝管 (L可定制)	300-2000	60	5	-
ATB-76-63.5-1400	21812201	锥形铝管	1400	203.2	63.5	5.72
ATB-76-63.5-1650	21812202	锥形铝管	1650	453.2	63.5	7.47
ATB-76-60-1400	21812203	锥形铝管	1400	203.2	60.0	4.72
ATB-76-60-1650	21812204	锥形铝管	1650	453.2	60.0	6.47