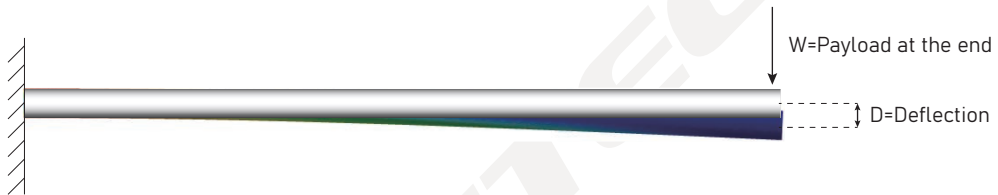


Tubes/Rods

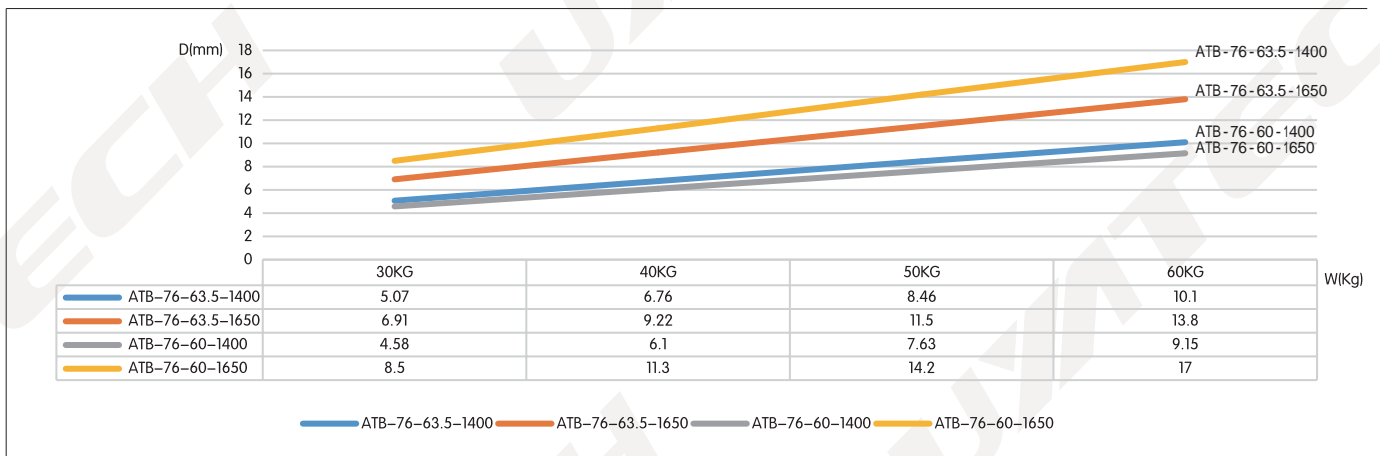
ALT	-76	-5	-L	Description
ALT	25	3	50-2000	Aluminum Tube
	30	4	50-2000	
	38	4	300-2000	
	40	3	300-2000	
	40	5	300-2000	
	40-3X	3	300-2000	
	60-5X	5	300-2000	
	60	5	300-2000	
	76	5	300-2000	
ALR	76	8	300-2000	Aluminum Rod
	25	N/A	50-2000	
STT	25	2	50-2000	Steel Tube
	28	2.5	50-2000	
	30	2.5	50-2000	
ATB	76-60	N/A	1400	Tapered Boom
	76-60	N/A	1650	
	76-63.5	N/A	1400	
	76-63.5	N/A	1650	

- ✓ Precise moulding process
- ✓ Aluminum 6061T6 extrusion profile
- ✓ Steel 20#, seamless hot-forming tube
- ✓ Sufficient stock
- ✓ Aluminum Surface: Anodized with sand blasting
- ✓ Steel Surface: Blackening or Zinc galvanized

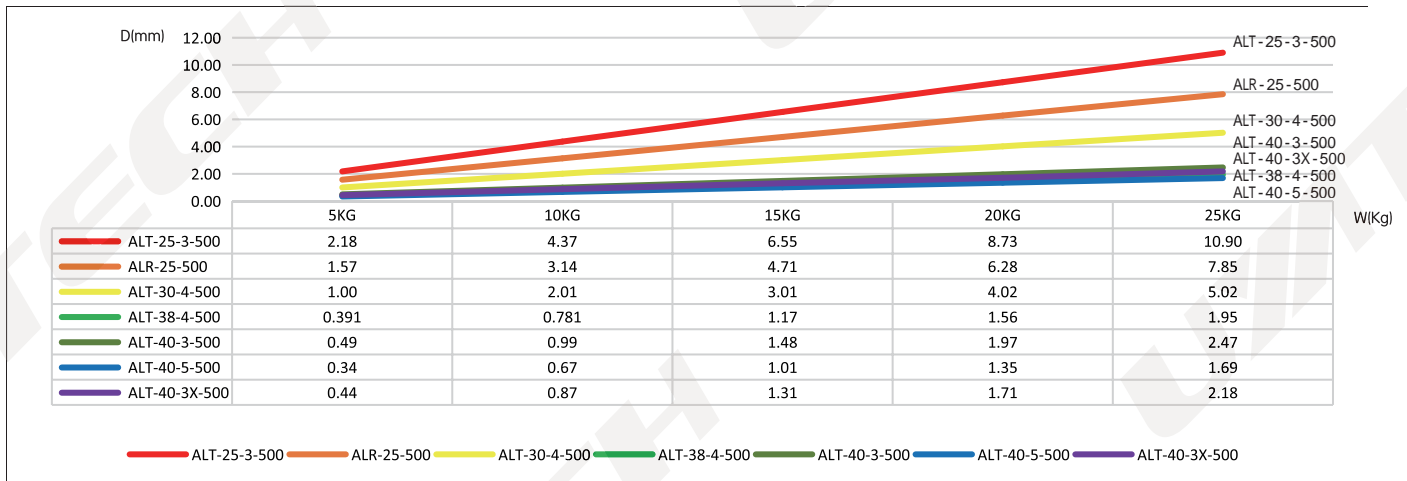
Deflection



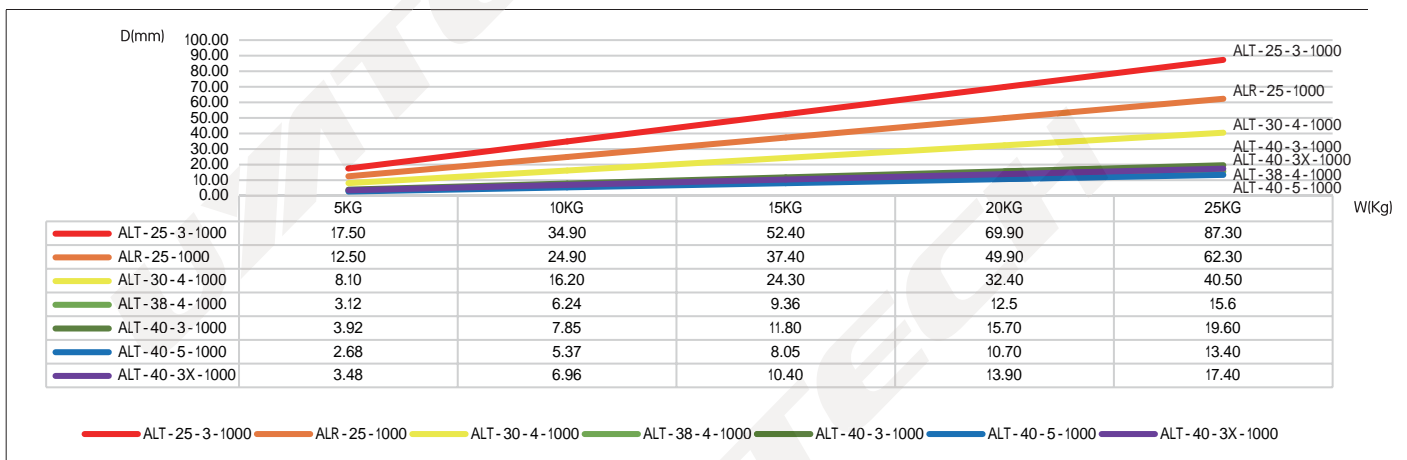
φ76 Tapered boom deflection chart



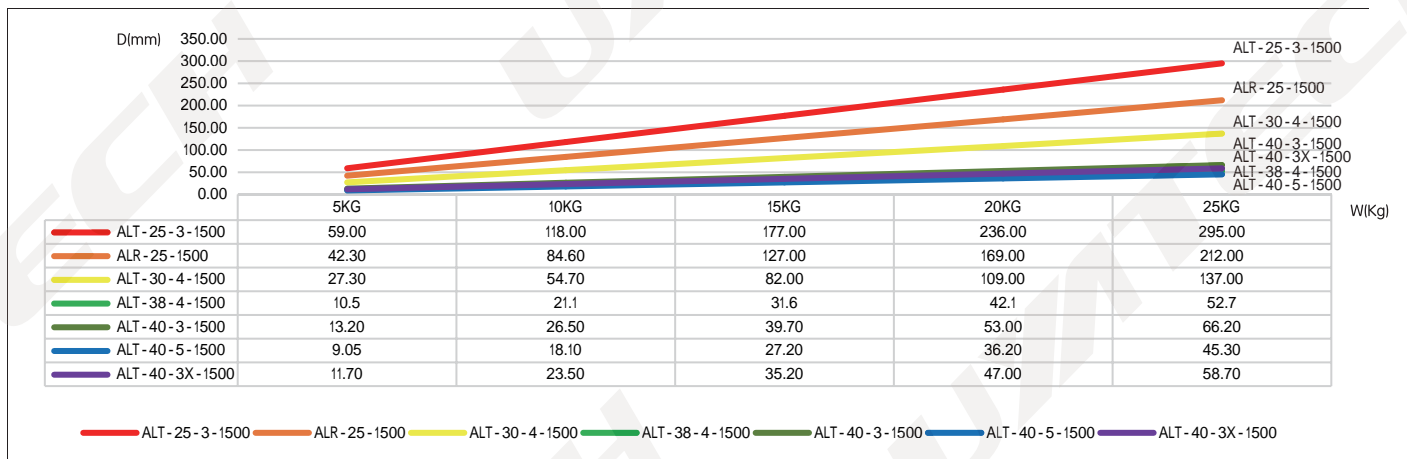
φ25/30/38/40 Aluminum tube deflection chart, L=500



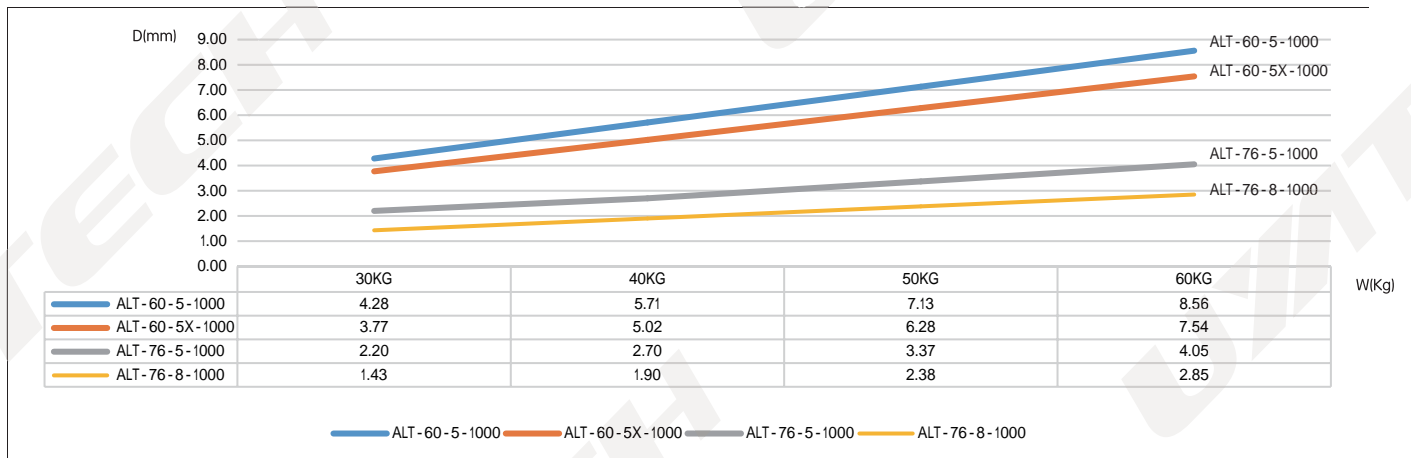
φ25/30/38/40 Aluminum tube deflection chart, L=1000



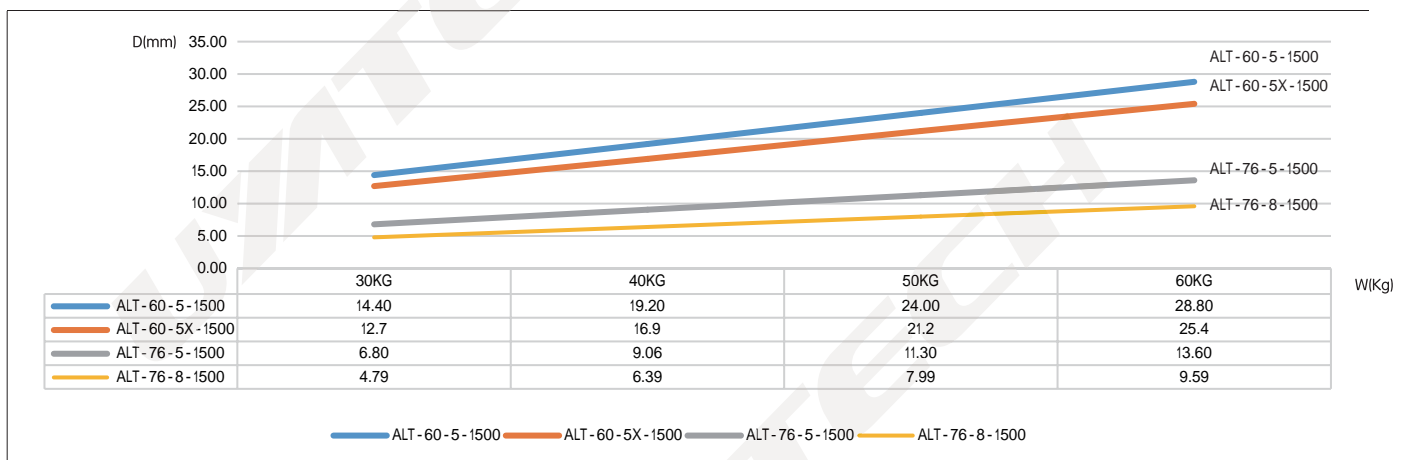
φ25/30/38/40 Aluminum tube deflection chart, L=1500



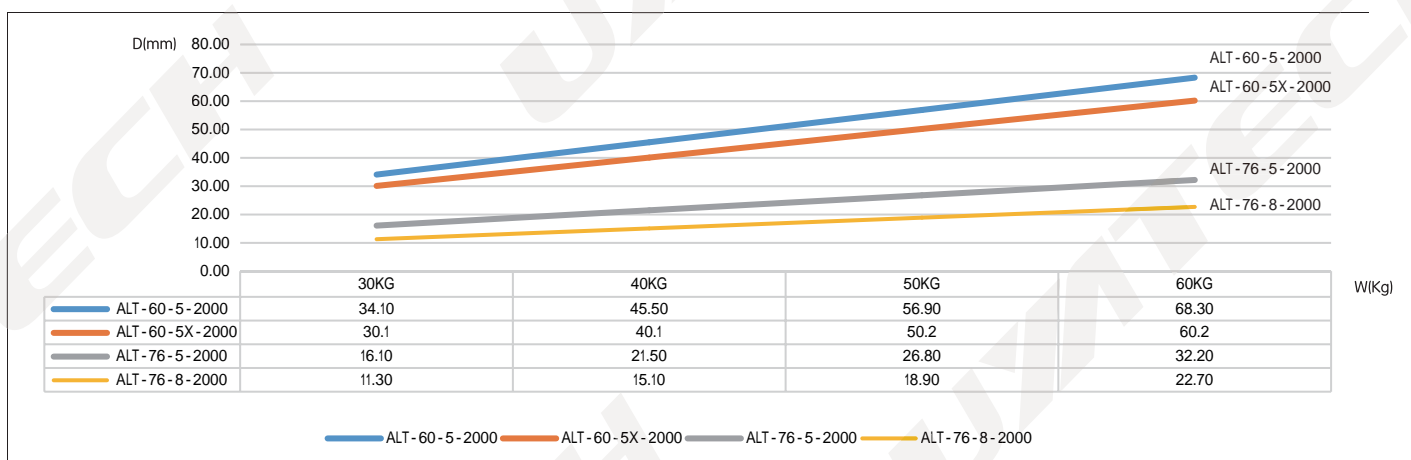
φ60/76 Aluminum tube deflection chart, L=1000



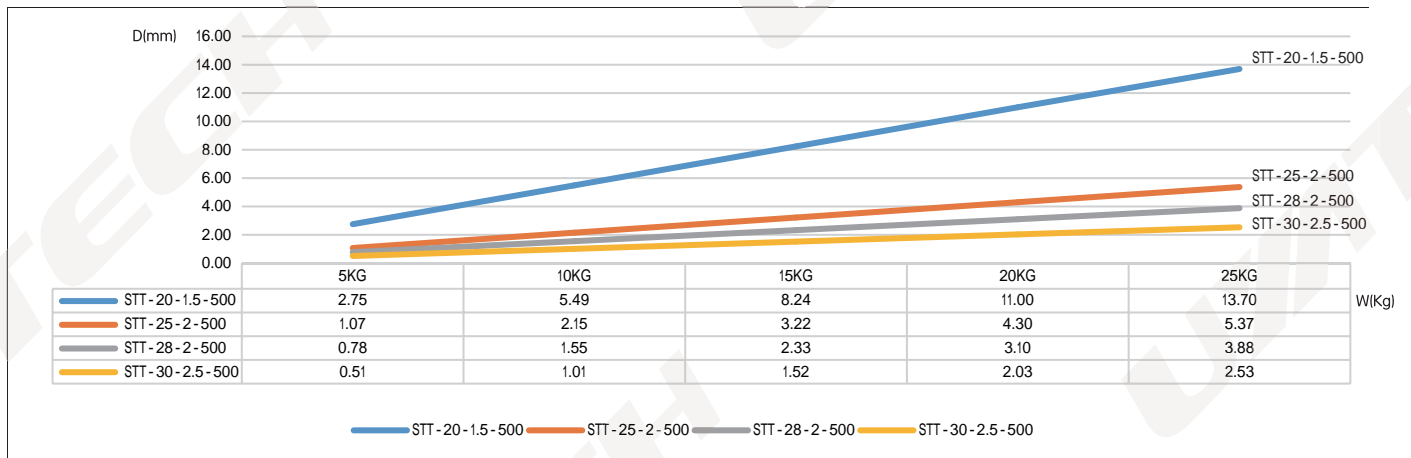
φ60/76 Aluminum tube deflection chart, L=1500



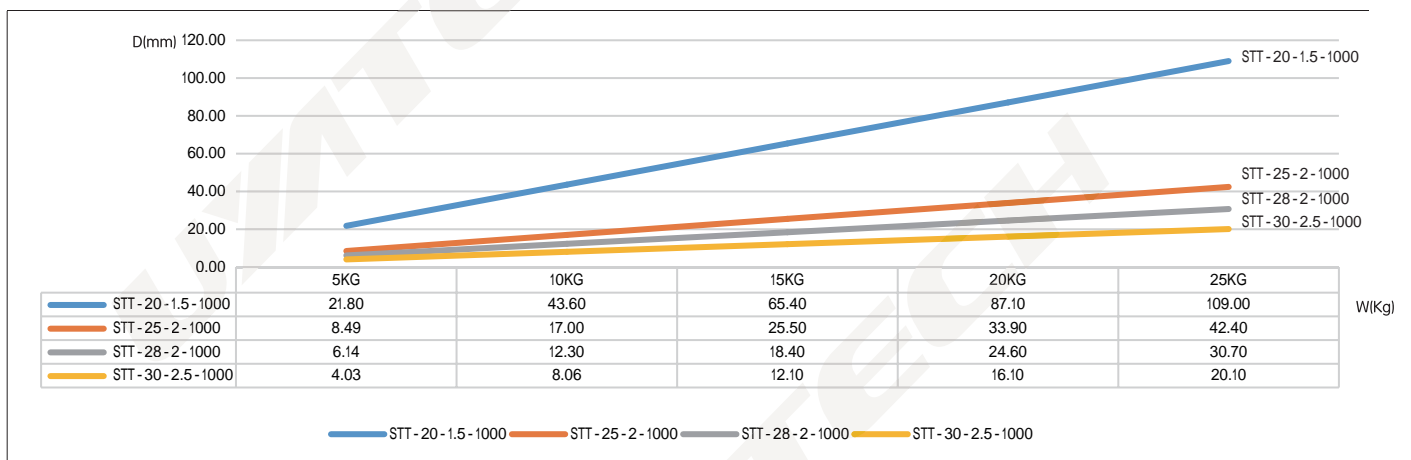
φ60/76 Aluminum tube deflection chart, L=2000



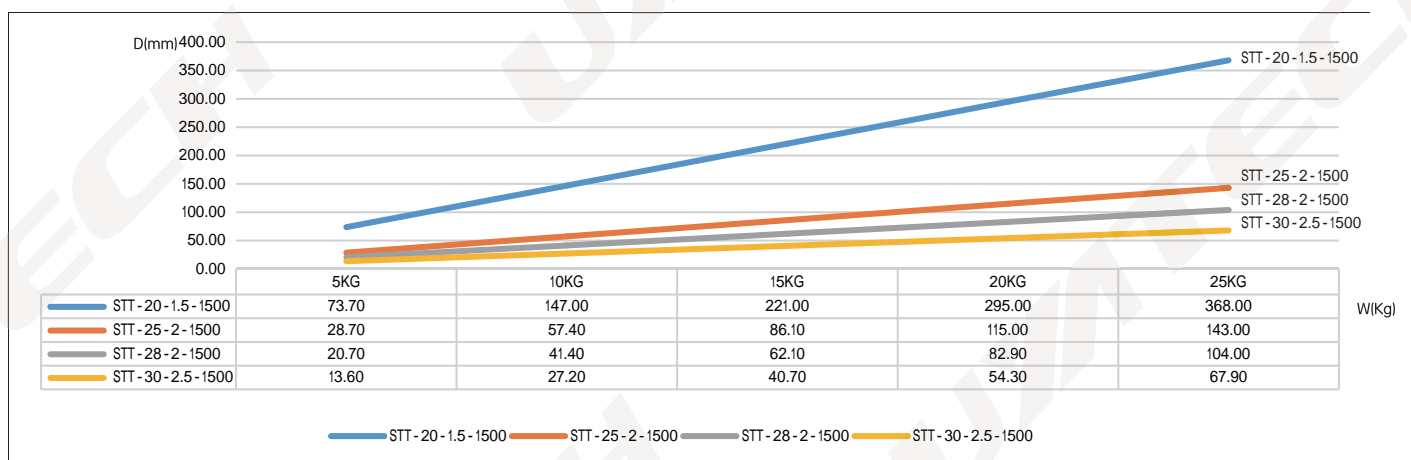
φ20/25/28/30 Steel tube deflection chart, L=500



φ20/25/28/30 Steel tube deflection chart, L=1000



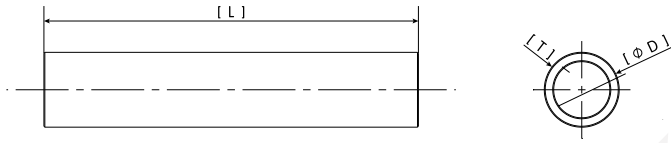
φ20/25/28/30 Steel tube deflection chart, L=1500



ALT | Aluminum Tube



Dimensions



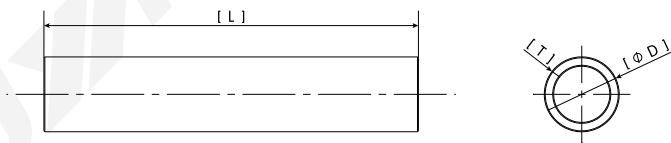
Ordering Information

Part No.	Ordering Code	Description	D	T	L
ALT-76-8-L	21538101	φ76 Al. tube, thickness=8	76	8	300-2000
ALT-76-5-L	21538102	φ76 Al. tube, thickness=5	76	5	300-2000
ALT-60-5-L	21538103	φ60 Al. tube, thickness=5	60	5	300-2000
ALT-40-5-L	21538105	φ40 Al. tube, thickness=5	40	5	300-2000
ALT-40-3-L	21538106	φ40 Al. tube, thickness=3	40	3	300-2000
ALT-38-4-L	21538107	φ38 Al. tube, thickness=4	38	4	300-2000
ALT-30-4-L	21538108	φ30 Al. tube, thickness=4	30	4	50-2000
ALT-25-3-L	21538109	φ25 Al. tube, thickness=3	25	3	50-2000

STT | Steel Tube



Dimensions



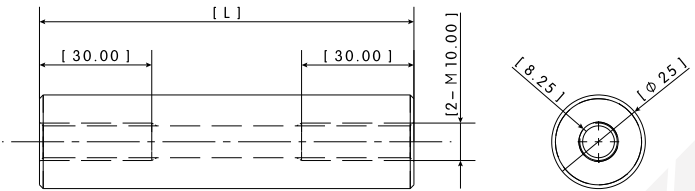
Ordering Information

Part No.	Ordering Code	Description	D	T	L
STT-30-2.5-L	74818101	φ30 Steel tube, thickness=2.5	30	2.5	50-2000
STT-28-2-L	74818102	φ28 Steel tube, thickness=2	28	2	50-2000
STT-25-2-L	74818103	φ25 Steel tube, thickness=2	25	2	50-2000
STT-20-1.5-L	74818104	φ20 Steel tube, thickness=1.5	20	1.5	50-2000

ALR-25 | 25 Aluminum Rod



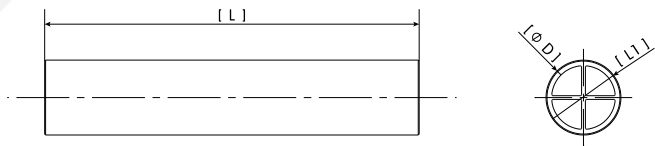
Dimensions



ALT-40/60-X | Aluminum Tube with X Profile



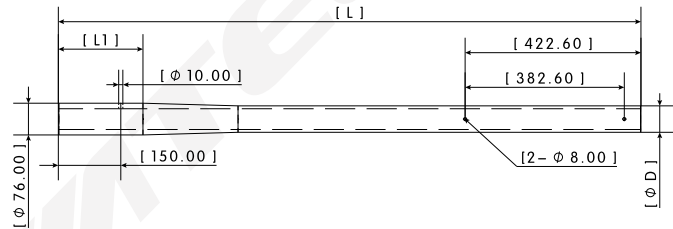
Dimensions



ATB | Tapered Boom



Dimensions



Ordering Information

Part No.	Ordering Code	Description	L	L1	D	Weight
ALR-25-L	21537305	φ25 Aluminum Rod (L can be customized)	50-1000	N/A	N/A	N/A
ALT-40-3X-L	21538140	φ40 Aluminum tube with X profile (L can be customized)	300-2000	40	3	N/A
ALT-60-5X-L	21538141	φ60 Aluminum tube with X profile (L can be customized)	300-2000	60	5	N/A
ATB-76-63.5-1400	21812201	Tapered Boom	1400	203.2	63.5	5.72
ATB-76-63.5-1650	21812202	Tapered Boom	1650	453.2	63.5	7.47
ATB-76-60-1400	21812203	Tapered Boom	1400	203.2	60.0	4.72
ATB-76-60-1650	21812204	Tapered Boom	1650	453.2	60.0	6.47