

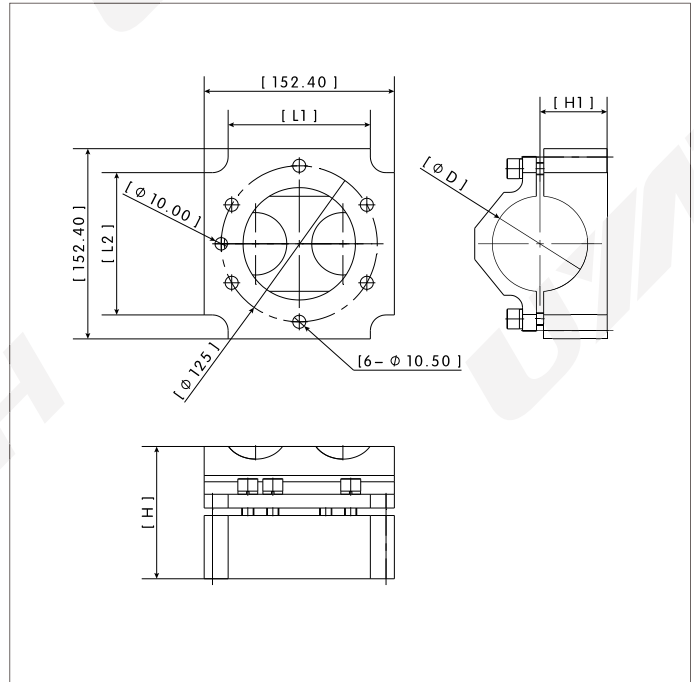
TCA-FLH | Flange Base



Features

- Material: Aluminum
- Operation Temperature: -20 C...80 C
- Surface Treatment : Anodized with sand blasting
- Function: Fixing press tooling boom

Dimensions



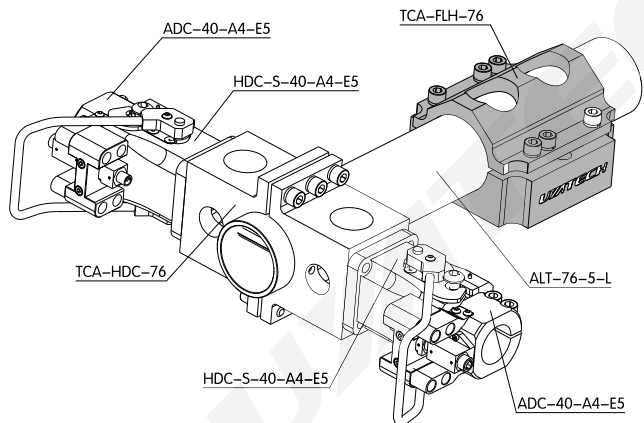
Ordering Information

Part No.	Ordering Code	Description	D	L1	L2	H	H1	Weight
TCA-FLH-76	81232101	φ76 Flange Base	76	114	114	106	53.7	2.48
TCA-FLH-60	81232102	φ60 Flange Base	60	96.4	104.4	87.9	42.9	2.00

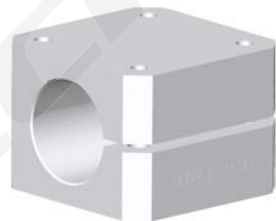
Relative Products



Application



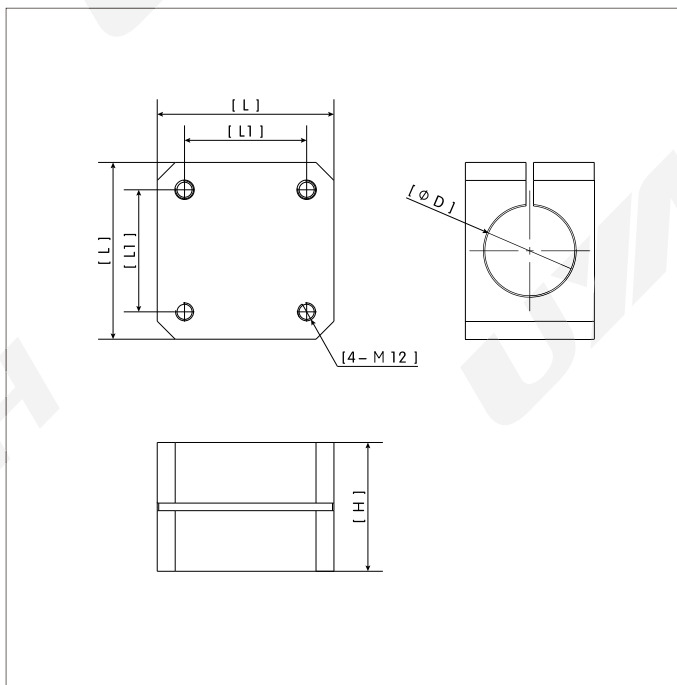
TCA-SQ | Square Base



Features

- Material: Aluminum
- Operation Temperature: -20 C...80 C
- Surface Treatment : Anodized with sand blasting
- Function: Fixing press tooling boom

Dimensions



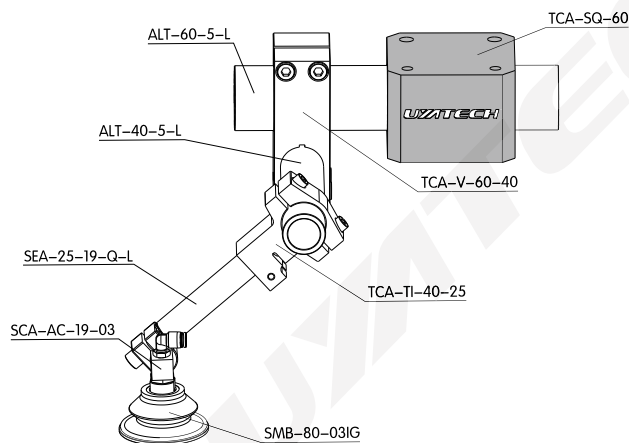
Ordering Information

Part No.	Ordering Code	Description	D	L	L1	H	Weight
TCA-SQ-60	81232103	φ60 Square Base	60	118	81.5	86	2.15
TCA-SQ-40	81232104	φ40 Square Base	40	85	60	60	0.78

Relative Products



Application



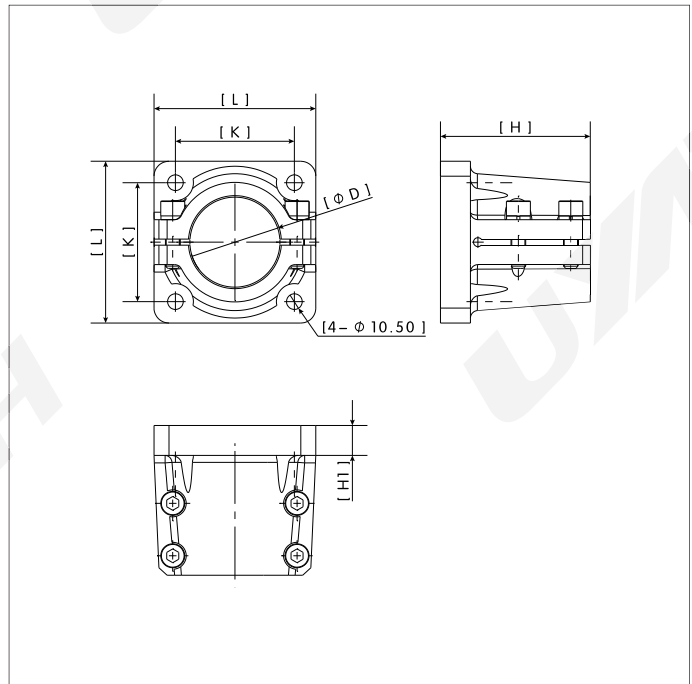
TCA-FLT | Flange Base



Features

- Material: Aluminum
- Operation Temperature: -20 C...80 C
- Surface Treatment : Anodized with sand blasting
- Function: Fixing press tooling boom

Dimensions



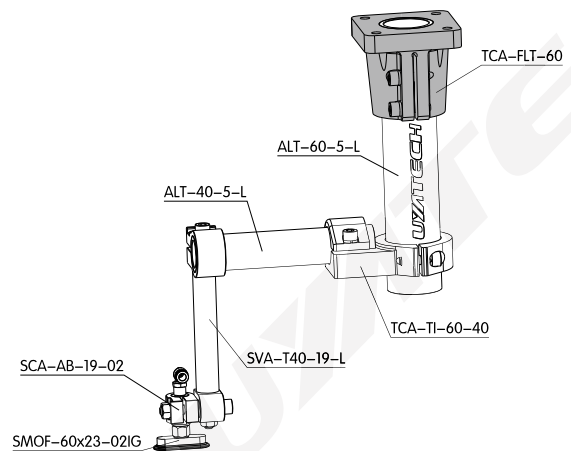
Ordering Information

Part No.	Ordering Code	Description	D	L	K	H	H1	Weight
TCA-FLT-60	81232105	φ60 Flange Base	60	108	79.4	100	20	1.31
TCA-FLT-40	81232106	φ40 Flange Base	40	84	60.3	91	18	0.79

Relative Products



Application



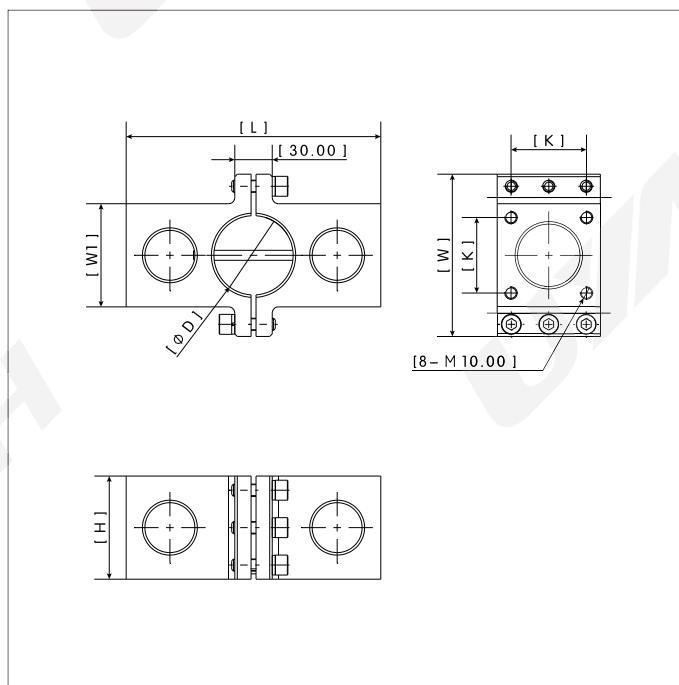
TCA-HDC | Tool Changer Base



Features

- Material: Aluminum
- Operation Temperature: -20 C...80 C
- Surface Treatment : Anodized with sand blasting
- Function: Fixing press tooling boom, and connecting with tool changer housing

Dimensions



Ordering Information

Part No.	Ordering Code	Description	D	L	W	W1	K	H	Weight
TCA-HDC-60	81232107	φ60 Tool Changer Base	60	204	130	82.6	60.5	82.6	2.26
TCA-HDC-63.5	81232108	φ63.5 Tool Changer Base	63.5	204	130	82.6	60.5	82.6	2.21
TCA-HDC-76	81232109	φ76 Tool Changer Base	76	204	146	98.6	60.5	82.6	2.72

Relative Products

φ40 Housing

HDC-S-40-A4-E5

φ76 Al. Tube

ALT-76...

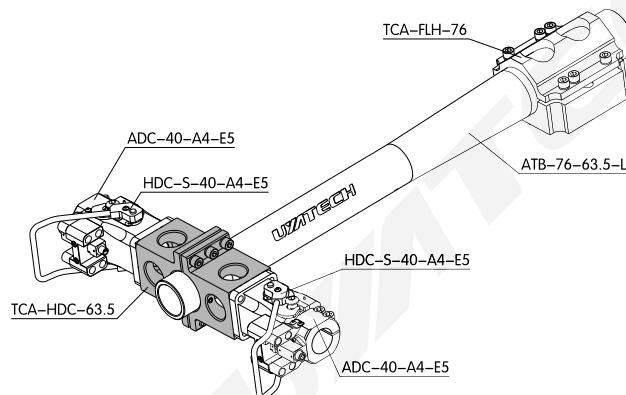
φ40 Bayonet

ADC-40-A4-E5

φ60 Al. Tube

ALT-60-5-L

Application



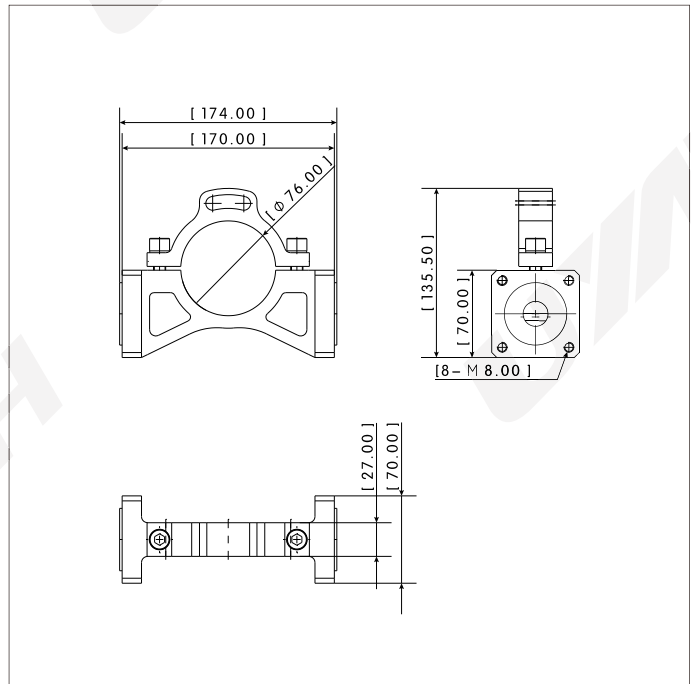
TCS-HAB-76 | Tool Changer Base



Features

- Material: Steel
- Operation Temperature: -20 C...80 C
- Surface Treatment : Blackening
- Function: Fixing press tooling boom, and connecting with tool changer housing
- Weight: 2.4Kg

Dimensions



Ordering Information

Part No.	Ordering Code	Description
TCS-HAB-76	81232110	Tool Changer Base

Relative Products

Tool Changer Bayonet

AAB

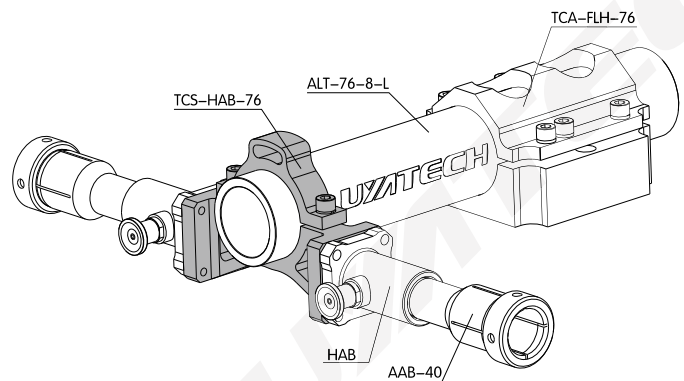
φ76 Al. Tube

ALT-76-8-L

Tool Changer Housing

HAB

Application



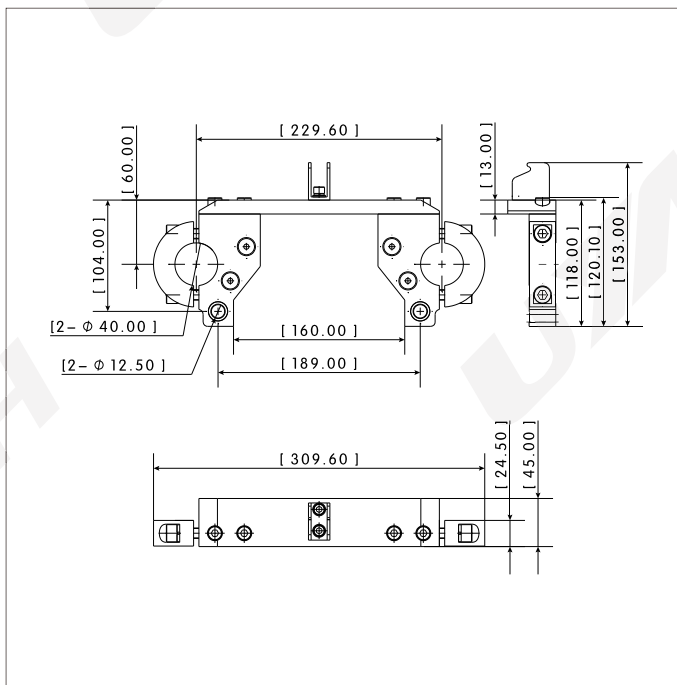
TCA-BCK-A-40 | Boom Bracket



Features

- Material: Aluminum, steel
- Operation Temperature: -20 C...80 C
- Surface Treatment : Anodized with sandblasting, blackening
- Function: Fixing press tooling boom, and connecting with $\phi 40$ AL. tubes
- Weight: 1.36Kg

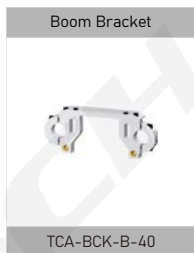
Dimensions



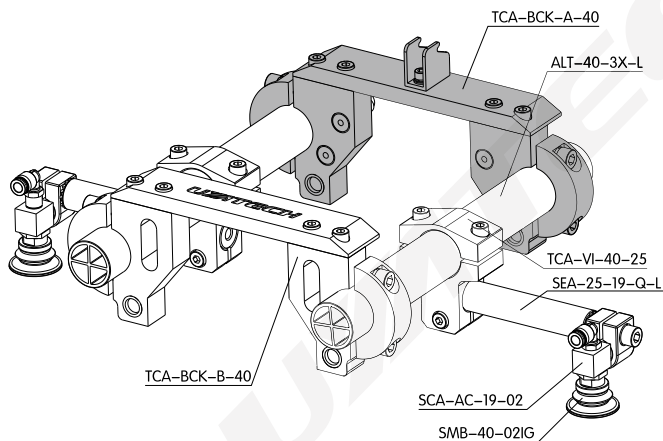
Ordering Information

Part No.	Ordering Code	Description
TCA-BCK-A-40	81232111	Boom Bracket

Relative Products



Application



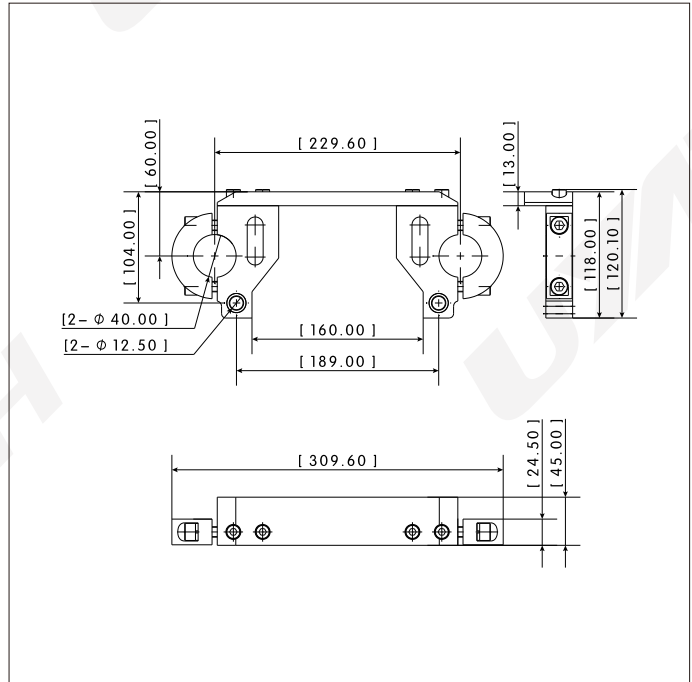
TCA-BCK-B-40 | Boom Bracket



Features

- Material: Aluminum, steel
- Operation Temperature: -20 C...80 C
- Surface Treatment : Anodized with sandblasting, blackening
- Function: Fixing press tooling boom, and connecting with $\phi 40$ AL. tubes
- Weight: 1.22Kg

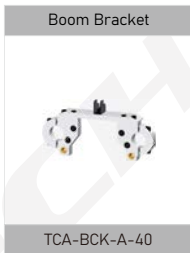
Dimensions



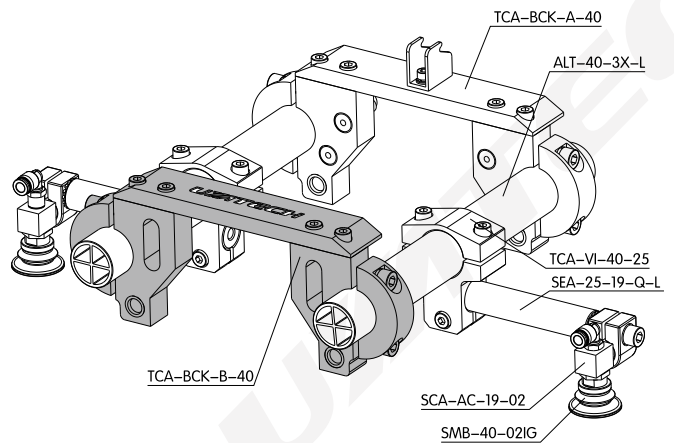
Ordering Information

Part No.	Ordering Code	Description
TCA-BCK-B-40	81232112	Boom Bracket

Relative Products



Application



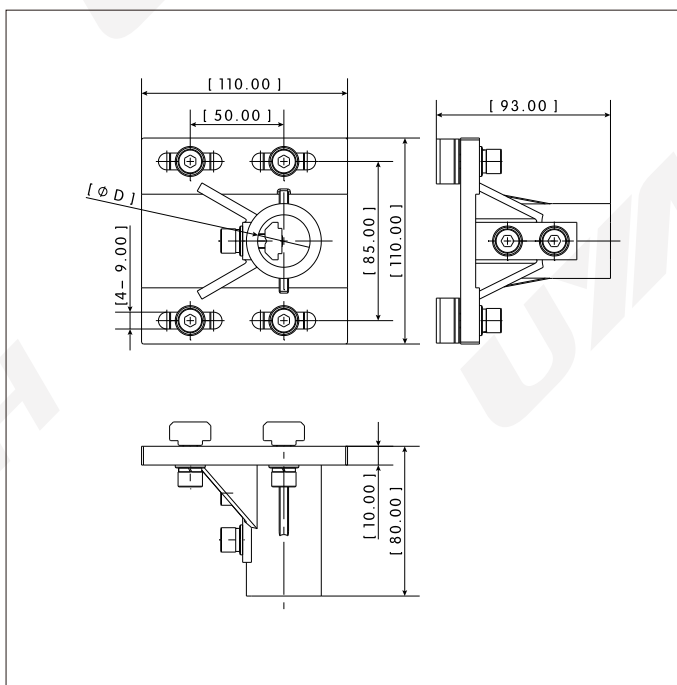
TCA-PF | Transfer Profile Base



Features

- Material: Aluminum
- Operation Temperature: -20 C...80 C
- Surface Treatment : Anodized with sandblasting
- Function: Fixing press tooling boom, and connecting with transfer profile TPB

Dimensions



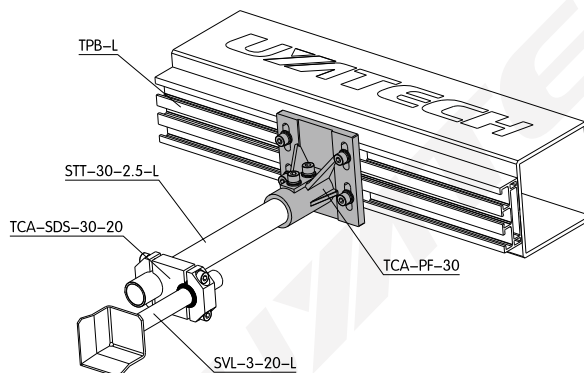
Ordering Information

Part No.	Ordering Code	Description	D	Weight
TCA-PF-28	81232113	$\phi 28$ Transfer profile base	28	0.75
TCA-PF-30	81232114	$\phi 30$ Transfer profile base	30	0.73

Relative Products

<p>Transfer Profile</p> <p>TPB-L-A/B/C/.../F</p>	<p>Transfer Profile Base</p> <p>TCS-PF</p>
<p>$\phi 28$ Steel Tube</p> <p>STT-28-2-L</p>	<p>$\phi 30$ Steel Tube</p> <p>STT-30-2.5-L</p>

Application



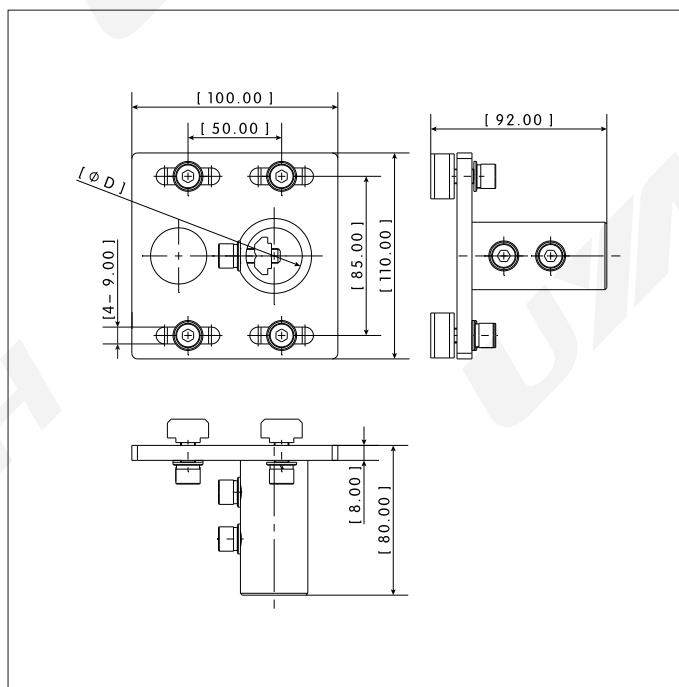
TCS-PF | Transfer Profile Base



Features

- Material: Steel
- Operation Temperature: -20 C...80 C
- Surface Treatment : Zinc galvanized
- Function: Fixing press tooling boom, and connecting with transfer profile TPB

Dimensions



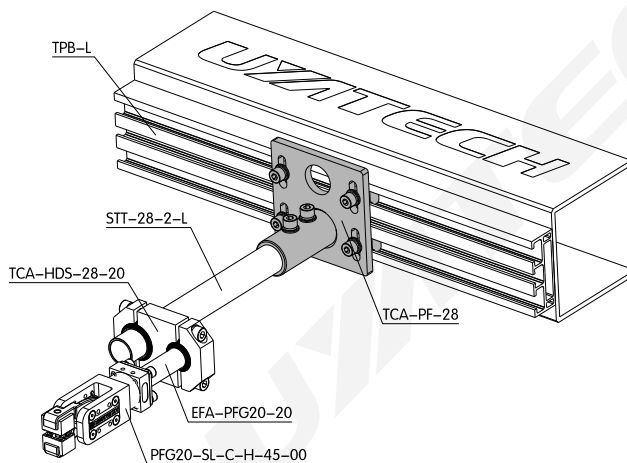
Ordering Information

Part No.	Ordering Code	Description	D	Weight
TCS-PF-28	81232121	φ28 Transfer profile base	28	0.95
TCS-PF-30	81232122	φ30 Transfer profile base	30	0.94

Relative Products

<p>Transfer Profile</p> <p>TPB-L-A/B/C/.../F</p>	<p>Transfer Profile Base</p> <p>TCA-PF</p>
<p>φ28 Steel Tube</p> <p>STT-28-2-L</p>	<p>φ30 Steel Tube</p> <p>STT-30-2.5-L</p>

Application



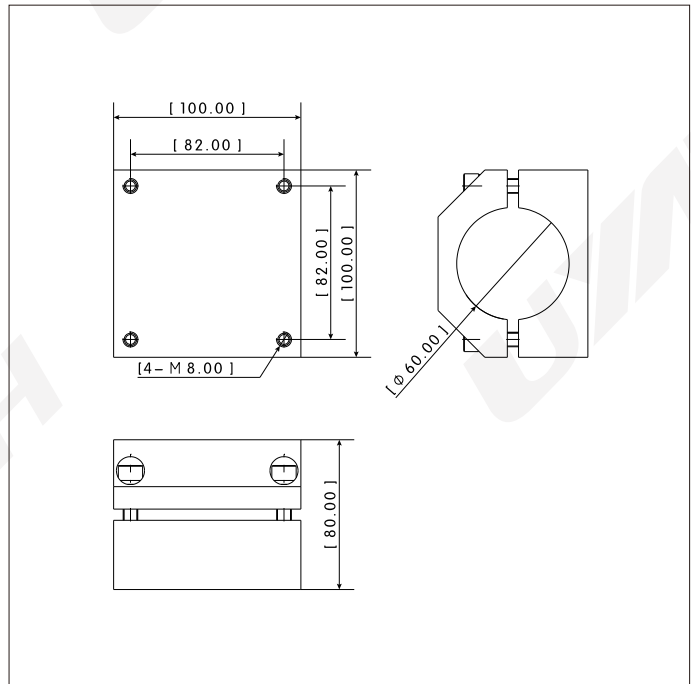
TCA-HF-60 | Boom Base



Features

- Material: Aluminum
- Operation Temperature: -20 C...80 C
- Surface Treatment : Anodized with sand blasting
- Function: Connecting with hot-forming frame FAB-50, and clamping $\phi 60$ tube
- Weight: 1.21Kg

Dimensions



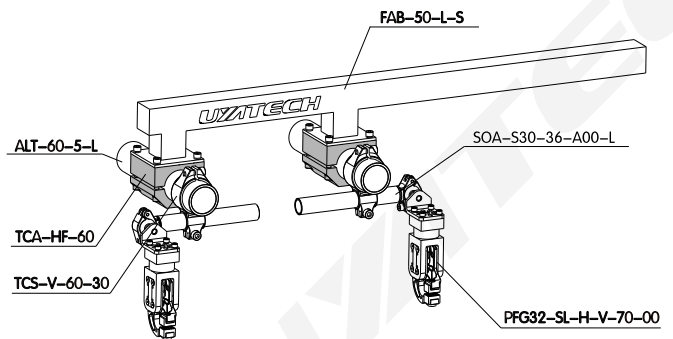
Ordering Information

Part No.	Ordering Code	Description
TCA-HF-60	81232115	Boom base

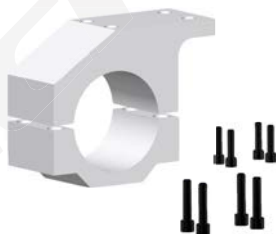
Relative Products



Application



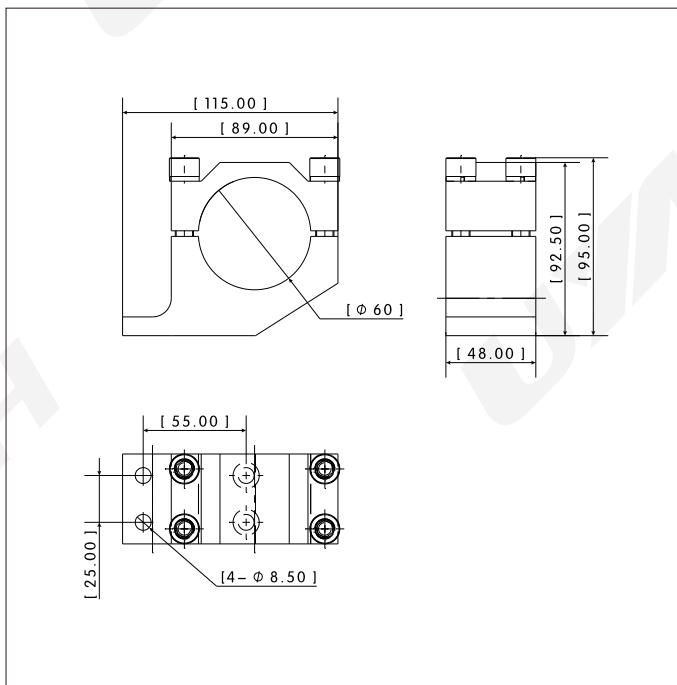
TCA-GSP-60 | Transition Clamp



Features

- Material: Aluminum
- Operation Temperature: -20 C...80 C
- Surface Treatment : Anodized with sand blasting
- Function: Connecting with hot-forming frame FAB-50, and clamping $\phi 60$ tube
- Weight: 0.81Kg

Dimensions



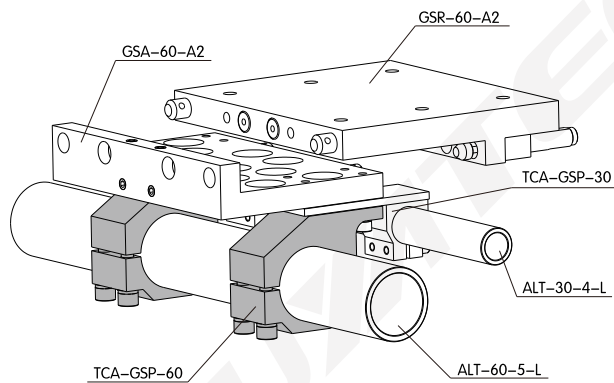
Ordering Information

Part No.	Ordering Code	Description
TCA-GSP-60	81232116	Transition clamp for $\phi 60$ AL tube

Relative Products

<p>Quick Change Plate</p> <p>GSA-60-A2</p>	<p>Quick Change Plate</p> <p>GSR-60-A2</p>
<p>Transition Clamp</p> <p>TCA-GSP</p>	<p>$\phi 60$ AL Tube</p> <p>ALT-60-5-L</p>

Application



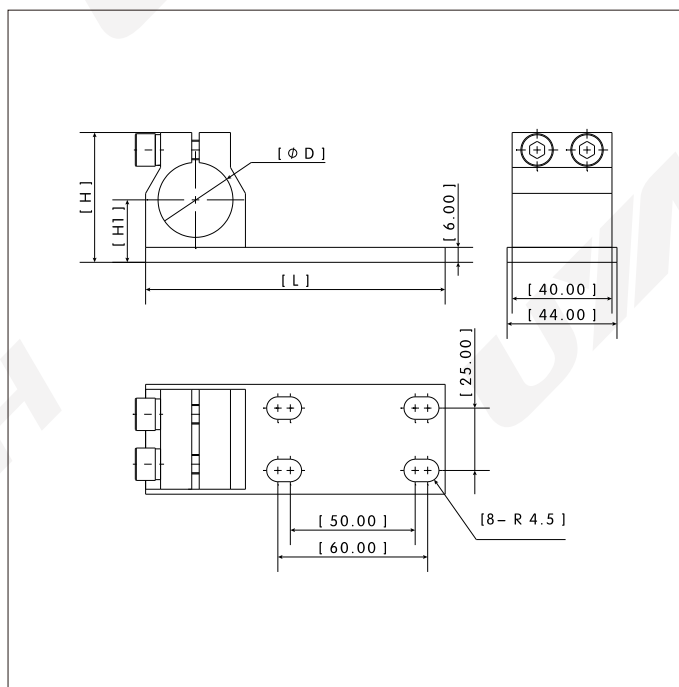
TCA-GSP | Transition Clamp



Features

- Material: Steel
- Operation Temperature: -20 C...80 C
- Surface Treatment : Balckening

Dimensions



Ordering Information

Part No.	Ordering Code	Description	D	L	H	H1	Weight
TCA-GSP-30	81232117	Transition clamp for φ30 Al. tube	30	120	52	25	0.49
TCA-GSP-40	81232118	Transition clamp for φ40 Al. tube	40	130	62	30	0.67

Relative Products

Quick Change Plate

GSA-60-A2

Transition Clamp

TCA-GSP-60

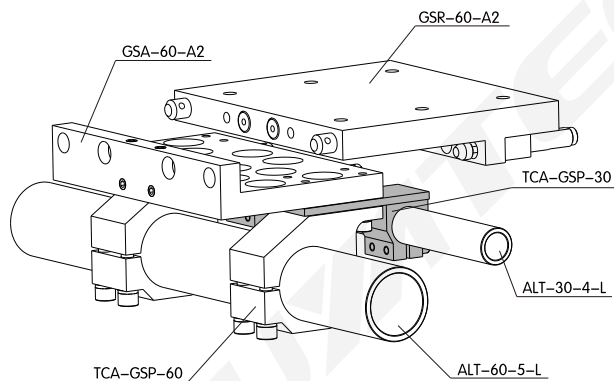
Quick Change Plate

GSR-60-A2

Al. Tube

ALT-30/40...

Application



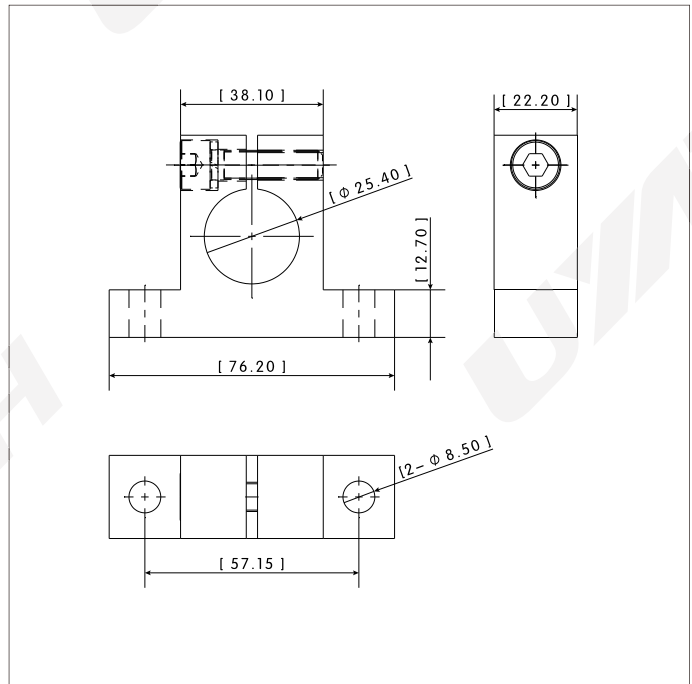
TCA-SH-25 | Stantions



Features

- Material: Aluminum
- Operation Temperature: -20 C...80 C
- Surface Treatment : Anodized with sand blasting
- Function: Connecting tubes
- Weight: 0.13Kg

Dimensions



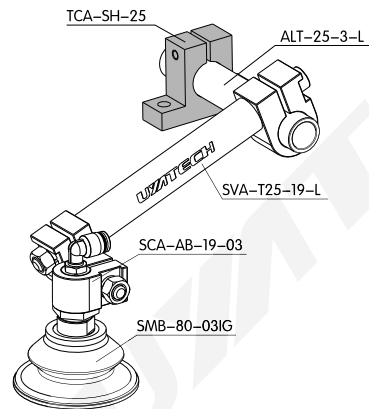
Ordering Information

Part No.	Ordering Code	Description
TCA-SH-25	81232119	Stantions

Relative Products



Application



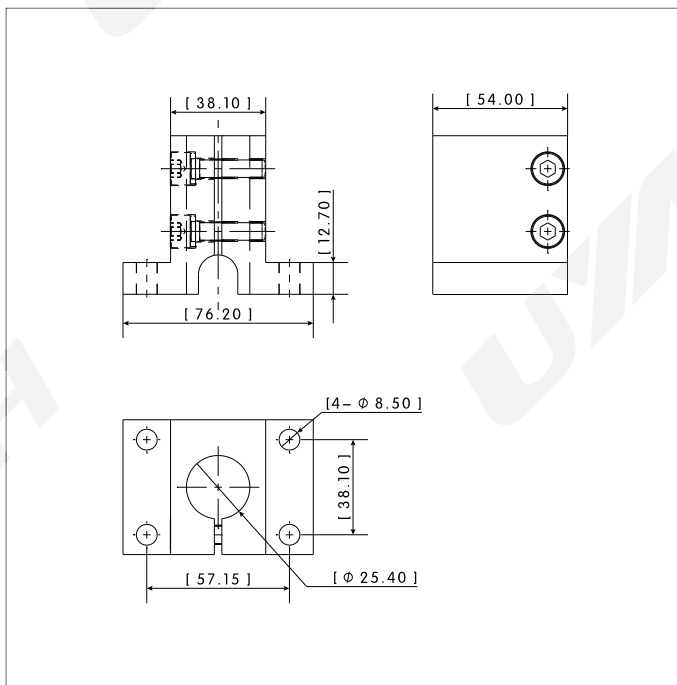
TCA-SV-25 | Stantions



Features

- Material: Aluminum
- Operation Temperature: -20 C...80 C
- Surface Treatment : Anodized with sand blasting
- Function: Connecting tubes
- Weight: 0.34Kg

Dimensions



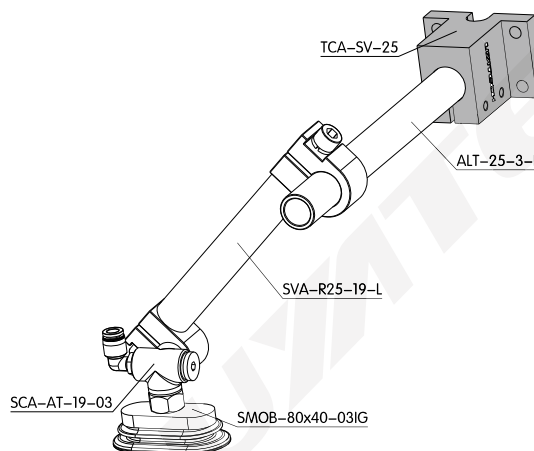
Ordering Information

Part No.	Ordering Code	Description
TCA-SV-25	81232120	Stantions

Relative Products



Application



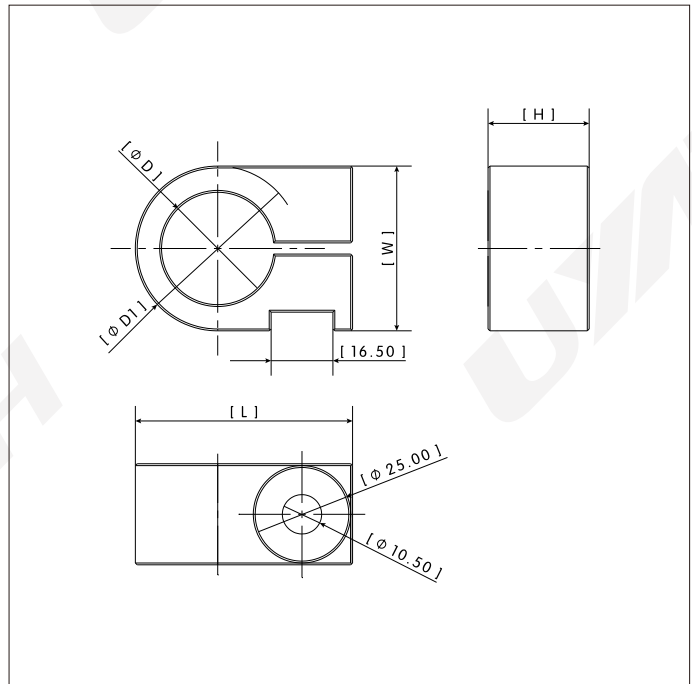
C-Clamp



Features

- Material: Aluminum
- Operation Temperature: -20 C...80 C
- Surface Treatment : Anodized with sand blasting
- Function: Swivel arm accessories, clamping tubes

Dimensions



Ordering Information

Part No.	Ordering Code	Description	D	D1	L	W	H	Weight
C19-O	23514101	φ19 C-clamp	19	31	46.5	31	27	0.06
C25	23514102	φ25 C-clamp	25	39	54.5	39	27	0.09
C30	23514103	φ30 C-clamp	30	44	58	44	27	0.10
C38	23514104	φ38 C-clamp	38	52	75	40.5	32	0.15
C40	23514105	φ40 C-clamp	40	52	75	40.5	32	0.14

Relative Products

C-Clamp

C19-Q

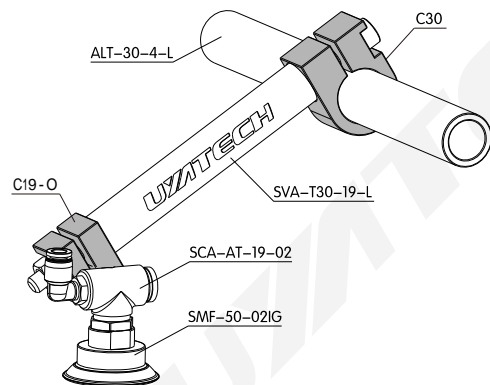
φ25 Al. Tube

ALT-25-3-L

Swivel Arm

SVA-T

Application



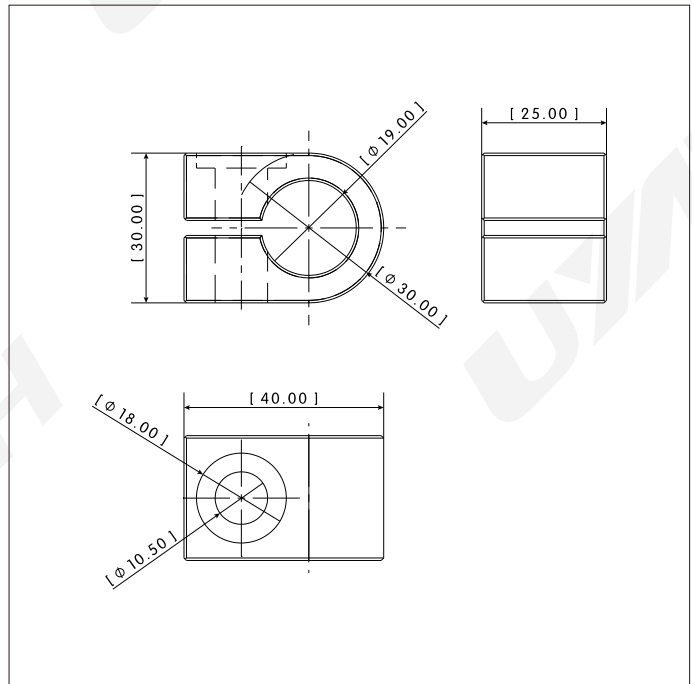
C19-Q | C Clamp



Features

- Material: Aluminum
- Operation Temperature: -20 C...80 C
- Surface Treatment : Anodized with sand blasting
- Function: Swivel arm accessories, clamping tubes
- Weight: 0.45Kg

Dimensions




Ordering Information

Part No.	Ordering Code	Description
C19-Q	23514106	C-Clamp


Relative Products

C-Clamp



C19-0/25/30/38/40

φ25 Al. Rod



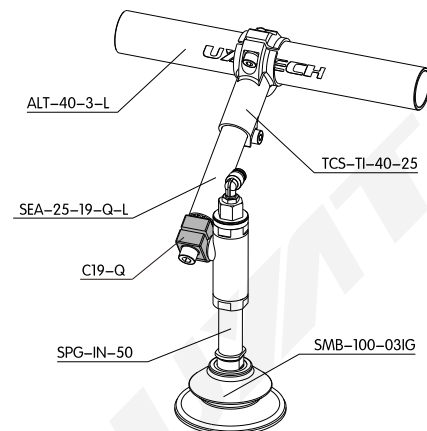
ALR-25-L

Swivel Arm



SVA-R

Application



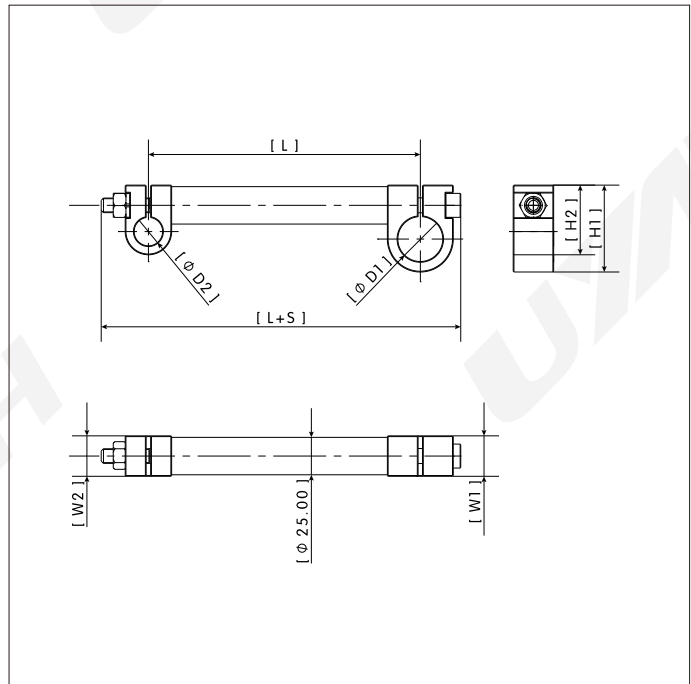
SVA-T | Swivel Arm



Features

- Material: Aluminum
- Operation Temperature: -20 C...80 C
- Surface Treatment : Anodized with sand blasting
- Function: Clamping tubes and end effector adapter

Dimensions



Ordering Information

Part No.	Ordering Code	Description	D1	D2	L	S	W1	W2	H1	H2
SVA-T40-25-L	74832101	40-25 Swivel arm	40	25	50-235	58	32	27	75	54.5
SVA-T40-19-L	74832102	40-19 Swivel arm	40	19	50-235	52	32	27	75	46.5
SVA-T38-19-L	74832103	38-19 Swivel arm	38	19	50-235	52	32	27	75	46.5
SVA-T30-19-L	74832104	30-19 Swivel arm	30	19	50-235	58.5	27	27	58	46.5
SVA-T25-19-L	74832105	25-19 Swivel arm	25	19	50-235	51	27	27	54.5	46.5
SVA-T25-25-L	74832106	25-25 Swivel arm	25	25	50-235	57	27	27	54.5	54.5

Relative Products

Suction Cup Adapter

SCA-AB-19/SCA-F02

Apple Core Connector

EFA-ACL-19-X

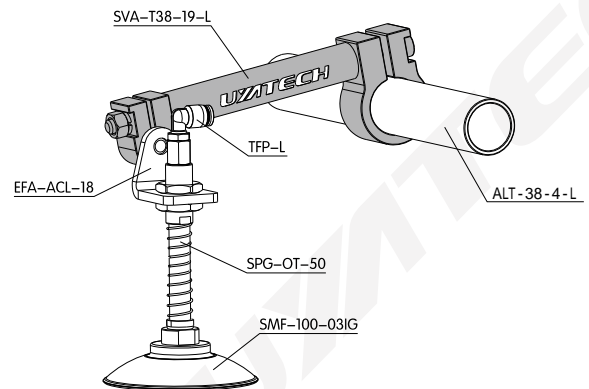
Suction Cup Adapter

SCA-AC

φ38 Al. Tube

ALT-38-4-L

Application



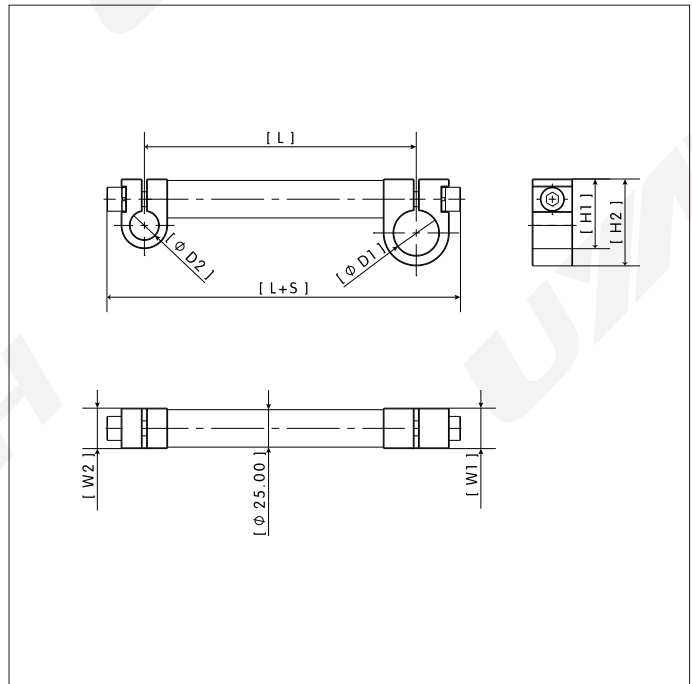
SVA-R | Swivel Arm



Features

- Material: Aluminum
- Operation Temperature: -20 C...80 C
- Surface Treatment : Anodized with sand blasting
- Function: Clamping tubes and end effector adapter

Dimensions



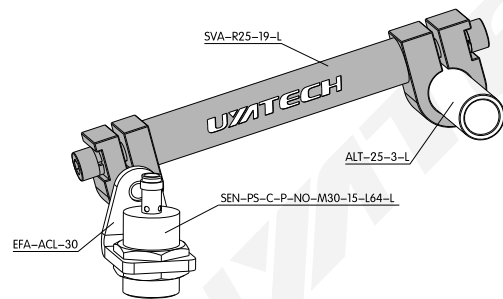
Ordering Information

Part No.	Ordering Code	Description	D1	D2	L	S	W1	W2	H1	H2
SVA-R40-25-L	74832107	40-25 Swivel arm	40	25	50-500	56	32	27	75	54.5
SVA-R40-19-L	74832108	40-19 Swivel arm	40	19	50-500	53	32	27	75	46.5
SVA-R38-19-L	74832109	38-19 Swivel arm	38	19	50-500	53	32	27	75	46.5
SVA-R30-19-L	74832110	30-19 Swivel arm	30	19	50-500	54.5	27	27	58	46.5
SVA-R25-19-L	74832111	25-19 Swivel arm	25	19	50-500	53	27	27	54.5	46.5
SVA-R25-25-L	74832112	25-25 Swivel arm	25	25	50-500	56	27	27	54.5	54.5

Relative Products

<p>Apple Core Connector</p>  <p>EFA-ACL</p>	<p>Apple Core Connector</p>  <p>EFA-ACL-19-30</p>
<p>DBD Bracket Changer</p>  <p>DBB-QCK-19</p>	<p>$\phi 25$ Al. Tube</p>  <p>ALT-25-3-L</p>

Application



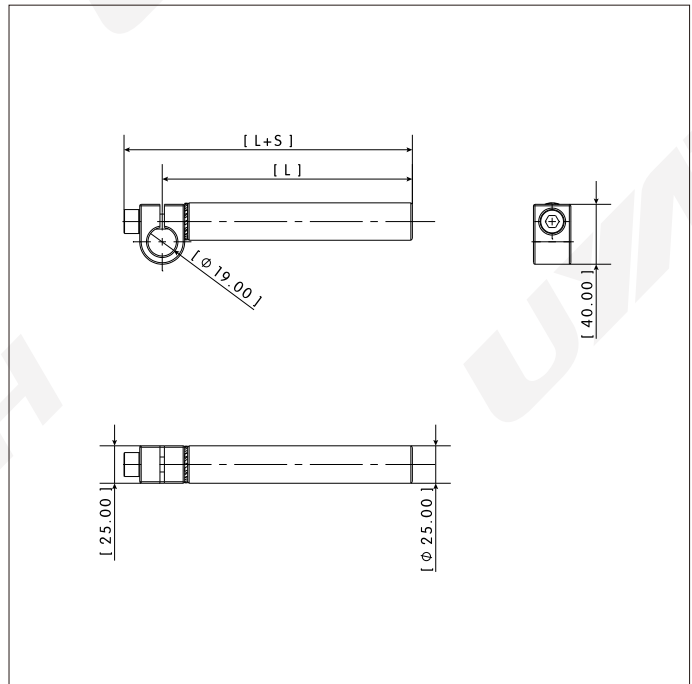
SEA-25-19-Q-L | Extension Arm



Features

- Material: Aluminum
- Operation Temperature: -20 C...80 C
- Surface Treatment : Anodized with sand blasting
- Function: Clamping tubes and end effector adapter

Dimensions



Ordering Information

Part No.	Ordering Code	Description	L	S
SEA-25-19-Q-L	74322101	25-19 Extension Arm	50-500	25.5

Relative Products

T Clamp

TCA-TI-40-25

Cross Clamp

TCA-V

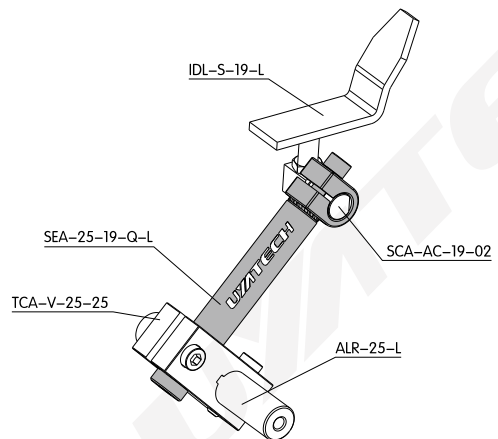
Cross Clamp

TCA-VI-40-25

Suction Cup Adapter

SCA-AB-19/SCA-F02

Application



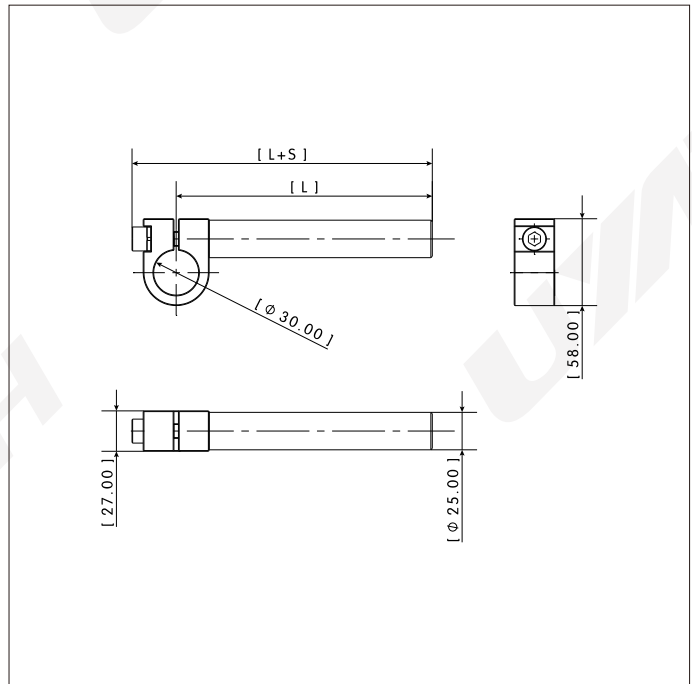
SEA-25-30-L | Extension Arm



Features

- Material: Aluminum
- Operation Temperature: -20 C...80 C
- Surface Treatment : Anodized with sand blasting
- Function: Clamping tubes and end effector adapter

Dimensions



Ordering Information

Part No.	Ordering Code	Description	L	S
SEA-25-30-L	74322103	25-30 Extension Arm	50-500	29.5

Relative Products

T Clamp

TCA-TI-40-25

Cross Clamp

TCA-V

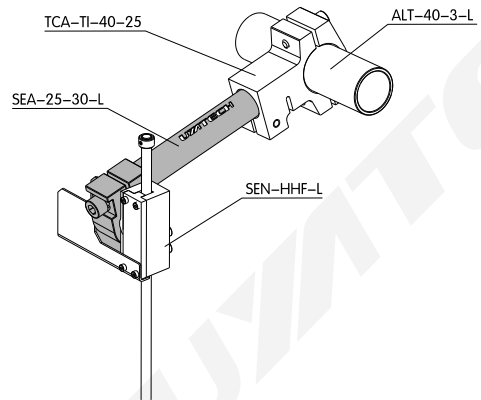
Cross Clamp

TCA-VI-40-25

Suction Cup Adapter

SCA-AB-19/SCA-F02

Application



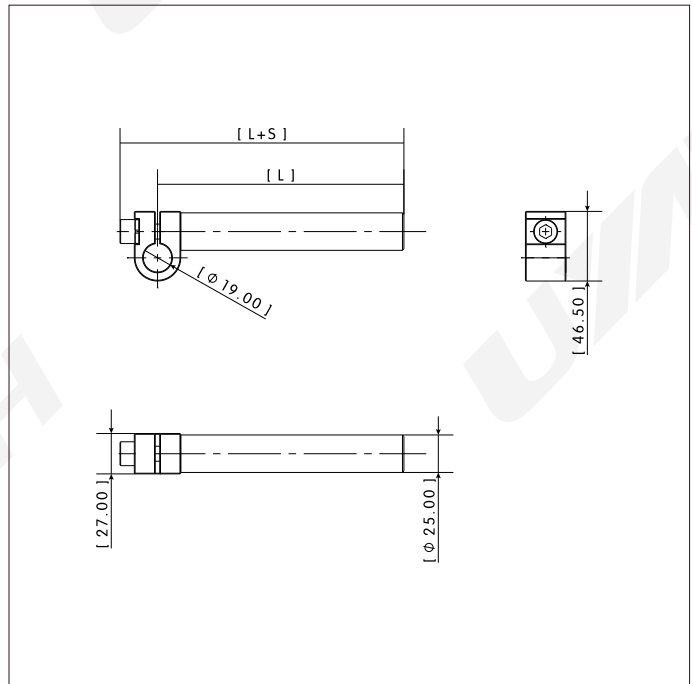
SEA-25-19-0-L | Extension Arm



Features

- Material: Aluminum
- Operation Temperature: -20 C...80 C
- Surface Treatment : Anodized with sand blasting
- Function: Clamping tubes and end effector adapter

Dimensions



Ordering Information

Part No.	Ordering Code	Description	L	S
SEA-25-19-0-L	74322102	25-19 Extension Arm	50-500	25

Relative Products

T Clamp

TCA-TI-40-25

Cross Clamp

TCA-V

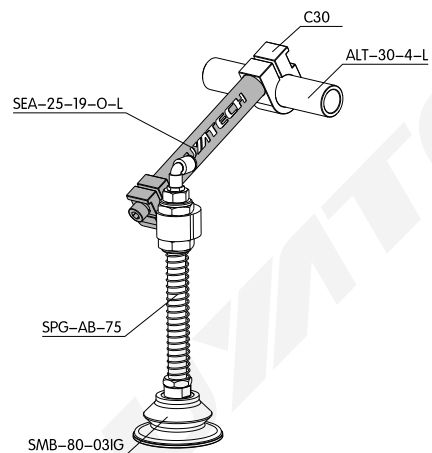
Cross Clamp

TCA-VI-40-25

Suction Cup Adapter

SCA-AC

Application



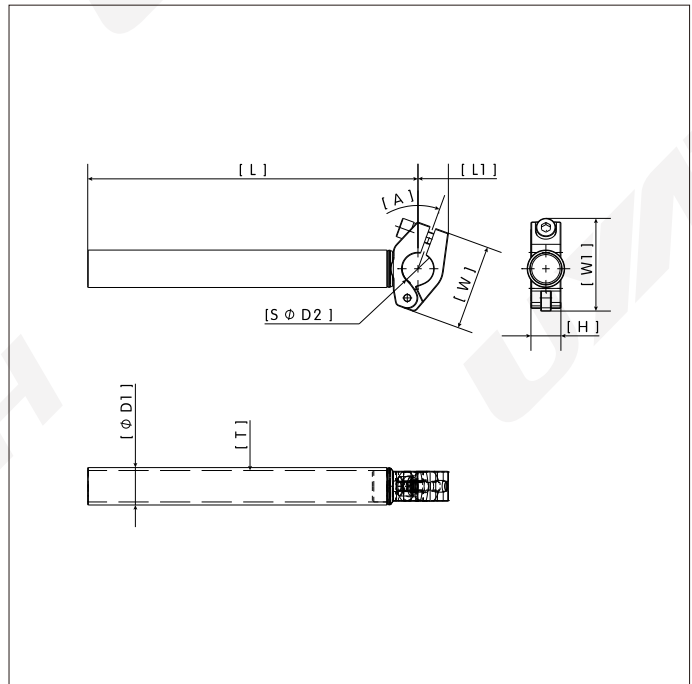
SOA-S | Extension Arm



Features

- Material: Steel
- Operation Temperature: -20 C...80 C
- Surface Treatment : Blackening
- Function: Clamping end effector adapter (ball connector)

Dimensions



Ordering Information

Part No.	Ordering Code	D1	D2	H	W	W1	T	A	L1	L
SOA-S20-28-A00-L	74632101	20	28.5	20	57	57	1.5	0°	18	50-500
SOA-S20-28-A20-L	74632102	20	28.5	20	57	61.9	1.5	20°	20.3	50-500
SOA-S25-28-A00-L	74632103	25	28.5	20	57	57	2	0°	18	50-500
SOA-S25-28-A20-L	74632104	25	28.5	20	57	61.9	2	20°	20.3	50-500
SOA-S28-28-A00-L	74632105	28	28.5	20	57	57	2	0°	18	50-500
SOA-S28-28-A20-L	74632106	28	28.5	20	57	61.9	2	20°	20.3	50-500
SOA-S30-28-A20-L	74632107	30	28.5	20	57	61.9	2.5	20°	20.3	50-500
SOA-S30-36-A00-L	74632108	30	36	22	64.5	64.5	2.5	0°	20.5	50-500

Relative Products

T Clamp

TCA-TI

Ball Connector

EFA-SBC

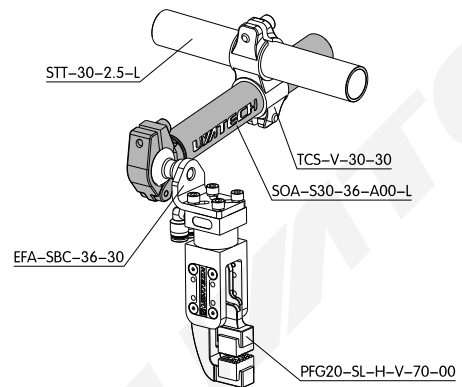
Cross Clamp

TCS-V-60-30

Ball Connector

EFA-MNG-SS

Application



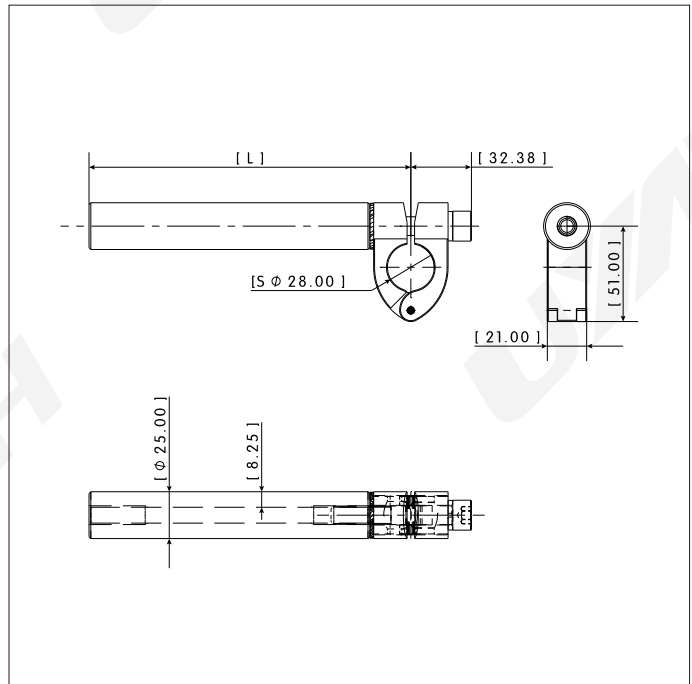
SOA-25-28-L | Extension Arm



Features

- Material: Aluminum
- Operation Temperature: -20 C...80 C
- Surface Treatment : Anodized with sandblasting
- Function: Clamping end effector adapter (ball connector)

Dimensions



Ordering Information

Part No.	Ordering Code	Description	L
SOA-25-28-L	74632109	25-28 Extension Arm	50-500

Relative Products

T Clamp

TCA-TI-40-25

Ball Connector

EFA-SBC

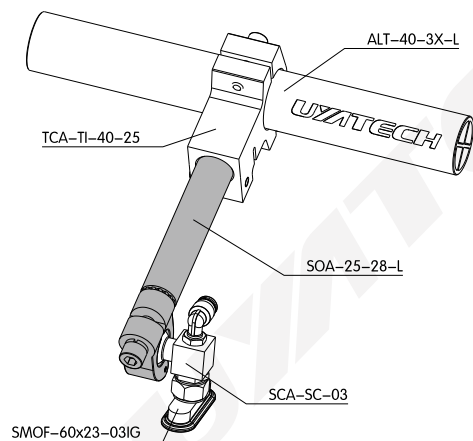
Cross Clamp

TCA-V

Ball Connector

EFA-MNG-SA

Application



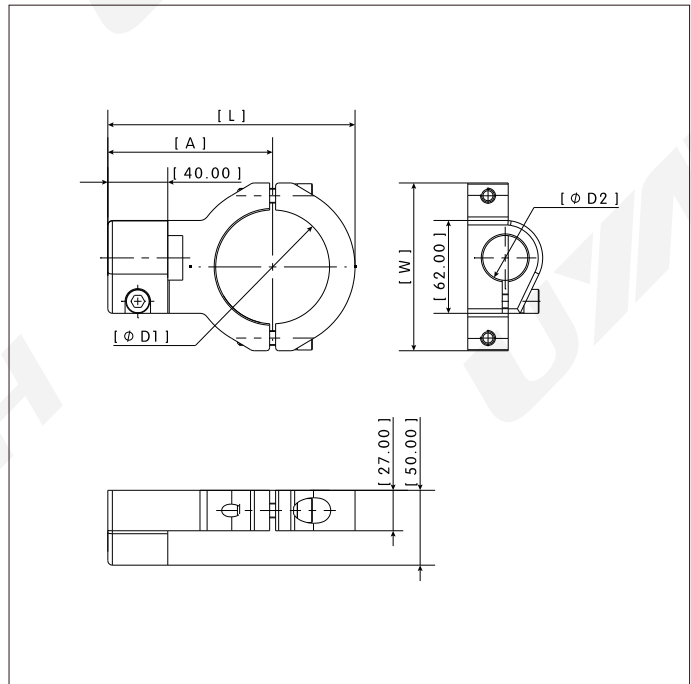
TCA-TI | T Clamp



Features

- Material: Aluminum
- Operation Temperature: -20 C...80 C
- Surface Treatment : Anodized with sandblasting
- Function: T clamping 2 tubes

Dimensions



Ordering Information

Part No.	Ordering Code	Description	D1	D2	L	W	A	Weight
TCA-TI-76-40	81514101	76-40 T clamp	76	40	165	112	110	0.65
TCA-TI-76-38	81514102	76-38 T clamp	76	38	165	112	110	0.67
TCA-TI-76-30	81514103	76-30 T clamp	76	30	165	112	110	0.72
TCA-TI-76-25	81514104	76-25 T clamp	76	25	165	112	110	0.74
TCA-TI-60-40	81514105	60-40 T clamp	60	40	137	100	94	0.52
TCA-TI-60-38	81514106	60-38 T clamp	60	38	137	100	94	0.53
TCA-TI-60-30	81514107	60-30 T clamp	60	30	137	100	94	0.58
TCA-TI-60-25	81514108	60-25 T clamp	60	25	137	100	94	0.61

Relative Products

Extension Arm

SEA-25-19-Q-L

Extension Arm

SOA-25-28-L

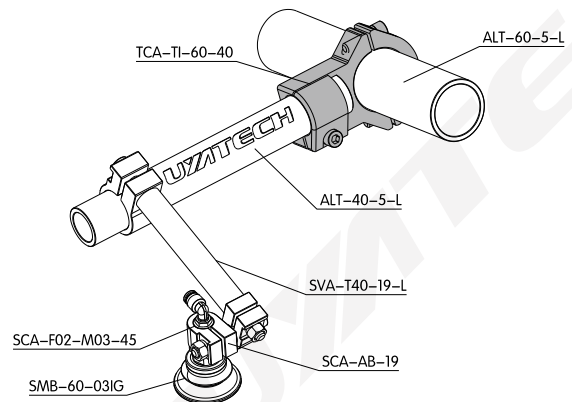
Extension Arm

SOA-S

φ60 AL Tube

ALT-60-5-L

Application



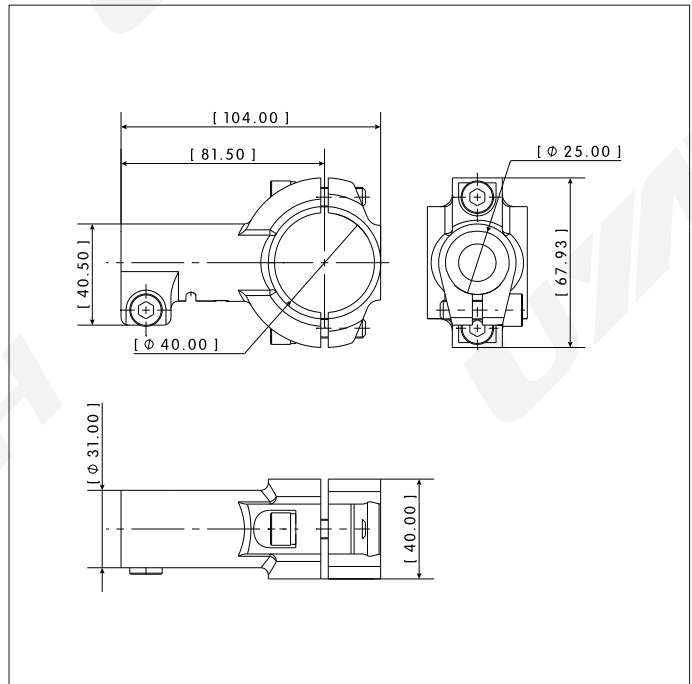
TCS-TI-40-25 | T Clamp



Features

- Material: Steel
- Operation Temperature: -20 C...80 C
- Surface Treatment : Blackening
- Function: T clamping 2 tubes
- Weight: 0.44Kg

Dimensions




Ordering Information

Part No.	Ordering Code	Description
TCS-TI-40-25	81514110	40-25 T clamp


Relative Products

Extension Arm



SEA-25-19-Q-L

φ40 Al. Tube



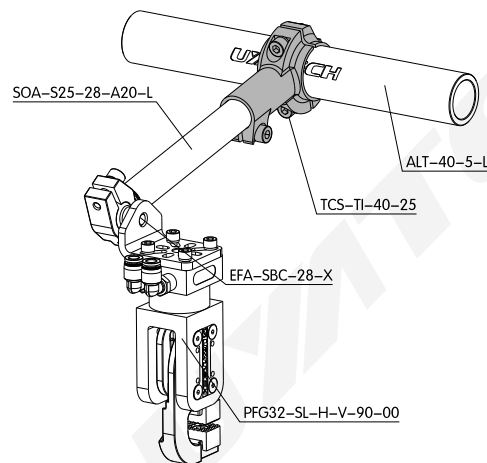
ALT-40-5-L

Extension Arm

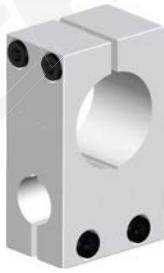


SOA-S

Application



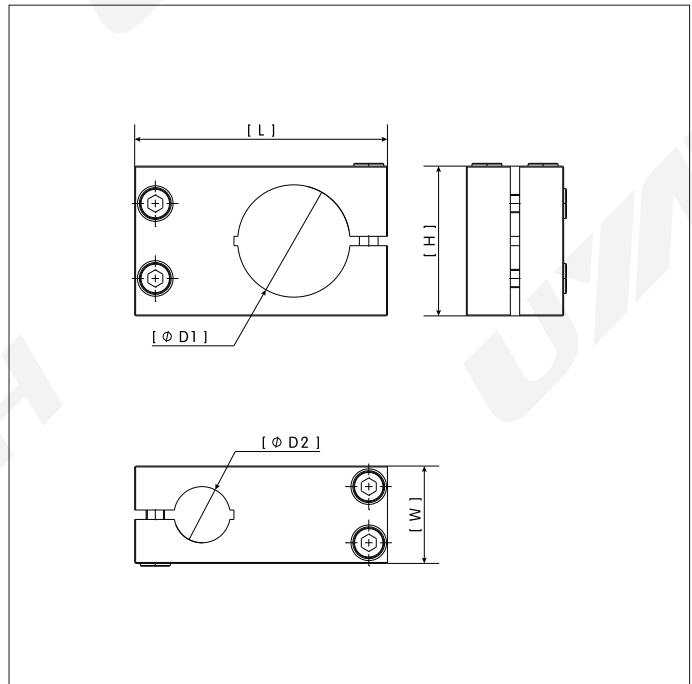
TCA-V | Cross Clamp



Features

- Material: Aluminum
- Operation Temperature: -20 C...80 C
- Surface Treatment : Anodized with sandblasting
- Function: Cross clamping 2 tubes

Dimensions




Ordering Information

Part No.	Ordering Code	Description	D1	D2	L	W	H	Weight
TCA-V-60-40	81238301	60-40 Cross clamp	60	40	145	80	52	1.05
TCA-V-60-30	81238302	60-30 Cross clamp	60	30	135	80	52	1.06
TCA-V-60-25	81238303	60-25 Cross clamp	60	25	130	80	52	1.05
TCA-V-40-40	81238304	40-40 Cross clamp	40	40	116	52	52	0.535
TCA-V-40-25	81238305	40-25 Cross clamp	40	25	104	50	35	0.334
TCA-V-30-30	81238306	30-30 Cross clamp	30	30	100	39	39	0.266
TCA-V-30-25	81238307	30-25 Cross clamp	30	25	94	40	35	0.261
TCA-V-25-25	81238308	25-25 Cross clamp	25	25	89	38	38	0.275


Relative Products

Extension Arm




SEA-25-19-Q-L

$\phi 25$ Al. Tube




ALT-25-3-L

Extension Arm



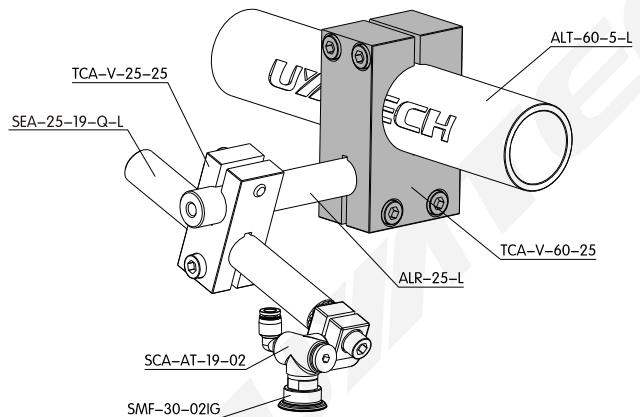
SOA-25-28-L

$\phi 60$ Al. Tube



ALT-60-5-L

Application



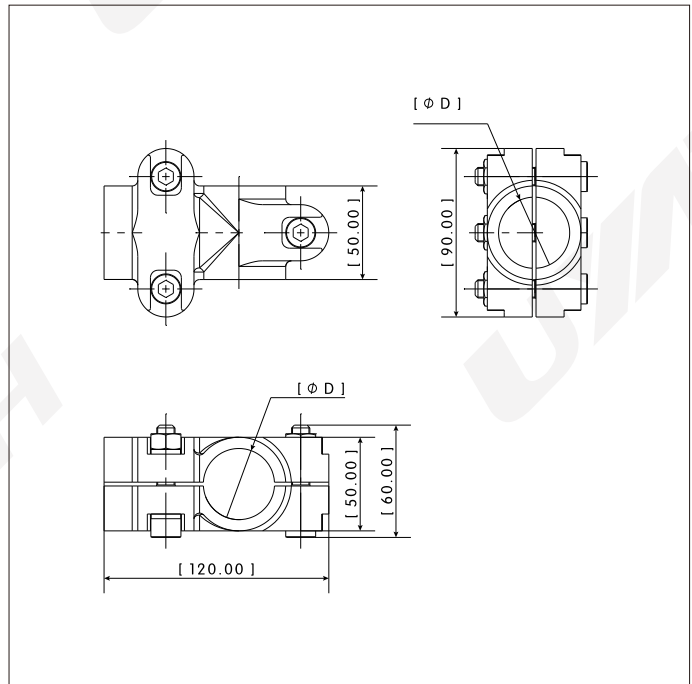
TCA-TIC | T Clamp



Features

- Material: Aluminum
- Operation Temperature: -20 C...80 C
- Surface Treatment : Anodized with sand blasting
- Function: T clamping 2 tubes

Dimensions




Ordering Information

Part No.	Ordering Code	Description	D	Weight
TCA-TIC-38-38	81238309	38-38 T clamp	38	0.60
TCA-TIC-40-40	81238310	40-40 T clamp	40	0.56


Relative Products

CF Gondola Bayonet



AGLM

T Clamp



TCA-TI-40-25

T Clamp



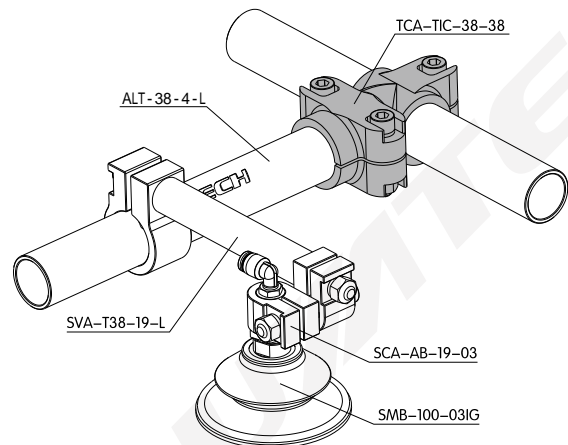
TCA-TIM

φ38 AL Tube



ALT-38-4-L

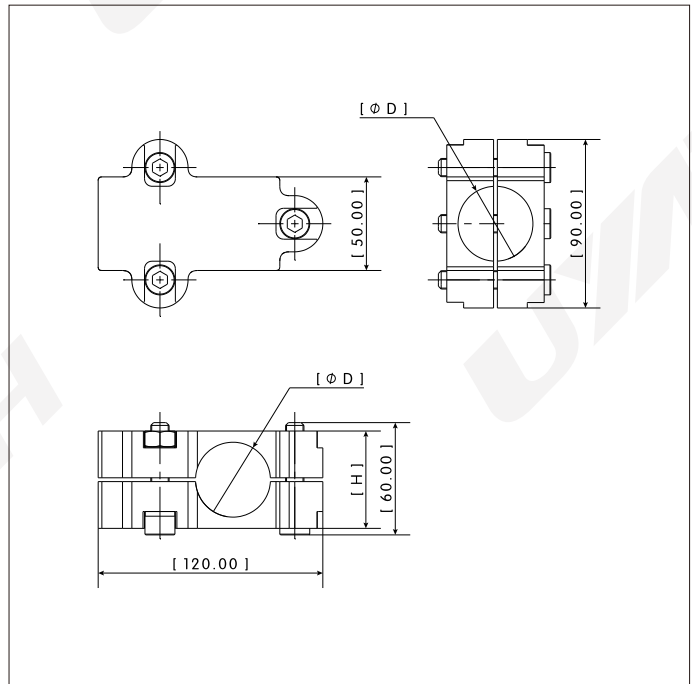
Application



TCA - TIM | T Clamp



Dimensions



Features


- Material: Aluminum
- Operation Temperature: -20 C...80 C
- Surface Treatment : Anodized with sand blasting
- Function: T clamping 2 tubes

Ordering Information

Part No.	Ordering Code	Description	D	H	Weight
TCA-TIM-38-38	81238311	38-38 T clamp	38	50	0.65
TCA-TIM-40-40	81238312	40-40 T clamp	40	52	0.65


Relative Products

CF Gondola Bayonet




AGLM

T Clamp




TCA-TI-40-25

T Clamp



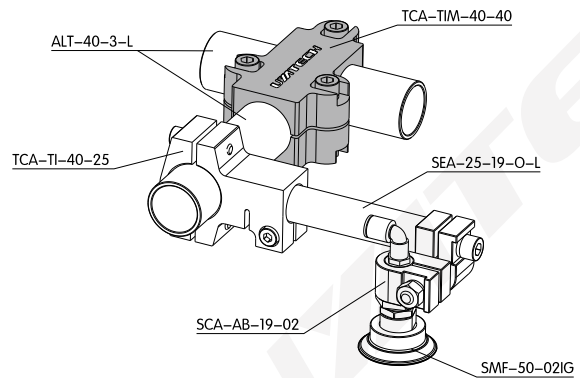
TCA-TIC

φ38 AL Tube



ALT-40-3-L

Application



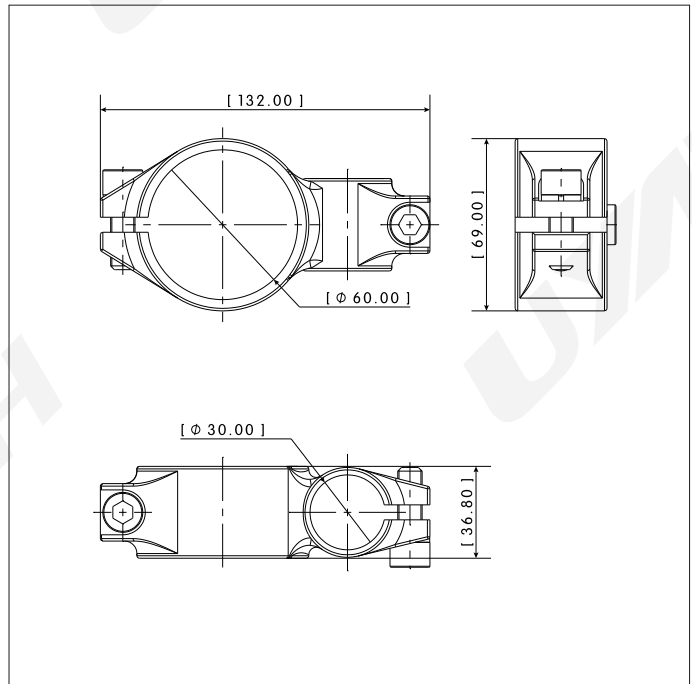
TCS-V-60-30 | Cross Clamp



Features

- Material: Steel
- Operation Temperature: -20 C...80 C
- Surface Treatment : Blackening
- Function: Cross clamping 2 tubes
- Weight: 0.54Kg

Dimensions



Ordering Information

Part No.	Ordering Code	Description
TCS-V-60-30	81238313	60-30 Cross clamp

Relative Products

Cross Clamp

TCA-VI-60-30

Extension Arm

SOA-S

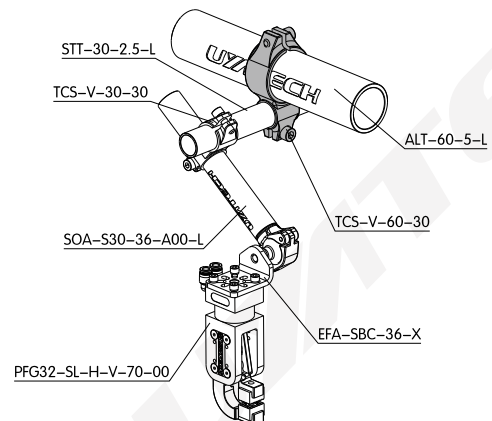
Cross Clamp

TCS-V-30-30

φ60 AL Tube

ALT-60-5-L

Application



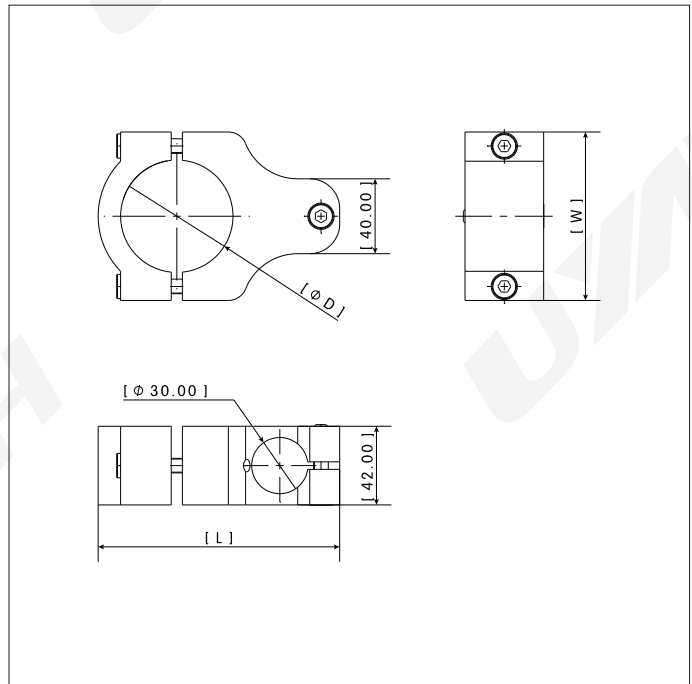
TCA-VI | Cross Clamp



Features

- Material: Aluminum
- Operation Temperature: -20 C...80 C
- Surface Treatment : Anodized with sand blasting
- Function: Cross clamping 2 tubes

Dimensions



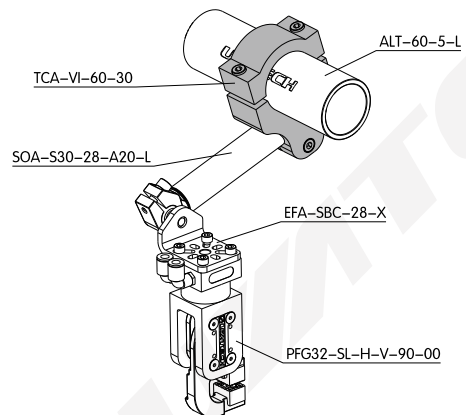
Ordering Information

Part No.	Ordering Code	Description	D	L	W	Weight
TCA-VI-60-30	81238314	60-30 Cross clamp	76	145	106	0.72
TCA-VI-76-30	81238315	76-30 Cross clamp	60	129	90	0.59

Relative Products

<p>Cross Clamp</p> <p>TCS-V-60-30</p>	<p>Cross Clamp</p> <p>TCS-V-30-30</p>
<p>Extension Arm</p> <p>SOA-S</p>	<p>φ60 AL Tube</p> <p>ALT-60-5-L</p>

Application



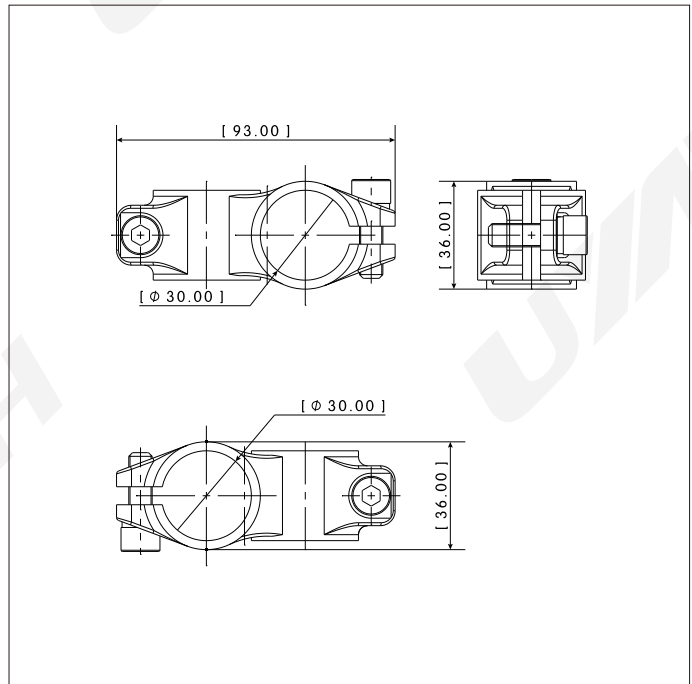
TCS-V-30-30 | Cross Clamp



Features

- Material: Steel
- Operation Temperature: -20 C...80 C
- Surface Treatment : Blackening
- Function: Cross clamping 2 tubes
- Weight: 0.54Kg

Dimensions



Ordering Information

Part No.	Ordering Code	Description
TCS-V-30-30	81238316	30-30 Cross clamp

Relative Products

Cross Clamp



TCS-V-60-30

Swivel Arm



SVA-R

Cross Clamp



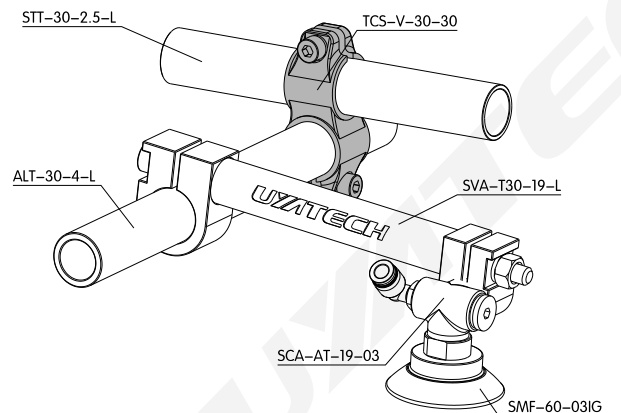
TCA-VI-60-30

Aluminum Tube

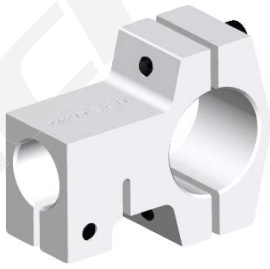


ALT-30-4-L

Application



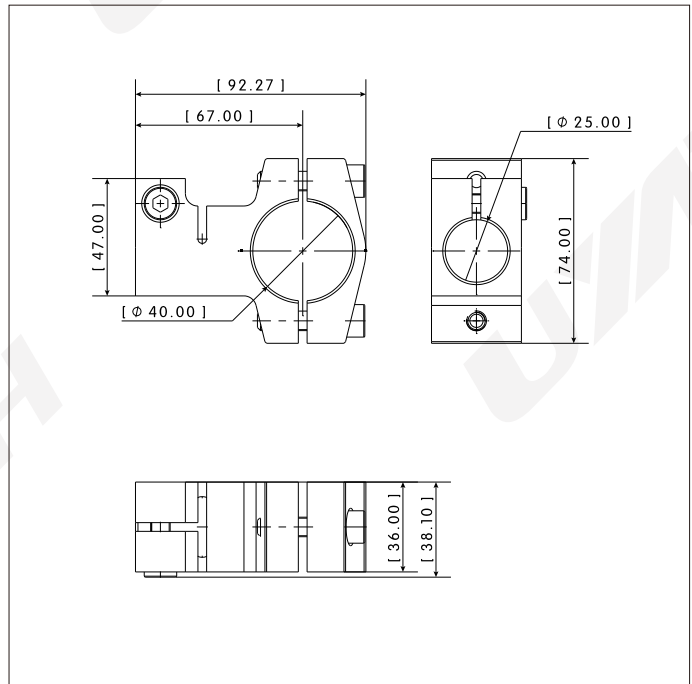
TCA-TI-40-25 | T Clamp



Features

- Material: Aluminum
- Operation Temperature: -20 C...80 C
- Surface Treatment : Anodized with sand blasting
- Function: T clamping 2 tubes
- Weight: 0.32Kg

Dimensions



Ordering Information

Part No.	Ordering Code	Description
TCA-TI-40-25	81514109	40-25 T clamp

Relative Products

Cross Clamp

TCA-VI-40-25

Extension Arm

SEA-25-19-Q-L

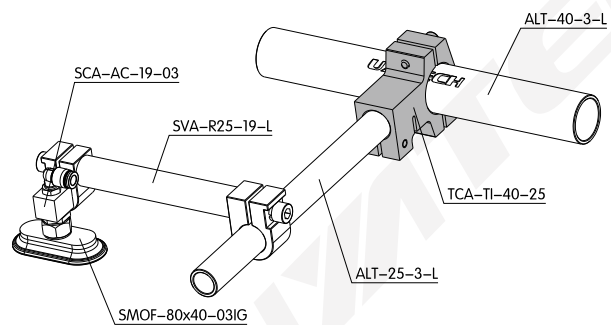
Cross Clamp

TCA-V

T Clamp

TCA-TIF-40-25

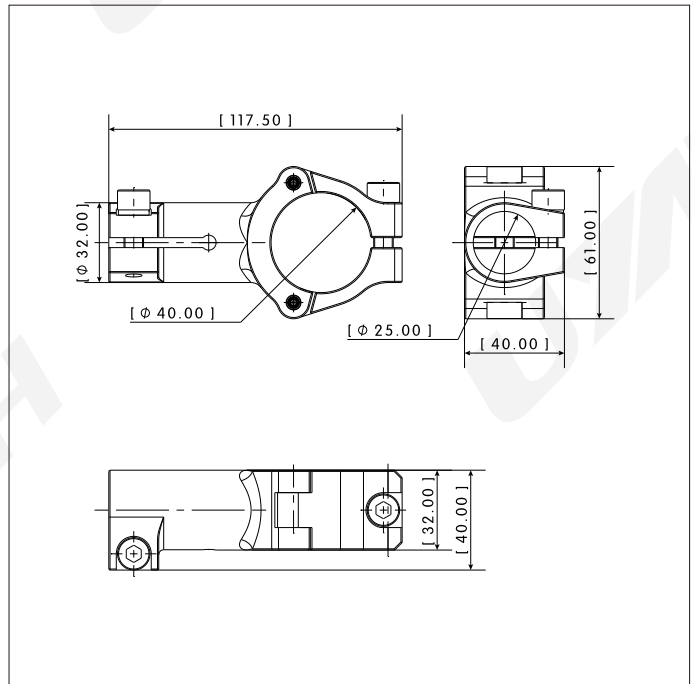
Application



TCA-TIF-40-25 | T Clamp



Dimensions



Features

- Material: Aluminum
- Operation Temperature: -20 C...80 C
- Surface Treatment : Anodized with sand blasting
- Function: T clamping 2 tubes
- Weight: 0.205Kg

Ordering Information

Part No.	Ordering Code	Description
TCA-TIF-40-25	81514111	40-25 T clamp

Relative Products

Cross Clamp

TCA-VI-40-25

Extension Arm

SEA-25-19-Q-L

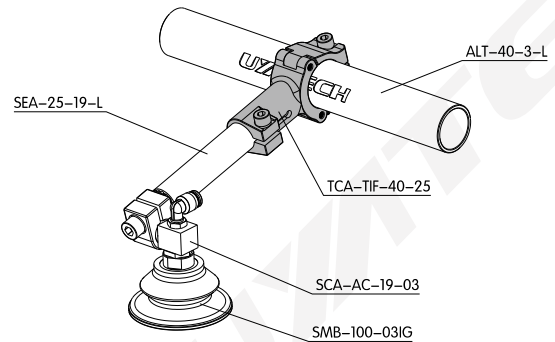
T Clamp

TCA-V

φ25 AL Tube

ALT-25-3-L

Application



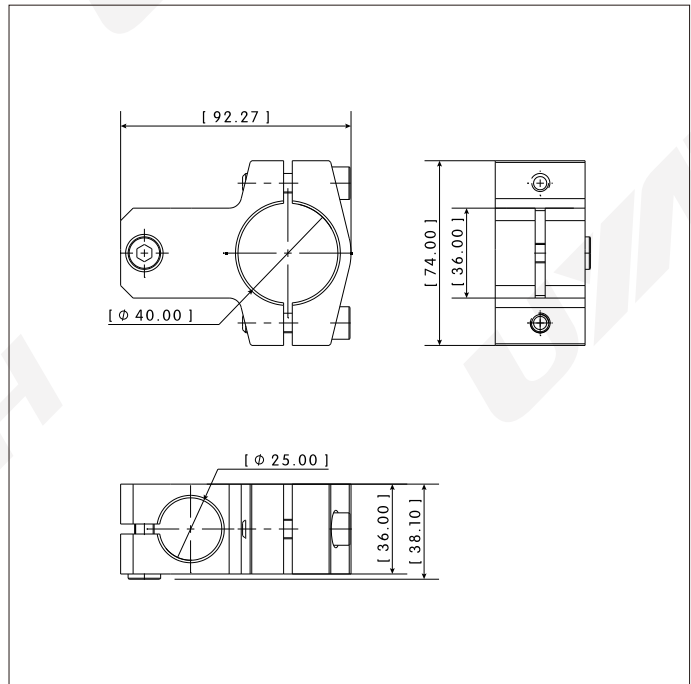
TCA-VI-40-25 | Cross Clamp



Features

- Material: Aluminum
- Operation Temperature: -20 C...80 C
- Surface Treatment : Anodized with sand blasting
- Function: Cross clamping 2 tubes
- Weight: 0.31Kg

Dimensions




Ordering Information

Part No.	Ordering Code	Description
TCA-VI-40-25	81238317	40-25 Cross clamp


Relative Products

T Clamp




TCA-TI-40-25

Extension Arm




SEA-25-19-Q-L

Cross Clamp



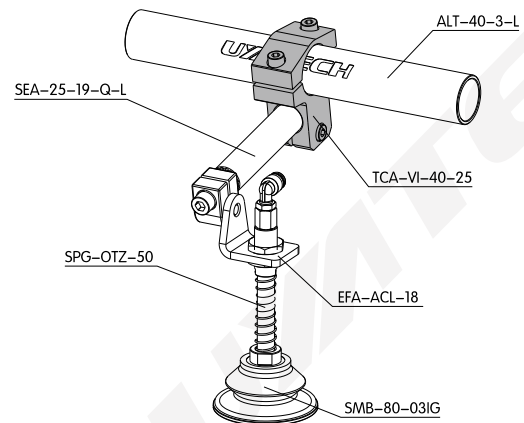
TCA-V

φ40 AL Tube

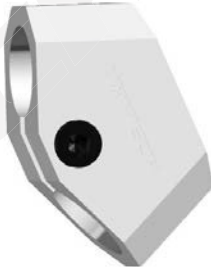


ALT-40-3-L

Application



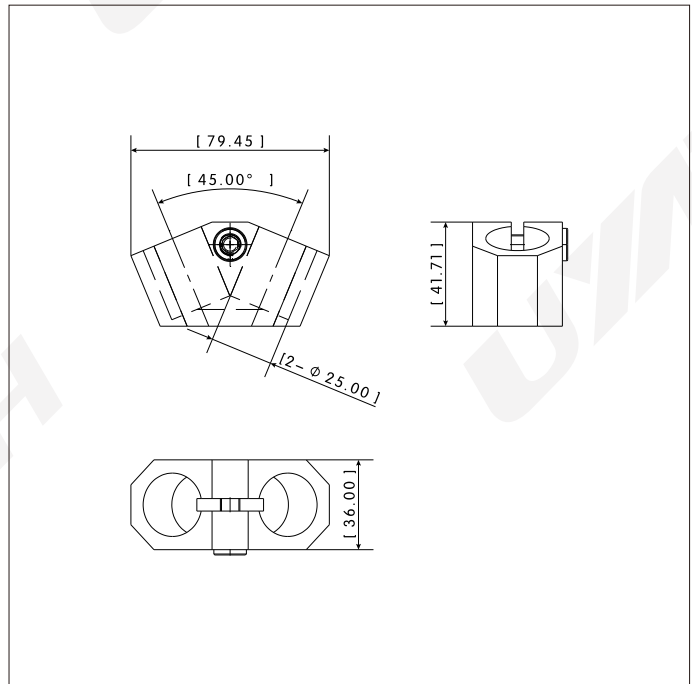
TCA-A45-25-25 | Wrist Clamp



Features

- Material: Aluminum
- Operation Temperature: -20 C...80 C
- Surface Treatment : Anodized with sand blasting
- Function: 45° wrist clamping 2 tubes
- Weight: 0.16Kg

Dimensions




Ordering Information

Part No.	Ordering Code	Description
TCA-A45-25-25	81212101	25-25 Wrist clamp with 45°angle


Relative Products

Swivel Arm



SVA-R

φ25 Al. Tube



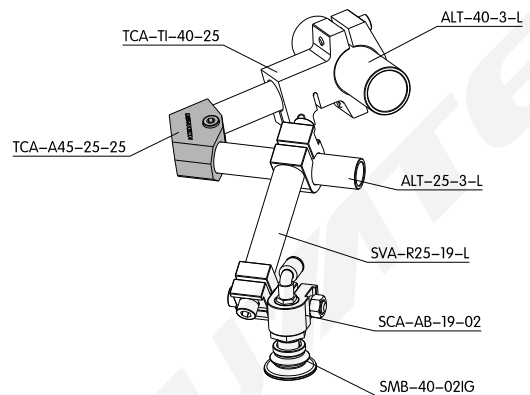
ALT-25-3-L

Wrist Clamp



TCA-A90-25-25

Application



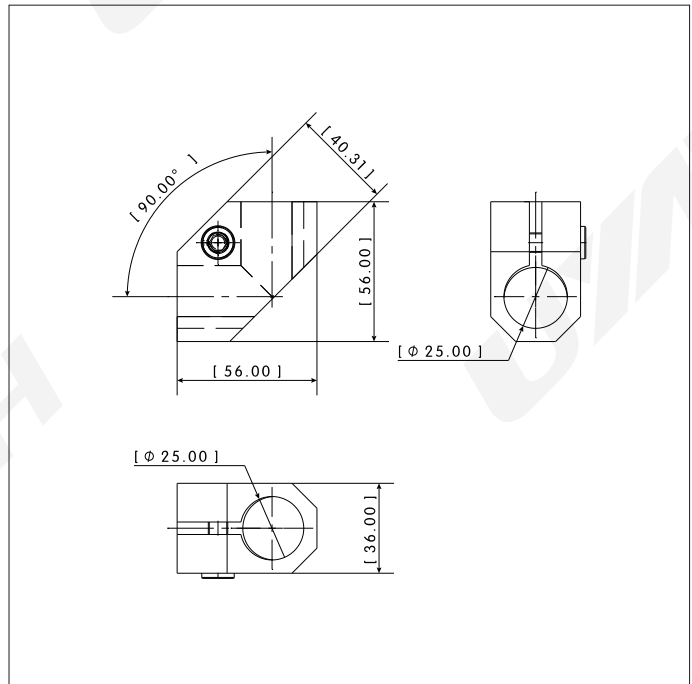
TCA-A90-25-25 | Wrist Clamp



Features

- Material: Aluminum
- Operation Temperature: -20 C...80 C
- Surface Treatment : Anodized with sand blasting
- Function: 45° wrist clamping 2 tubes
- Weight: 0.13Kg

Dimensions



Ordering Information

Part No.	Ordering Code	Description
TCA-A90-25-25	81212102	25-25 Wrist clamp with 90°angle

Relative Products

Swivel Arm

SVA-R

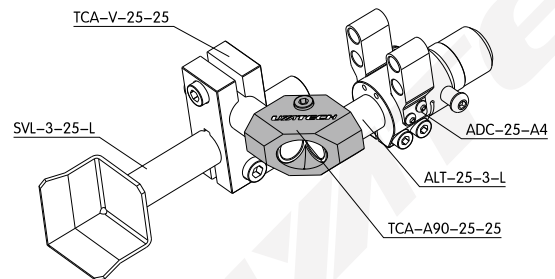
φ25 Al. Tube

ALT-25-3-L

Wrist Clamp

TCA-A45-25-25

Application



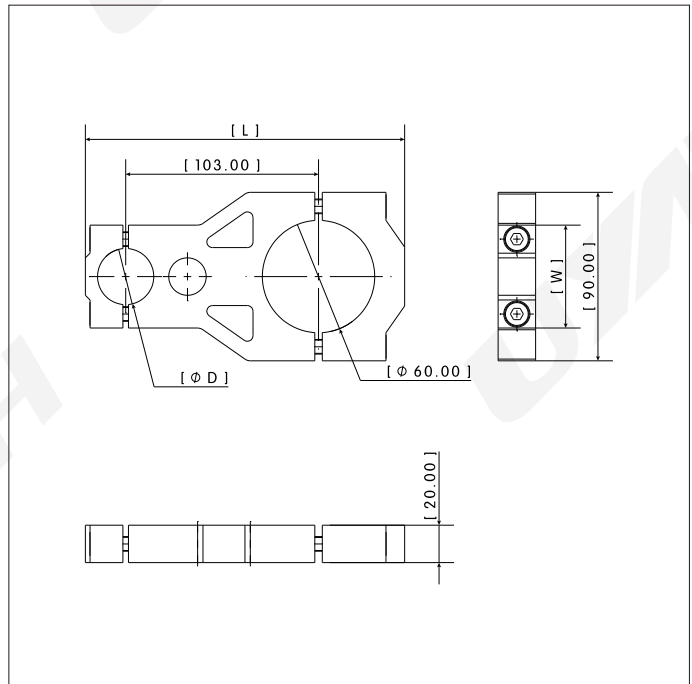
TCA-HI | Parallel Clamp



Features

- Material: Aluminum
- Operation Temperature: -20 C...80 C
- Surface Treatment : Anodized with sand blasting
- Function: Parallel clamping 2 tubes

Dimensions



Ordering Information

Part No.	Ordering Code	D	L	W	Weight
TCA-HI-60-30	81214201	30	170.5	55	0.47
TCA-HI-60-40	81214202	40	175.5	65	0.49

Relative Products

Parallel Clamp

TCA-H-40-25

φ30 Al. Tube

ALT-30-4-L

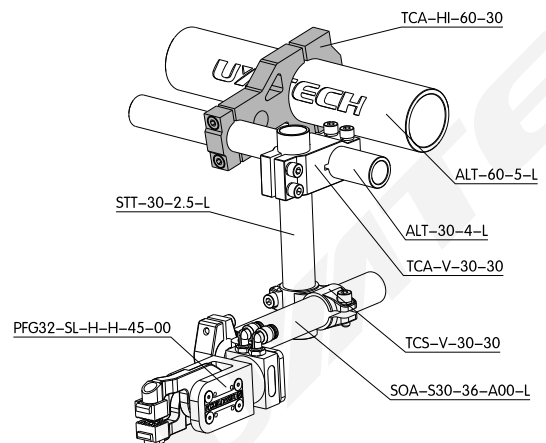
Parallel Clamp

TCA-SDS...

φ60 Al. Tube

ALT-60-5-L

Application



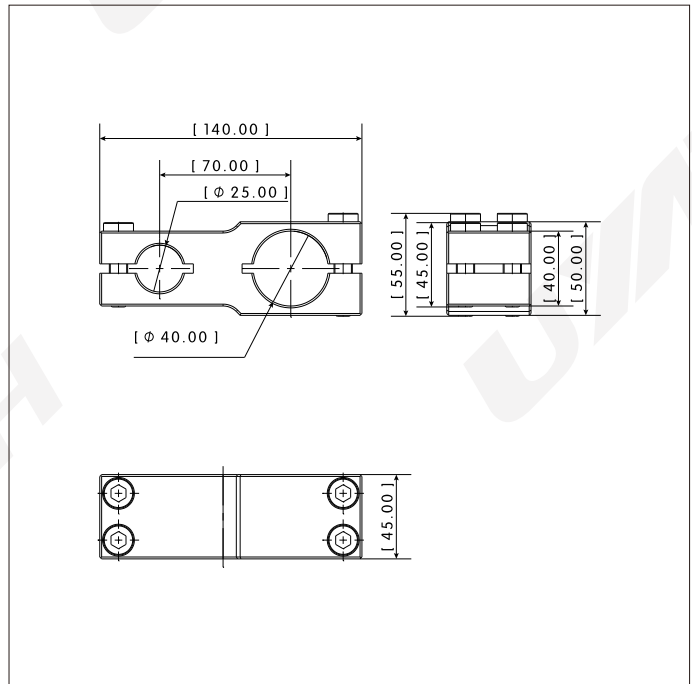
TCA-H-40-25 | Parallel Clamp



Features

- Material: Aluminum
- Operation Temperature: -20 C...80 C
- Surface Treatment : Anodized with sand blasting
- Function: Parallel clamping 2 tubes
- Weight: 0.63Kg





Dimensions



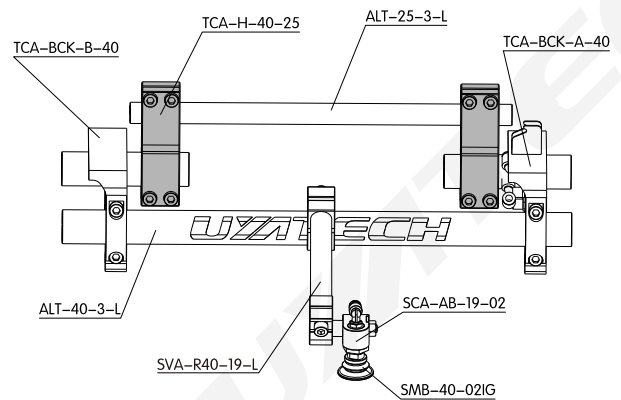
Ordering Information

Part No.	Ordering Code	Description
TCA-H-40-25	81214203	40-25 Parallel clamp

Relative Products

<p>Parallel Clamp</p>  <p>TCA-H</p>	<p>Parallel Clamp</p>  <p>TCA-SDS...</p>
<p>Parallel Clamp</p>  <p>TCA-HI-60-30</p>	<p>$\phi 25$ Al. Tube</p>  <p>ALT-25-3-L</p>

Application



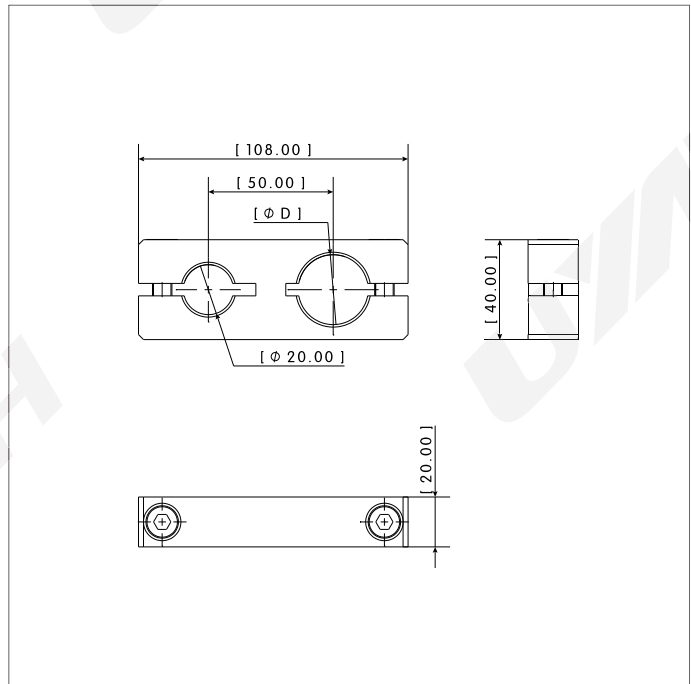
TCA-H | Parallel Clamp



Features

- Material: Aluminum
- Operation Temperature: -20 C...80 C
- Surface Treatment : Anodized with sand blasting
- Function: Parallel clamping 2 tubes

Dimensions



Ordering Information

Part No.	Ordering Code	Description	D	Weight
TCA-H-28-20	81214204	28-20 Parallel clamp	28	0.20
TCA-H-30-20	81214205	30-20 Parallel clamp	30	0.19

Relative Products

Two Sides Shovel



SVL-2

φ30 Steel Tube



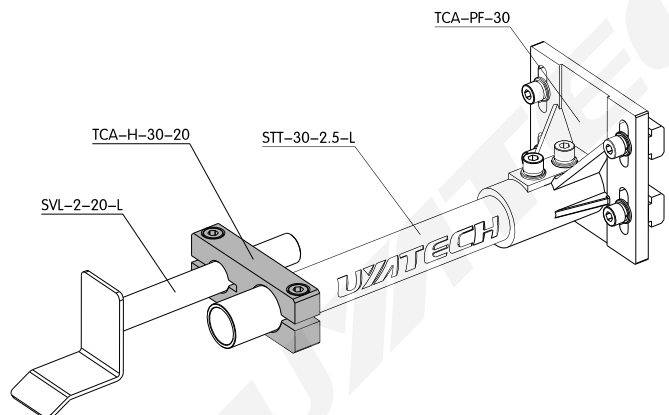
STT-30-2.5-L

Parallel Clamp



TCA-SDS...

Application



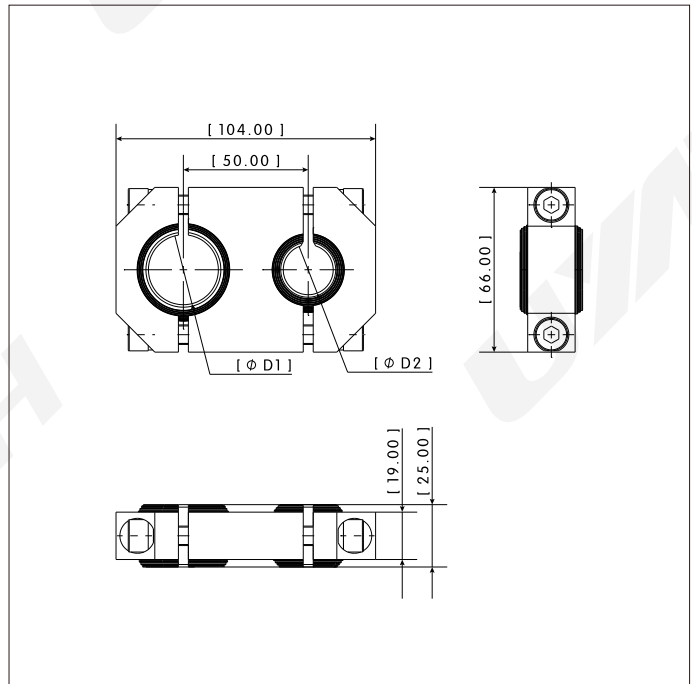
TCA-HDS | Parallel Clamp



Features

Material: Aluminum, steel
 Operation Temperature: -20 C...80 C
 Surface Treatment : Anodized with sand blasting, blackening
 Function: Parallel clamping 2 tubes, each has 15° adjustment

Dimensions



Ordering Information

Part No.	Ordering Code	D1	D2	Weight
TCA-HDS-25-25	81214206	25	25	0.40
TCA-HDS-28-20	81214207	28	20	0.44
TCA-HDS-28-28	81214208	28	28	0.45
TCA-HDS-30-25	81214209	30	25	0.42
TCA-HDS-30-30	81214210	30	30	0.43

Relative Products

Cross Clamp

TCA-VDS...

Finger Gripper Adapter

EFA-PFG

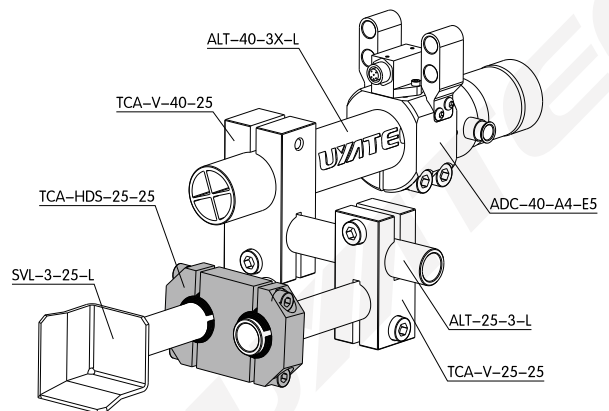
Parallel Clamp

TCA-SDS...

φ25 AL Tube

ALT-25-3-L

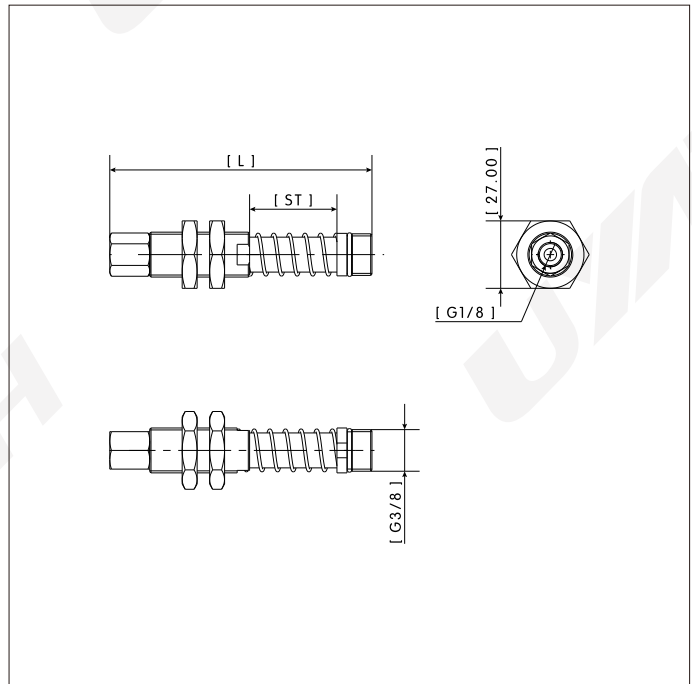
Application



SPG-OT | Spring Plungers



Dimensions



Features

- Material: Steel, stainless steel
- Operation Temperature: -20 C...80 C
- Surface Treatment : Zinc anodized
- Function: Assembly with suction cup for compensating in destack process

Ordering Information

Part No.	Ordering Code	Description	L	Stroke	Weight
SPG-OT-25	74714101	25mm Stroke spring plunger (rotating)	105	25	0.18
SPG-OT-50	74714102	50mm Stroke spring plunger (rotating)	135	50	0.20
SPG-OT-75	74714103	75mm Stroke spring plunger (rotating)	182	75	0.24
SPG-OT-100	74714104	100mm Stroke spring plunger (rotating)	200	100	0.26
SPG-OTZ-25	74714105	25mm Stroke spring plunger (no-rotating)	105	25	0.18
SPG-OTZ-50	74714106	50mm Stroke spring plunger (no-rotating)	135	50	0.20
SPG-OTZ-75	74714107	75mm Stroke spring plunger (no-rotating)	182	75	0.24
SPG-OTZ-100	74714108	100mm Stroke spring plunger (no-rotating)	200	100	0.26

Relative Products

Spring Plunger

SPG-AB

Apple Core Connector

EFA-ACL

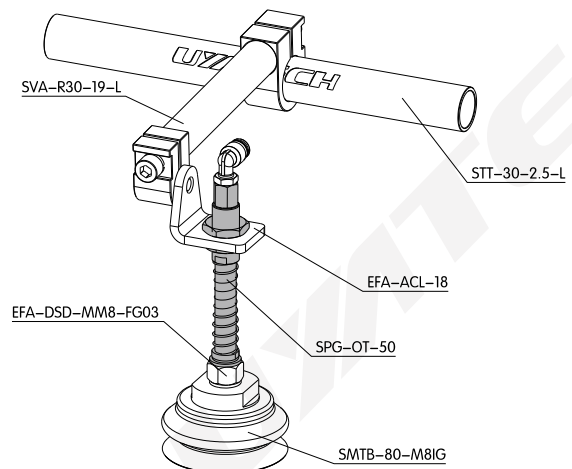
Spring Plunger Bracket

EFA-DBK

Bellow Cup

SMTB

Application



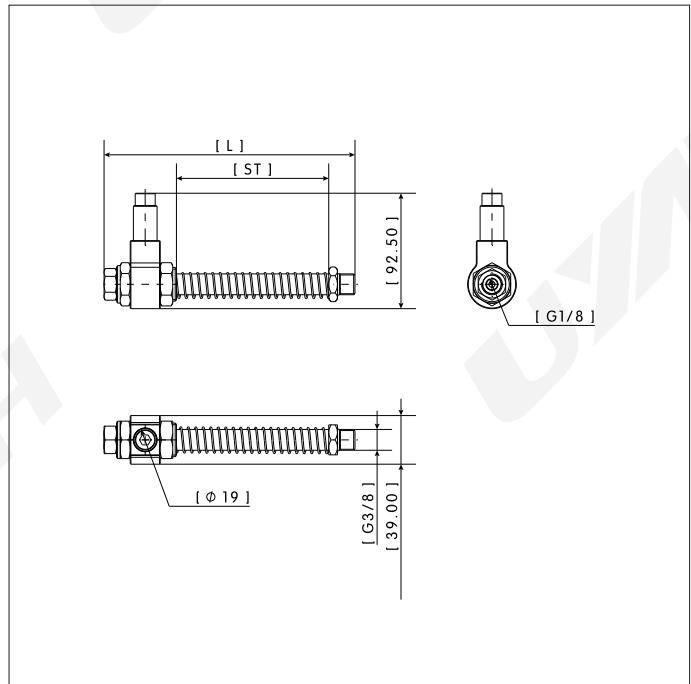
SPG-AB | Spring Plunger



Features

- Material: Aluminum, stainless steel
- Operation Temperature: -20 C...80 C
- Surface Treatment : Anodized with sandblasting
- Function: Assembly with suction cup for compensating in destack process

Dimensions



Ordering Information

Part No.	Ordering Code	Description	L	Stroke	Weight
SPG-AB-75	74714109	75mm Stroke spring plunger (rotating)	201	75	0.28
SPG-AB-100	74714110	100mm Stroke spring plunger (rotating)	226	100	0.30
SPG-ABZ-75	74714111	75mm Stroke spring plunger (no-rotating)	201	75	0.27
SPG-ABZ-100	74714112	100mm Stroke spring plunger (no-rotating)	226	100	0.29


Relative Products

Spring Plunger



SPG-0T

Apple Core Connector



EFA-ACL

Swivel Arm



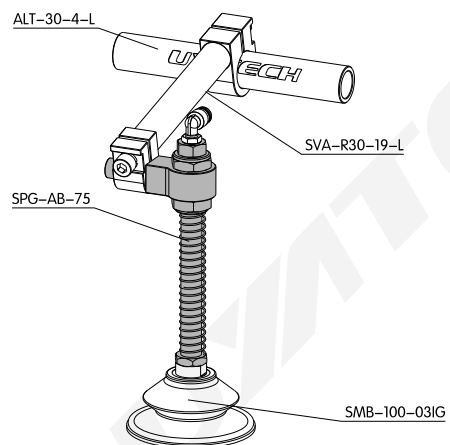
SVA-R

Bellow Cup



SMB

Application



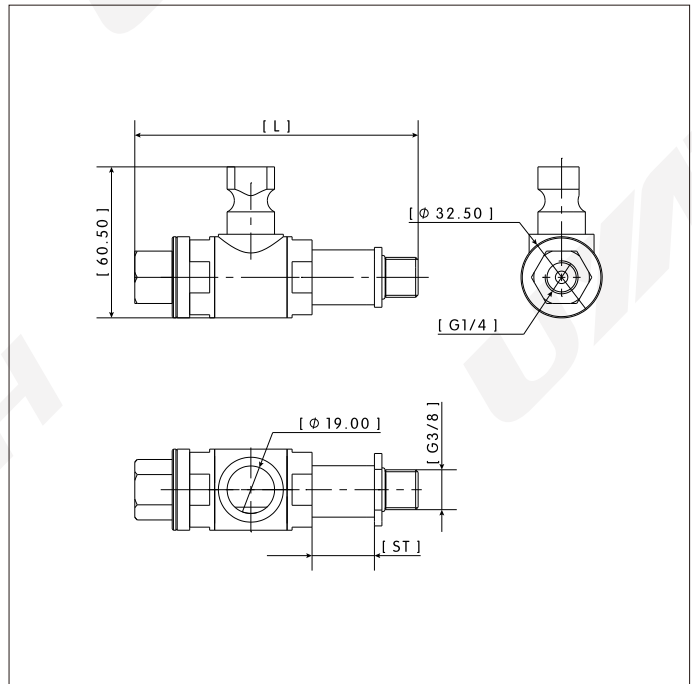
SPG-IN | Spring Plunger



Features

- Material: Aluminum, stainless steel, brass
- Operation Temperature: -20 C...80 C
- Surface Treatment : Anodized with sandblasting
- Function: Assembly with suction cup for compensating in destack process

Dimensions



Ordering Information

Part No.	Ordering Code	Description	L	Stroke	Weight
SPG-IN-25	74714113	25mm Stroke spring plunger (rotating)	113.5	25	0.30
SPG-IN-50	74714114	50mm Stroke spring plunger (rotating)	174.5	50	0.37
SPG-IN-75	74714115	75mm Stroke spring plunger (rotating)	223.5	75	0.43

Relative Products

Spring Plunger

SPG-0T

Apple Core Connector

EFA-ACL

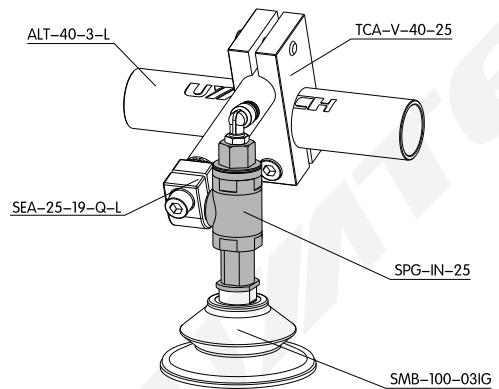
Swivel Arm

SVA-R

Bellow Cup

SMB

Application



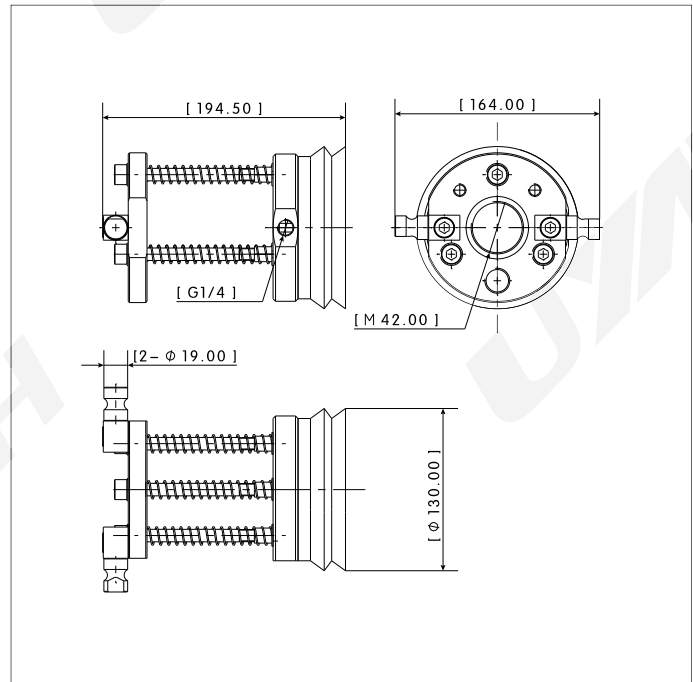
DBB-ACA | DBD Bracket (with cup)



Features

Material: Aluminum, steel, stainless steel, NBR, brass
 Operation Temperature: -20 C...80 C
 Surface Treatment : Anodized with sandblasting, blackening
 Function: Assembly with DBD sensor to detect double blank
 Weight: 1.48Kg

Dimensions



Ordering Information

Part No.	Ordering Code	Description
DBB-ACA	31222201	DBD Bracket (with cup)

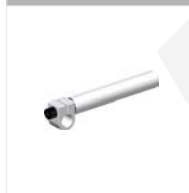
Relative Products

DBD Bracket (with cup)



DBB-OTA

Extension Arm



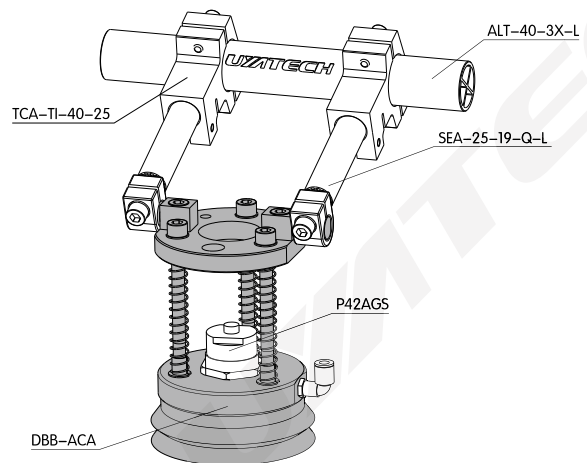
SEA-25-19-Q-L

Double Blank Sensor



P42AGS / PW42AGS

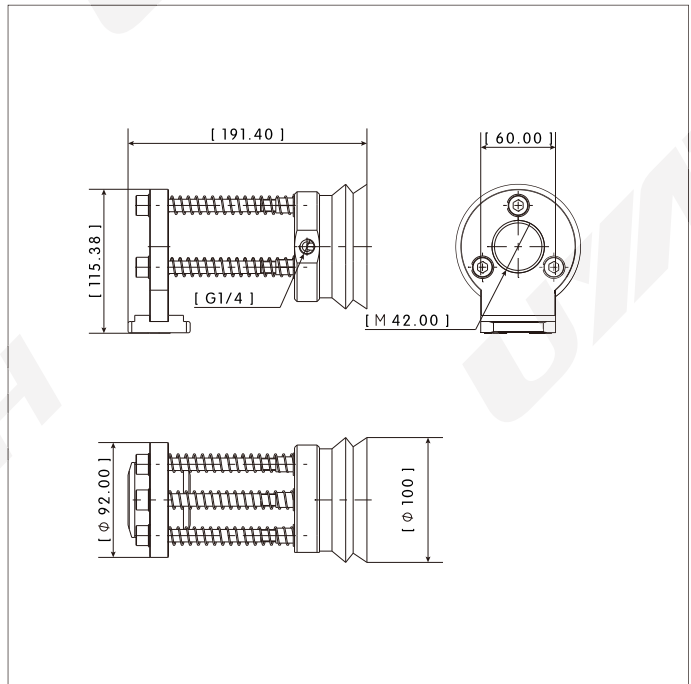
Application



DBB-OTA | DBD Bracket (with cup)



Dimensions



Features

Material: Aluminum, steel, stainless steel, NBR, brass
 Operation Temperature: -20 C...80 C
 Surface Treatment : Anodized with sandblasting, blackening
 Function: Assembly with DBD sensor to detect double blank
 Weight: 1.10Kg

Ordering Information

Part No.	Ordering Code	Description
DBB-OTA	31222202	DBD Bracket (with cup)

Relative Products

DBD Bracket (with cup)



DBB-ACA

Swivel Arm



SVA-R

Double Blank Sensor



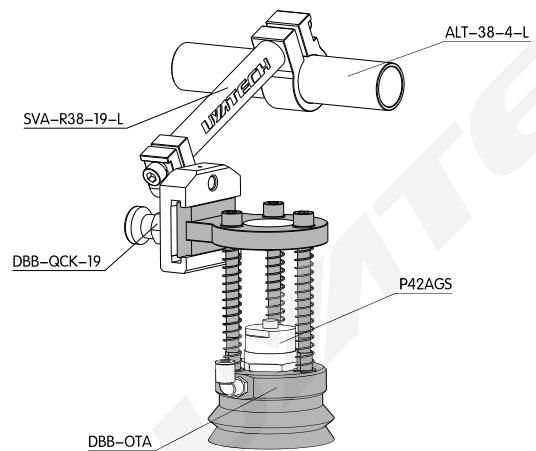
P42AGS / PW42AGS

DBD Bracket Changer



DBB-QCK-19

Application



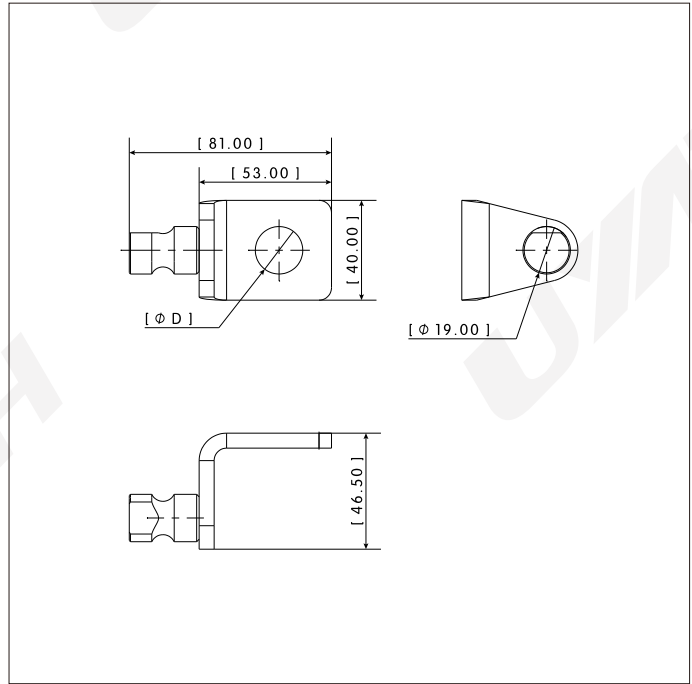
EFA-ACL | Apple Core L Plate



Features

- Material: Steel
- Operation Temperature: -20 C...80 C
- Surface Treatment : Blackening
- Function: Mounting with spring plunger or proximity sensor

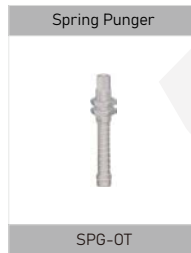
Dimensions



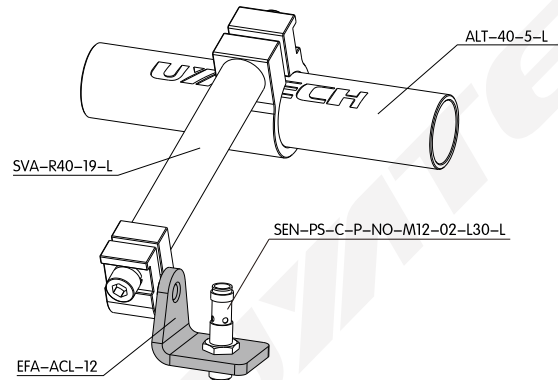
Ordering Information

Part No.	Ordering Code	Description	D	Weight
EFA-ACL-12	32332101	φ12 Apple core L plate	12	0.20
EFA-ACL-18	32332102	φ18 Apple core L plate	18	0.19
EFA-ACL-30	32332103	φ30 Apple core L plate	30	0.17

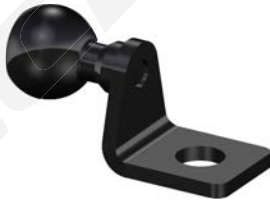
Relative Products



Application



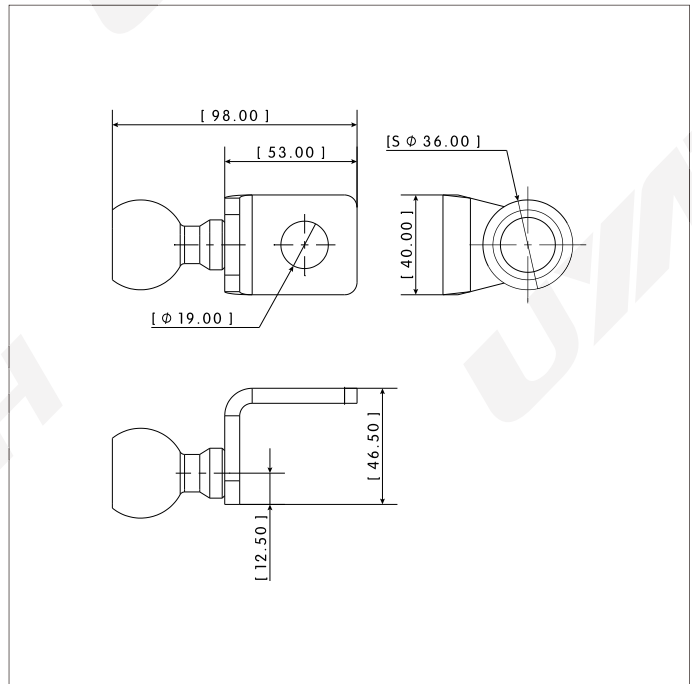
EFA-SBC-36-18 | Ball L Plate



Features

- Material: Steel
- Operation Temperature: -20 C...80 C
- Surface Treatment : Blackening
- Function: Mounting with spring plunger or proximity sensor
- Weight: 0.28Kg

Dimensions



Ordering Information

Part No.	Ordering Code	Description
EFA-SBC-36-18	32332107	Ball L Plate

Relative Products

Spring Plunger

SPG-0T

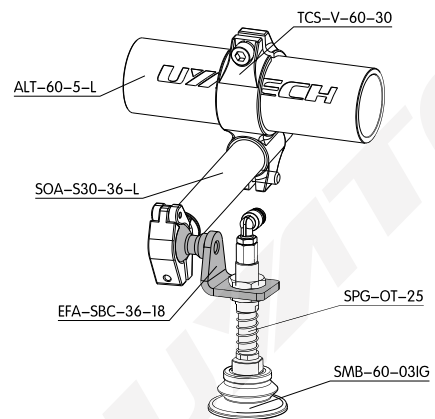
Proximity Sensor

SEN-PS-C...

Extension Arm

SOA-S

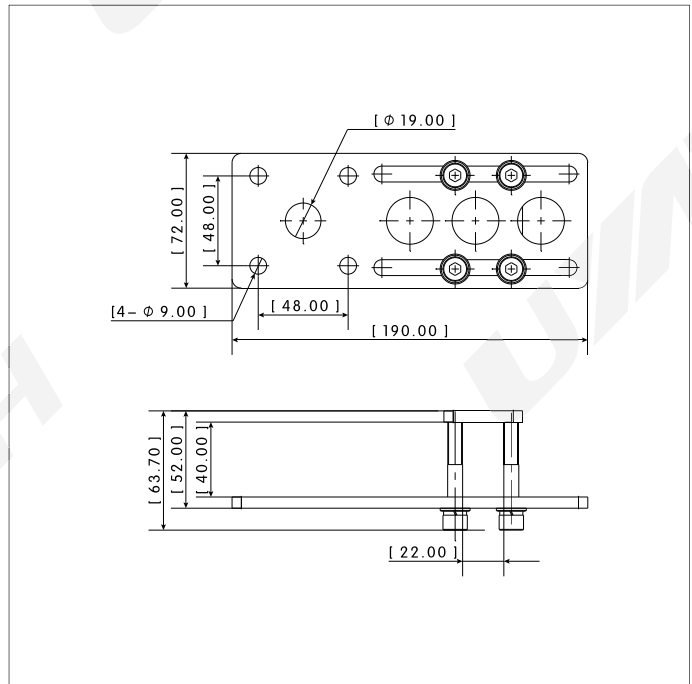
Application



EFA-DBK | Spring Plunger Bracket



Dimensions



Features

- Material: Steel
- Operation Temperature: -20 C...80 C
- Surface Treatment : Blackening
- Function: Mounting with spring plunger
- Weight: 0.71Kg

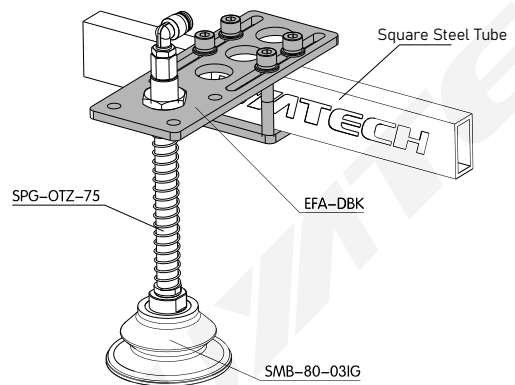
Ordering Information

Part No.	Ordering Code	Description
EFA-DBK	32332117	Spring plunger bracket

Relative Products

<p>Spring Plunger</p> <p>SPG-0T</p>	<p>Destacking Frame</p> <p>FRM-W-L</p>
<p>Frame Changer</p> <p>FRM-BSE</p>	<p>Bellow Cup</p> <p>SMB</p>

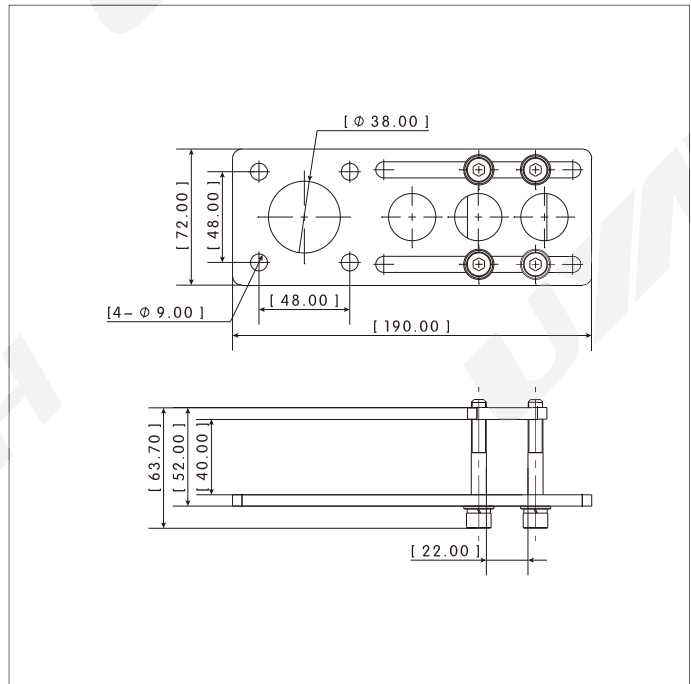
Application



EFA-DBC | Cylinder Bracket



Dimensions



Features

- Material: Steel
- Operation Temperature: -20 C...80 C
- Surface Treatment : Blackening
- Function: Mounting with destacking cylinder
- Weight: 0.71Kg

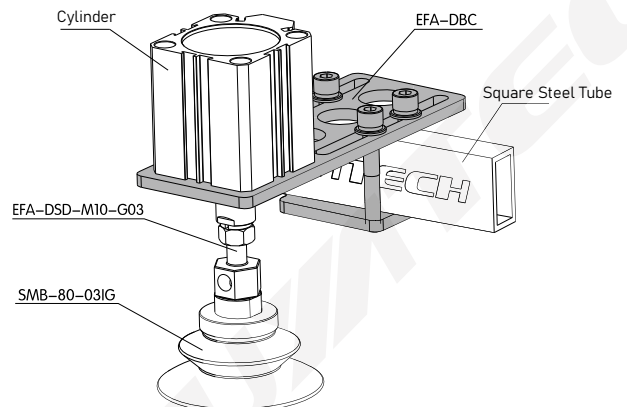
Ordering Information

Part No.	Ordering Code	Description
EFA-DBC	32332128	Cylinder bracket

Relative Products



Application



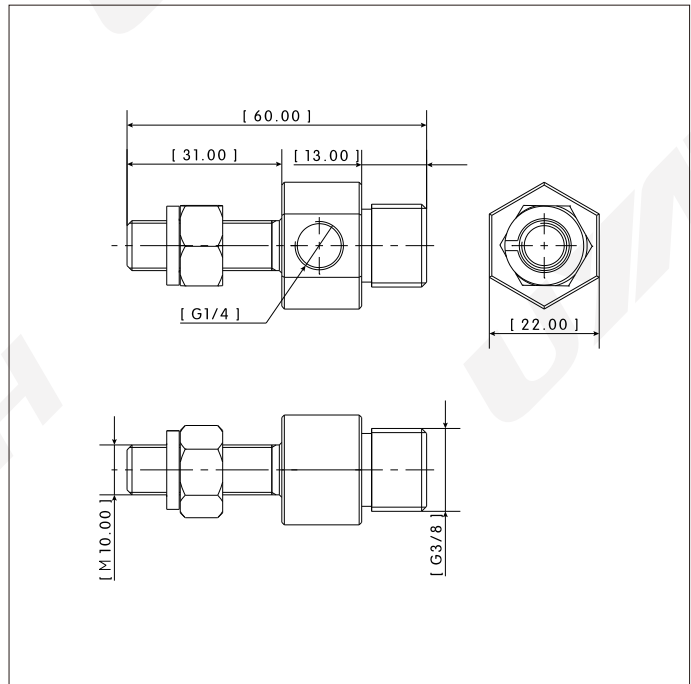
EFA-DSD-MM10-MG03 | Transition Joint



Features

- Material: Steel
- Operation Temperature: -20 C...80 C
- Surface Treatment : Blackening
- Function: Transition connecting cylinder and suction cup
- Weight: 0.09Kg

Dimensions



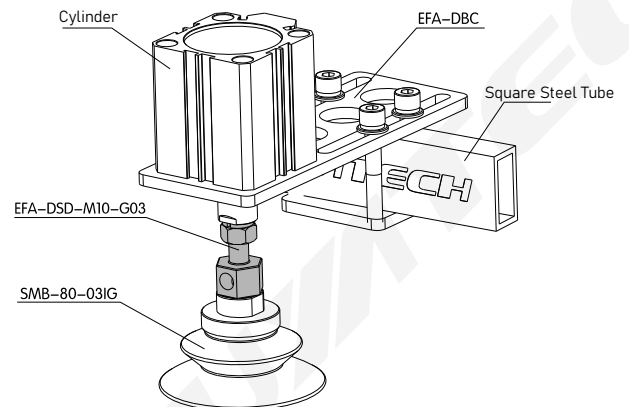
Ordering Information

Part No.	Ordering Code	Description
EFA-DSD-MM10-MG03	32332118	Transition Joint

Relative Products



Application



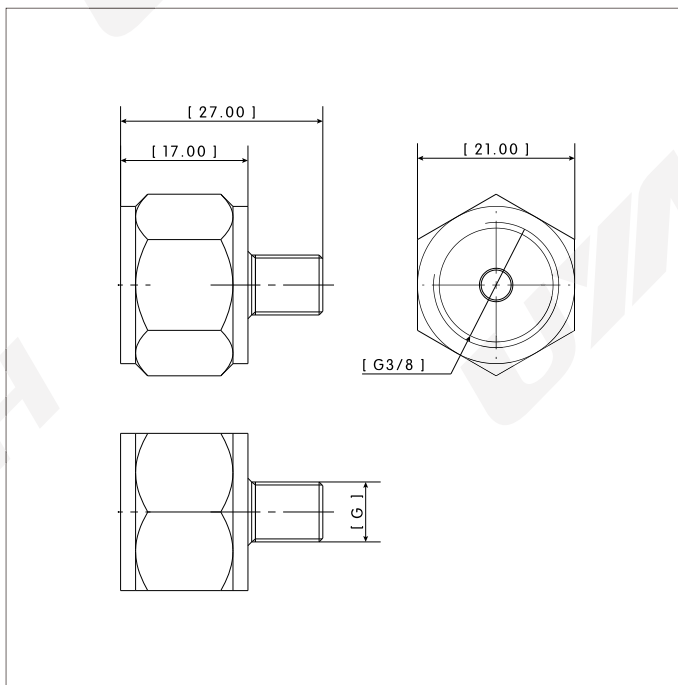
EFA-DSD | Suction Cup Joint



Features

- Material: Steel
- Operation Temperature: -20 C...80 C
- Surface Treatment : Zinc anodized
- Function: Transition connecting cylinder and suction cup

Dimensions



Ordering Information

Part No.	Ordering Code	Description	G	Weight
EFA-DSD-MM8-FG03	32332119	M8 Suction cup joint	M8*1.25-M	0.035
EFA-DSD-MM10-FG03	32332120	M10 Suction cup joint	M10*1.5-M	0.036
EFA-DSD-MM12-FG03	32332121	M12 Suction cup joint	M12*1.75-M	0.038
EFA-DSD-MM16-FG03	32332122	M16 Suction cup joint	M16*1.5-M	0.045
EFA-DSD-MG02-FG03	32332127	G1/4 Suction cup joint	G1/4-M	0.040

Relative Products

Spring Plunger

SPG-OT

Spring Plunger

SPG-IN

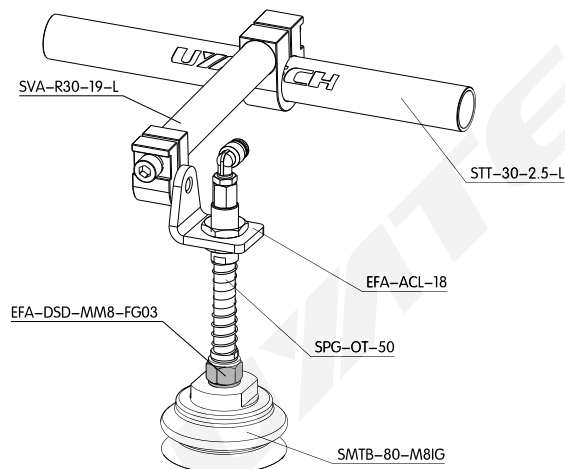
Spring Plunger

SPG-AB

Bellow Cup

SMTB

Application



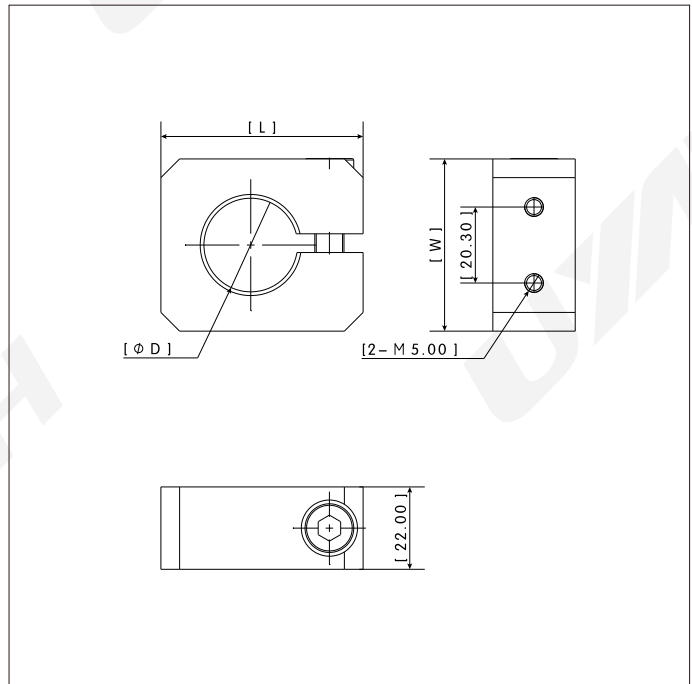
EFA-SVL | Sensor Bracket



Features

- Material: Aluminum
- Operation Temperature: -20 C...80 C
- Surface Treatment : Anodized with sandblasting
- Function: Assembly on transfer shovel for sensor mounting

Dimensions



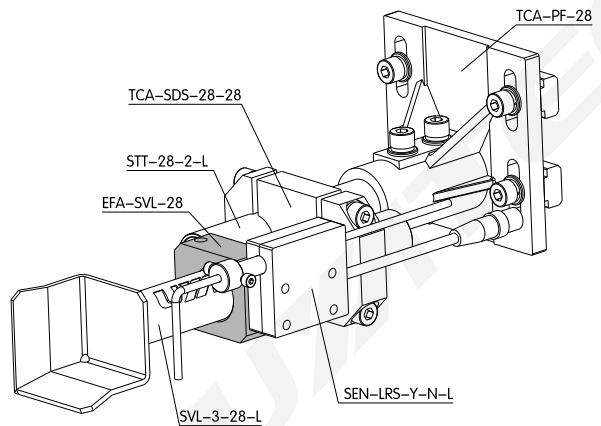
Ordering Information

Part No.	Ordering Code	Description	D	L	W	Weight
EFA-SVL-20	32332123	Assembly on φ20 tube	20	50	38	0.10
EFA-SVL-25	32332124	Assembly on φ25 tube	25	54	46	0.12
EFA-SVL-28	32332125	Assembly on φ28 tube	28	54	46	0.12
EFA-SVL-30	32332126	Assembly on φ30 tube	30	54	46	0.11

Relative Products



Application



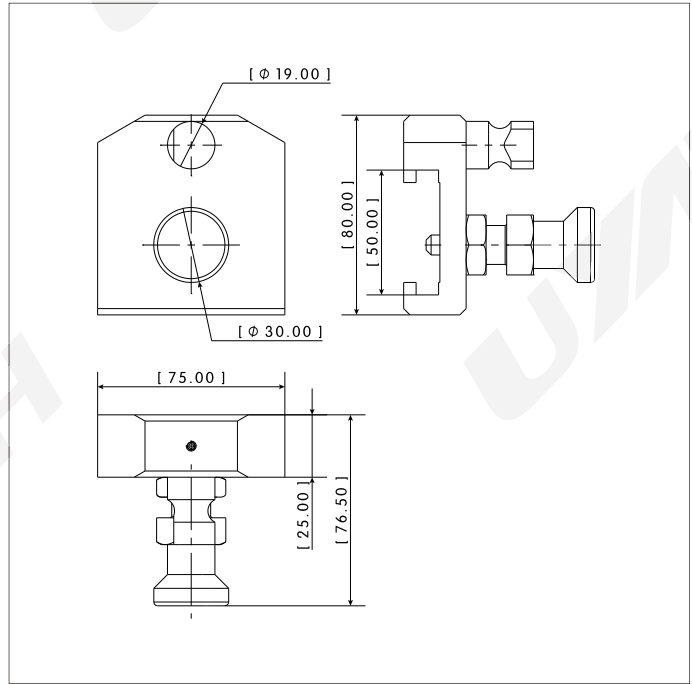
DBB-QCK-19 | DBD Bracket Changer



Features

- Material: Aluminum, steel
- Operation Temperature: -20 C...80 C
- Surface Treatment : Anodized with sandblasting, blackening
- Function: Quick changer for double blank bracket
- Weight: 0.5Kg

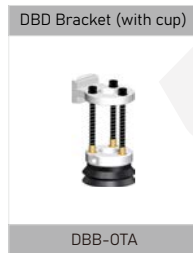
Dimensions



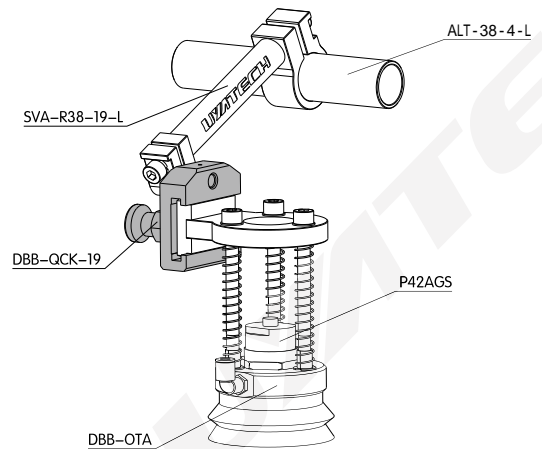
Ordering Information

Part No.	Ordering Code	Description
DBB-QCK-19	31222203	DBD bracket changer

Relative Products



Application



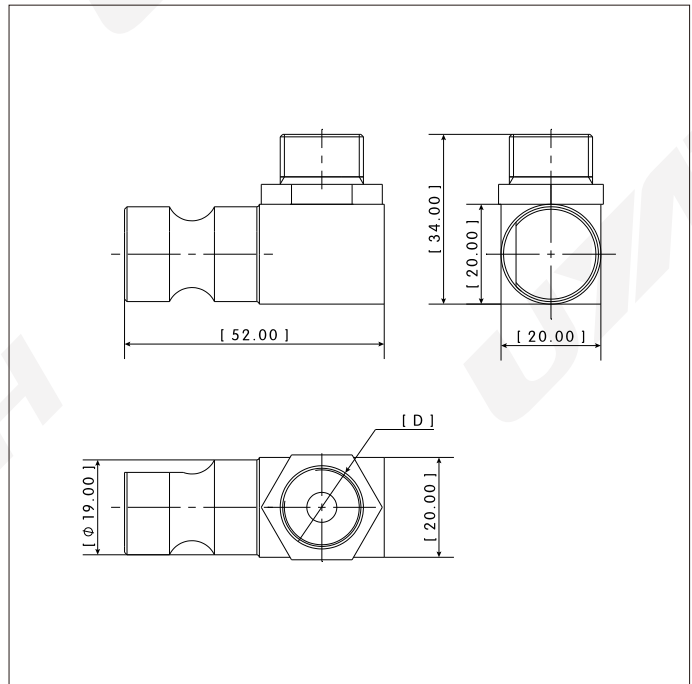
SCA-AC | Suction Cup Adapter



Features

Material: Aluminum, brass
 Operation Temperature: -20 C...80 C
 Surface Treatment : Anodized with sandblasting
 Function: Suction cup adapter

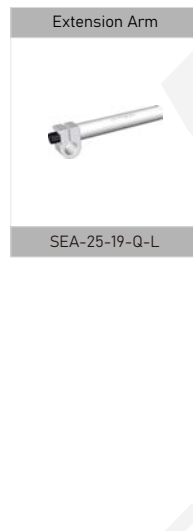
Dimensions



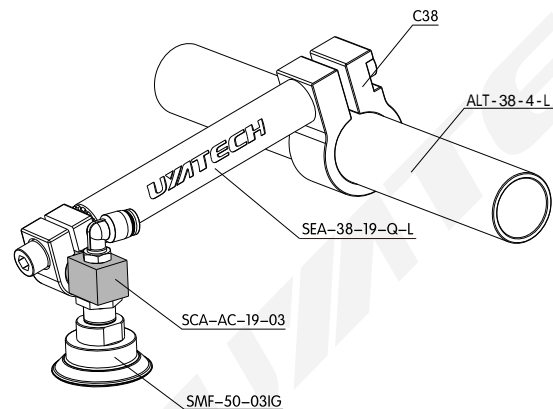
Ordering Information

Part No.	Ordering Code	Description	D	Weight
SCA-AC-19-02	74232101	Suction cup adapter	G1/4	0.07
SCA-AC-19-03	74232102	Suction cup adapter	G3/8	0.08

Relative Products



Application



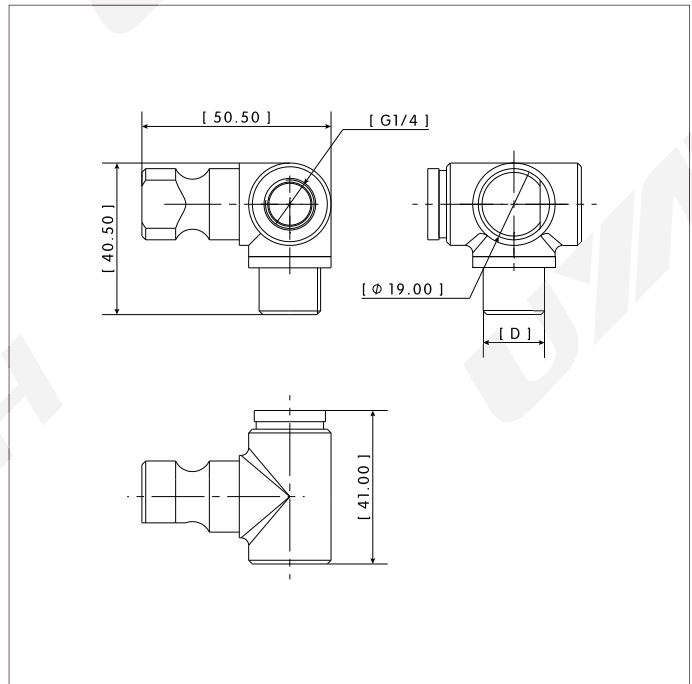
SCA-AT | Suction Cup Adapter



Features

- Material: Aluminum
- Operation Temperature: -20 C...80 C
- Surface Treatment : Anodized with sandblasting
- Function: Suction cup adapter

Dimensions



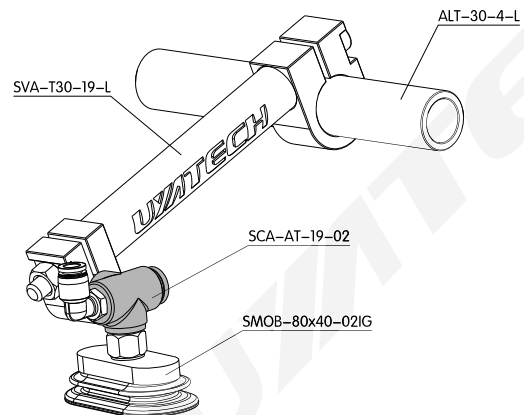
Ordering Information

Part No.	Ordering Code	Description	D	Weight
SCA-AT-19-02	74232103	Suction cup adapter	G1/4	0.08
SCA-AT-19-03	74232104	Suction cup adapter	G3/8	0.08

Relative Products



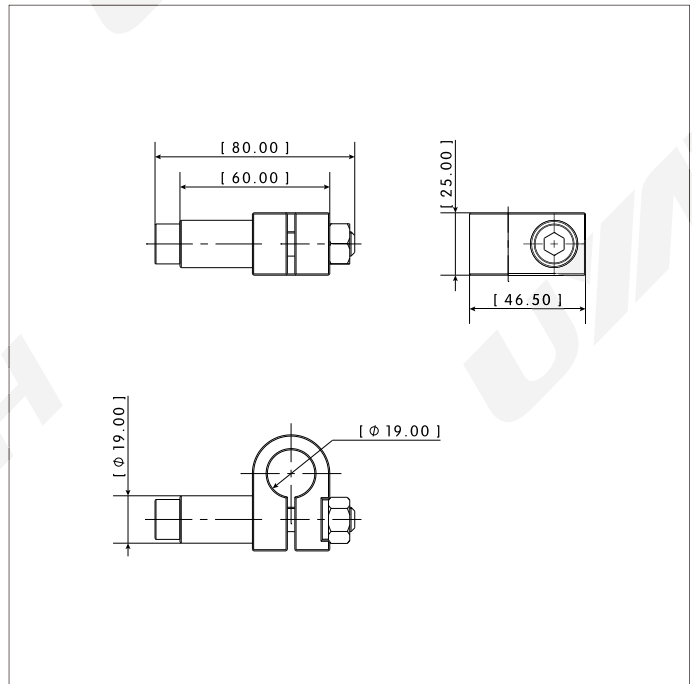
Application



SCA-AB-19 | Adapter Clamp



Dimensions



Features

- Material: Aluminum
- Operation Temperature: -20 C...80 C
- Surface Treatment : Anodized with sandblasting
- Function: Suction cup adapter
- Weight: 0.14Kg

Ordering Information

Part No.	Ordering Code	Description
SCA-AB-19	74232105	Adapter clamp

Relative Products

Swivel Arm

SVA-T

Bellow Cup

SMB

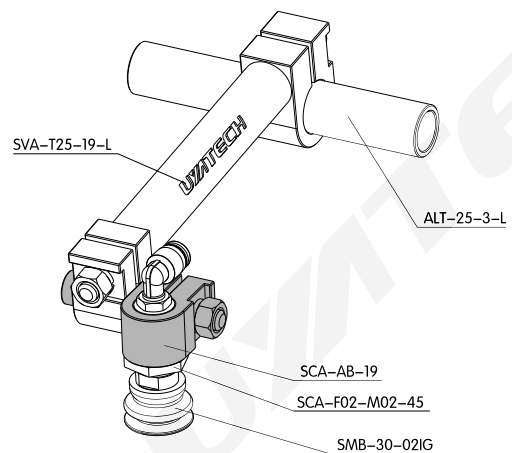
Extension Arm

SEA-25-19-Q-L

Suction Cup Adapter

SCA-F02

Application



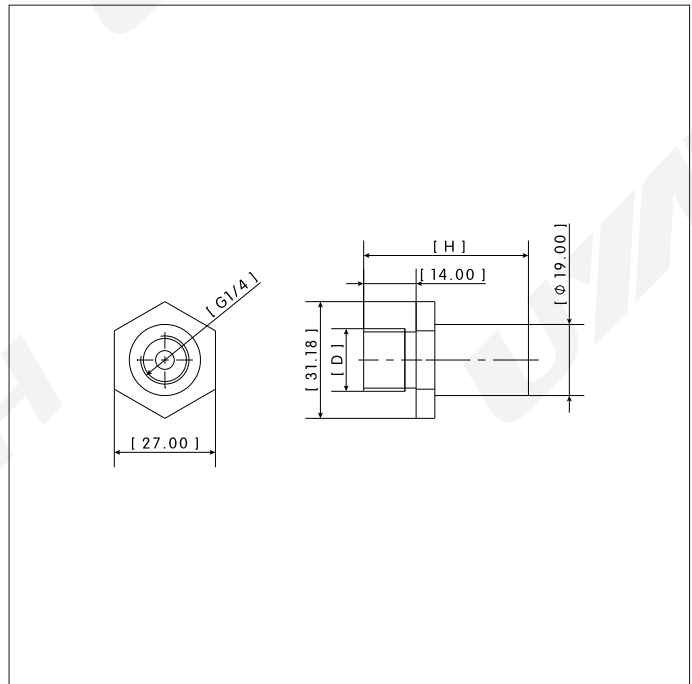
SCA-F02 | Suction Cup Adapter



Features

Material: Aluminum
 Operation Temperature: -20 C...80 C
 Surface Treatment : Anodized with sandblasting
 Function: Suction cup adapter

Dimensions



Ordering Information

Part No.	Ordering Code	Description	D	Weight
SCA-F02-M02-45	74232106	Suction cup adapter	G1/4	0.026
SCA-F02-M02-70	74232107	Suction cup adapter	G1/4	0.044
SCA-F02-M03-45	74232108	Suction cup adapter	G3/8	0.029
SCA-F02-M03-70	74232109	Suction cup adapter	G3/8	0.047

Relative Products

Swivel Arm

SVA-T

Bellow Cup

SMB

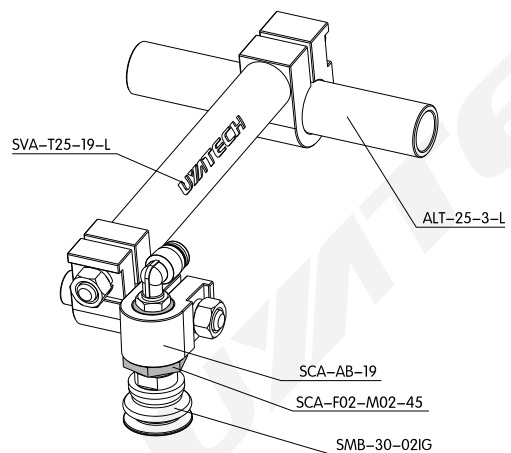
Extension Arm

SEA-25-19-Q-L

Adapter Clamp

SCA-AB-19

Application



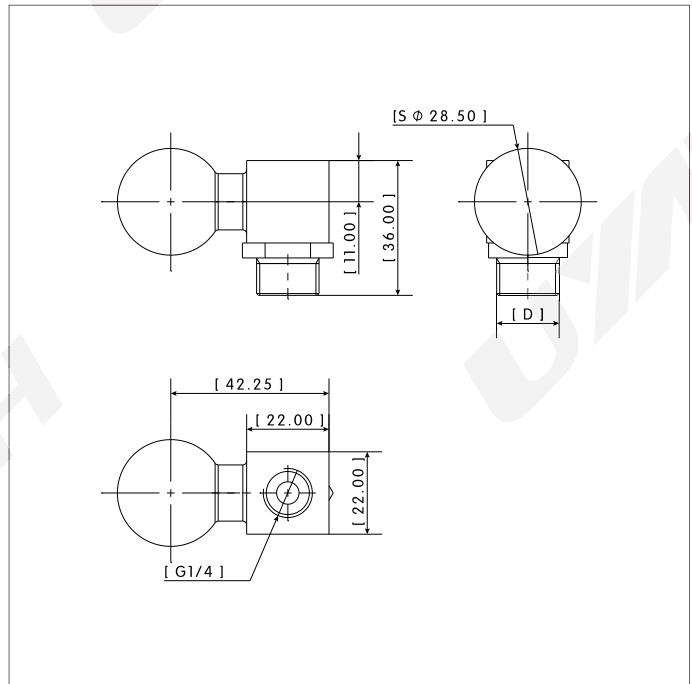
SCA-SC | Suction Cup Adapter



Features

Material: Aluminum, brass
 Operation Temperature: -20 C...80 C
 Surface Treatment : Anodized with sandblasting
 Function: Suction cup adapter

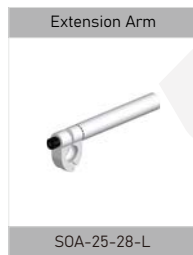
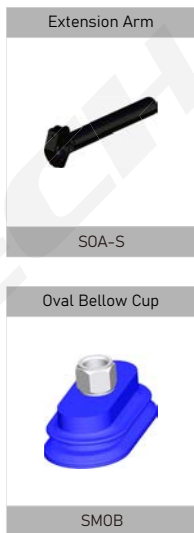
Dimensions



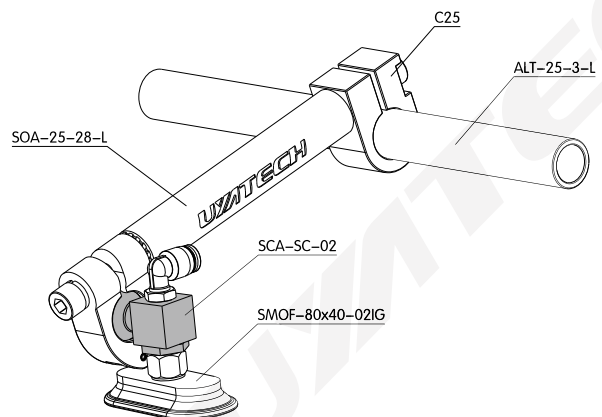
Ordering Information

Part No.	Ordering Code	Description	D	Weight
SCA-SC-02	74232110	Suction cup adapter	G1/4	0.09
SCA-SC-03	74232111	Suction cup adapter	G3/8	0.10

Relative Products



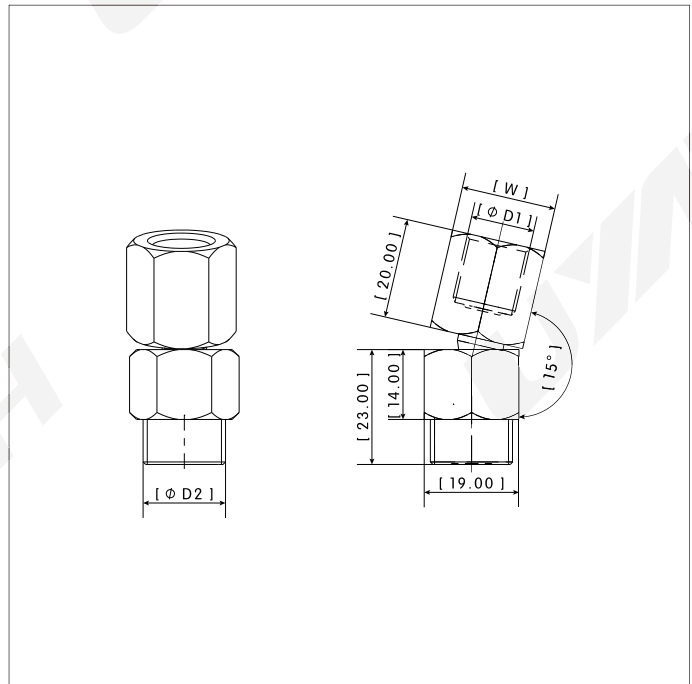
Application



EFA-SCO | Angle Joint



Dimensions



Features

- Material: Steel
- Operation Temperature: -20 C...80 C
- Surface Treatment : Zinc anodized
- Function: Suction cup adapter, with 15° adjustment

Ordering Information

Part No.	Ordering Code	Description	D1	D2	W	Weight
EFA-SCO-F02-M02	74236301	Angle joint	G1/4	G1/4	19	0.08
EFA-SCO-F03-M02	74236302	Angle joint	G1/4	G3/8	19	0.08
EFA-SCO-F02-M03	74236303	Angle joint	G1/4	G3/8	22	0.09
EFA-SCO-F03-M03	74236304	Angle joint	G3/8	G3/8	22	0.09

Relative Products

Application

