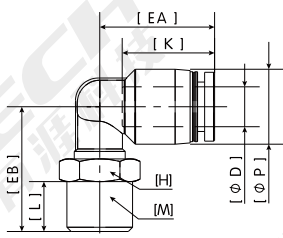
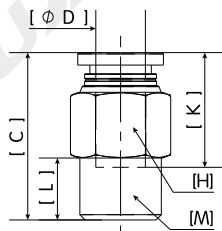


螺纹L形接头



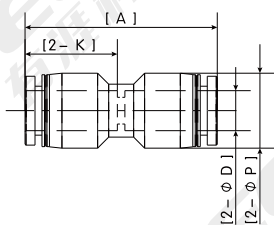
型号	D	M	P	L	K	EA	EB	H
TFP-L-6-M5	6	M5 × 0.8	12.5	3.5	17	20	17	8
TFP-L-6-01	6	R1/8	12.5	7.5	17	20	20.5	10
TFP-L-6-02	6	R1/4	12.5	10	17	20	24	14
TFP-L-8-01	8	R1/8	15	7.5	18.5	23	20.5	10
TFP-L-8-02	8	R1/4	15	10	18.5	23	25	14
TFP-L-8-03	8	R3/8	15	11	18.5	23	26.5	17
TFP-L-10-01	10	R1/8	18	7.5	21	25.5	25	17
TFP-L-10-02	10	R1/4	18	10	21	25.5	27	17
TFP-L-10-03	10	R3/8	18	11	21	25.5	28	17
TFP-L-12-01	12	R1/8	21	7.5	23	28.5	26.5	17
TFP-L-12-02	12	R1/4	21	10	23	28.5	28.5	17
TFP-L-12-03	12	R3/8	21	11	23	28.5	33	17

螺纹直通



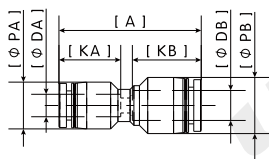
型号	D	M	L	C	K	H
TFP-P-6-M5	6	M5 × 0.8	3.5	22.5	16.5	12
TFP-P-6-01	6	R1/8	7.5	22	18.5	12
TFP-P-6-02	6	R1/4	10	24.5	18.5	14
TFP-P-8-01	8	R1/8	7.5	28	18.5	14
TFP-P-8-02	8	R1/4	10	27	18.5	14
TFP-P-8-03	8	R3/8	11	23.5	18.5	17
TFP-P-10-01	10	R1/8	7.5	30	21	17
TFP-P-10-02	10	R1/4	10	32.5	21	17
TFP-P-10-03	10	R3/8	11	28	21	17
TFP-P-12-01	12	R1/8	7.5	32.5	23	21
TFP-P-12-02	12	R1/4	10	35	23	21
TFP-P-12-03	12	R3/8	11	30.5	23	21

直通



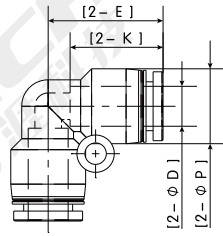
型号	D	P	K	A
TFP-H-6	6	12.5	16.5	34
TFP-H-8	8	15	18.5	38.5
TFP-H-10	10	18	21	43
TFP-H-12	12	21	23	47

变径直通



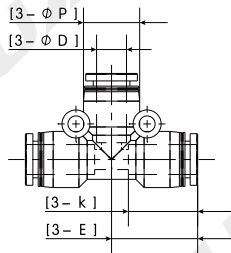
型号	DA	DB	PA	PB	KA	KB	A
TFP-H-6-8	6	8	12.5	15	16.5	18.5	38
TFP-H-6-10	6	10	15	18	16.5	21	42
TFP-H-8-10	8	10	15	18	18.5	21	42.5
TFP-H-8-12	8	12	18	21	18.5	23	46.5
TFP-H-10-12	10	12	18	21	21	23	47

L形接头



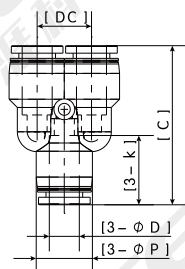
型号	D	P	K	E
TFP-L-6	6	12.5	16.5	20
TFP-L-8	8	15	18.5	23
TFP-L-10	10	18	21	26.5
TFP-L-12	12	21	23	30

三通



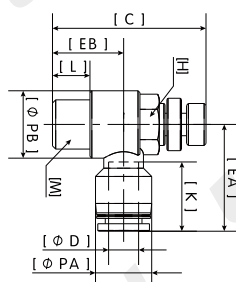
型号	D	P	K	E
TFP-T-6	6	12.5	16.5	20
TFP-T-8	8	15	18.5	23
TFP-T-10	10	18	21	26.5
TFP-T-12	12	21	23	30

Y形接头



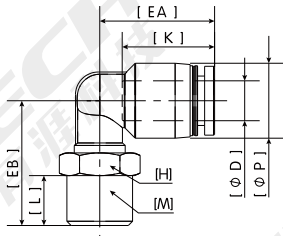
型号	D	P	C	K	DC
TFP-Y-6	6	12.5	37	16.5	12
TFP-Y-8	8	15	42.5	18.5	14.5
TFP-Y-10	10	18	48.5	21	18
TFP-Y-12	12	21	54.5	23	20.5

节流阀



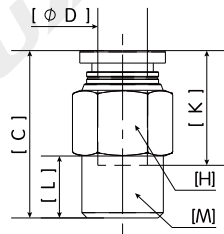
型号	D	M	PA	PB	L	C	K	EA	EB	H
TFP-LS-6-M5	6	M5 × 0.8	12.5	10	3.5	27.5	16.5	23.5	11.5	8
TFP-LS-6-01	6	R1/8	12.5	14	7.5	35	16.5	23	15.5	11
TFP-LS-6-02	6	R1/4	12.5	18	10	41	16.5	25	18	14
TFP-LS-8-01	8	R1/8	15	14	7.5	35	18.5	26.5	16.5	11
TFP-LS-8-02	8	R1/4	15	18	10	41	18.5	28.5	19	14
TFP-LS-8-03	8	R3/8	15	22.5	11	45.5	18.5	29.5	20	19
TFP-LS-10-02	10	R1/4	18	18	10	41	21	31	20.5	14
TFP-LS-10-03	10	R3/8	18	22.5	11	45.5	21	33	21.5	19
TFP-LS-12-02	12	R1/4	21	18	10	41	23	34	22.5	14
TFP-LS-12-03	12	R3/8	21	22.5	11	45.5	23	36	23.5	19

螺纹L形接头 (金属)



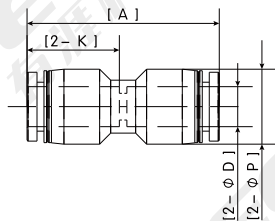
型号	D	M	P	L	K	EA	EB	H
TFB-L-6-M5	6	M5 × 0.8	12.5	3.5	17	20	17	8
TFB-L-6-01	6	R1/8	12.5	7.5	17	20	20.5	10
TFB-L-6-02	6	R1/4	12.5	10	17	20	24	14
TFB-L-8-01	8	R1/8	15	7.5	18.5	23	20.5	10
TFB-L-8-02	8	R1/4	15	10	18.5	23	25	14
TFB-L-8-03	8	R3/8	15	11	18.5	23	26.5	17
TFB-L-10-01	10	R1/8	18	7.5	21	25.5	25	17
TFB-L-10-02	10	R1/4	18	10	21	25.5	27	17
TFB-L-10-03	10	R3/8	18	11	21	25.5	28	17
TFB-L-12-01	12	R1/8	21	7.5	23	28.5	26.5	17
TFB-L-12-02	12	R1/4	21	10	23	28.5	28.5	17
TFB-L-12-03	12	R3/8	21	11	23	28.5	33	17

螺纹直通 (金属)



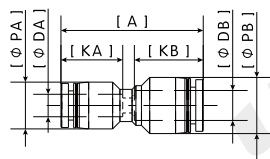
型号	D	M	L	C	K	H
TFB-P-6-M5	6	M5 × 0.8	3.5	22.5	16.5	12
TFB-P-6-01	6	R1/8	7.5	22	18.5	12
TFB-P-6-02	6	R1/4	10	24.5	18.5	14
TFB-P-8-01	8	R1/8	7.5	28	18.5	14
TFB-P-8-02	8	R1/4	10	27	18.5	14
TFB-P-8-03	8	R3/8	11	23.5	18.5	17
TFB-P-10-01	10	R1/8	7.5	30	21	17
TFB-P-10-02	10	R1/4	10	32.5	21	17
TFB-P-10-03	10	R3/8	11	28	21	17
TFB-P-12-01	12	R1/8	7.5	32.5	23	21
TFB-P-12-02	12	R1/4	10	35	23	21
TFB-P-12-03	12	R3/8	11	30.5	23	21

直通 (金属)



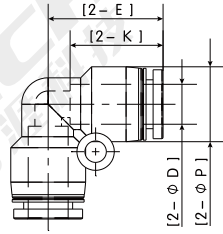
型号	D	P	K	A
TFB-H-6	6	12.5	16.5	34
TFB-H-8	8	15	18.5	38.5
TFB-H-10	10	18	21	43
TFB-H-12	12	21	23	47

变径直通 (金属)



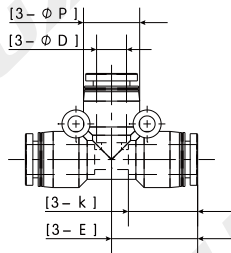
型号	DA	DB	PA	PB	KA	KB	A
TFB-H-6-8	6	8	12.5	15	16.5	18.5	38
TFB-H-6-10	6	10	15	18	16.5	21	42
TFB-H-8-10	8	10	15	18	18.5	21	42.5
TFB-H-8-12	8	12	18	21	18.5	23	46.5
TFB-H-10-12	10	12	18	21	21	23	47

L形接头 (金属)



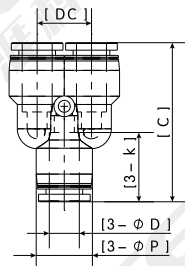
型号	D	P	K	E
TFB-L-6	6	12.5	16.5	20
TFB-L-8	8	15	18.5	23
TFB-L-10	10	18	21	26.5
TFB-L-12	12	21	23	30

三通 (金属)



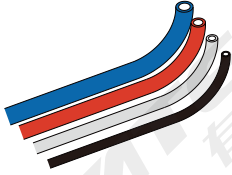
型号	D	P	K	E
TFB-T-6	6	12.5	16.5	20
TFB-T-8	8	15	18.5	23
TFB-T-10	10	18	21	26.5
TFB-T-12	12	21	23	30

Y形接头 (金属)



型号	D	P	C	K	DC
TFB-Y-6	6	12.5	37	16.5	12
TFB-Y-8	8	15	42.5	18.5	14.5
TFB-Y-10	10	18	48.5	21	18
TFB-Y-12	12	21	54.5	23	20.5

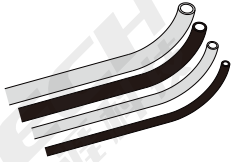
PU气管



材料: PU

型号	外径	内径	最小弯曲半径	颜色	L (m)
TPU-0604-BLU-L	6	4	15	蓝色	20/100
TPU-0805-BLU-L	8	5	20		
TPU-1065-BLU-L	10	6.5	27		
TPU-1208-BLU-L	12	8	35		
TPU-0604-R-L	6	4	15	红色	20/100
TPU-0805-R-L	8	5	20		
TPU-1065-R-L	10	6.5	27		
TPU-1208-R-L	12	8	35		
TPU-0604-C-L	6	4	15	透明色	20/100
TPU-0805-C-L	8	5	20		
TPU-1065-C-L	10	6.5	27		
TPU-1208-C-L	12	8	35		
TPU-0604-BLK-L	6	4	15	黑色	20/100
TPU-0805-BLK-L	8	5	20		
TPU-1065-BLK-L	10	6.5	27		
TPU-1208-BLK-L	12	8	35		

耐高温气管



材料: 氟树脂

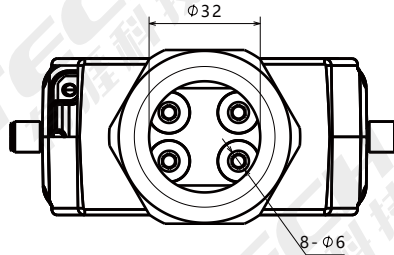
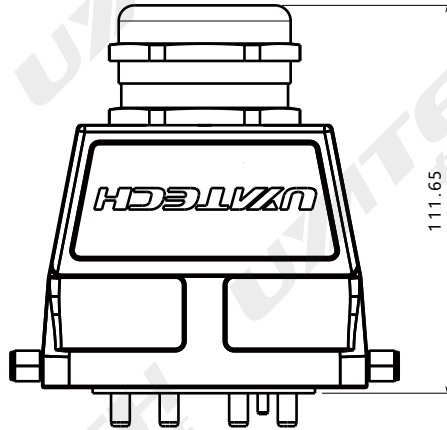
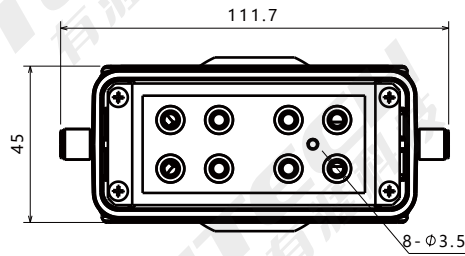
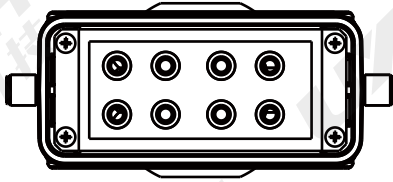
型号	外径	内径	最小弯曲半径	颜色	L (m)
TPF-0604-N-20	6	4	35	半透明	20
TPF-0806-N-20	8	6	60		
TPF-1075-N-20	10	7.5	95		
TPF-1209-N-20	12	9	100		
TPF-0604-BLK-20	6	4	35	黑色	100
TPF-0806-BLK-20	8	6	60		
TPF-1075-BLK-20	10	7.5	95		
TPF-1209-BLK-20	12	9	100		
TPF-0604-N-100	6	4	35	半透明	100
TPF-0806-N-100	8	6	60		
TPF-1075-N-100	10	7.5	95		
TPF-1209-N-100	12	9	100		

[AC-8A-HD-x] 气路耦合器



AC-8A-HD-P

AC-8A-HD-Z



[AC-8A-HS-x] 气路耦合器



AC-8A-HS-P

AC-8A-HS-Z

